

WAAS CH 77927 W12A	APP CRS 121°	Rwy Idg TDZE Apt Elev	8004 230 261
--	------------------------	-----------------------------	---

RNAV (GPS) RWY 12

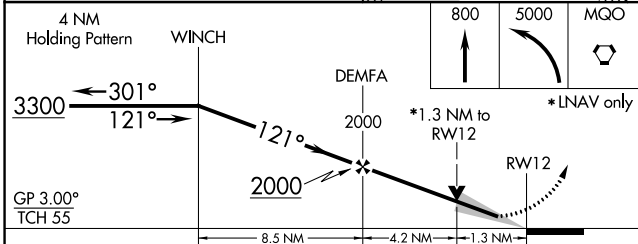
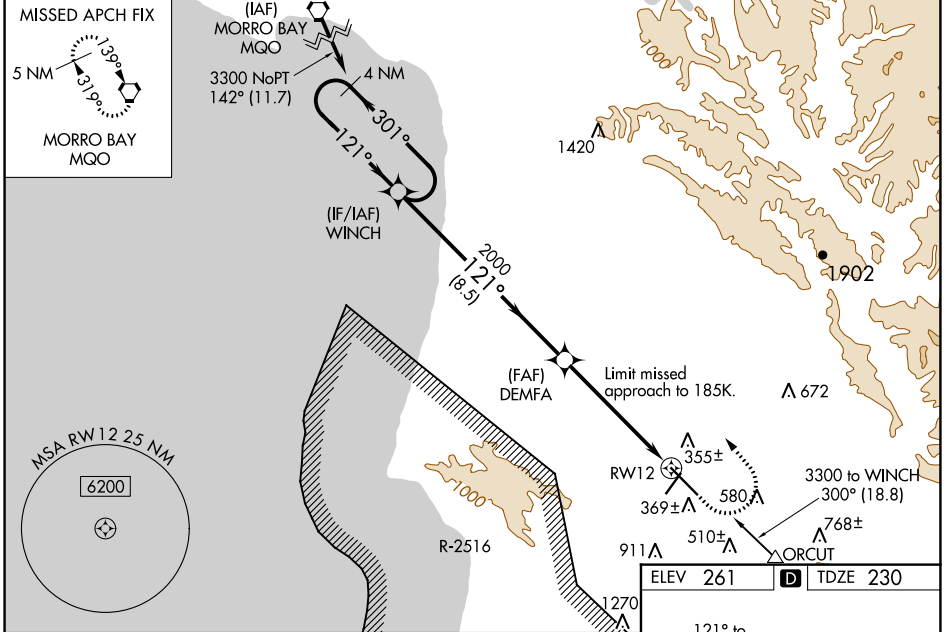
SANTA MARIA PUBLIC/CAPTAIN G ALLAN HANCOCK FIELD (SMX)

⚠ Circling Rwy 2 NA at night. Baro-VNAV NA when using Vandenberg altimeter setting. For uncompensated Baro-VNAV systems, LNAV/VNAV NA below -15°C (5°F) or above 42°C (107°F). DME/DME RNP-0.3 NA. VDP NA with Vandenberg altimeter setting. When local altimeter setting not received use Vandenberg altimeter setting and increase all DA 43 feet and all MDAs 60 feet. Increase LNAV/VNAV all Cats visibility to RVR 4000, and increase Circling Cat C visibility to 1¼ mile. For inop MALSR, increase LNAV Cat C/D visibility to 1½ mile. #RVR 1800 authorized with use of FD or AP or HUD to DA, NA when using Vandenberg altimeter setting.

MALSR
AS

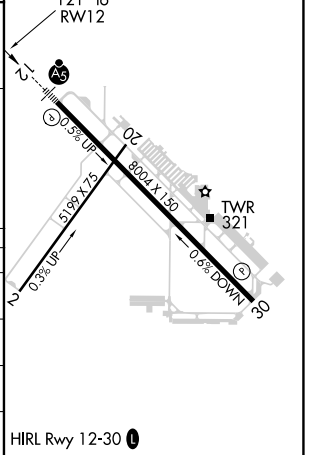
MISSED APPROACH:
Climb to 800 then climbing left turn to 5000 direct MQO VORTAC and hold.

ATIS 121.15	SANTA BARBARA APP CON* 124.15 327.8	SANTA MARIA TOWER* 118.3 (CTAF) 0 239.25	GND CON 121.9	UNICOM 122.95
-----------------------	---	--	-------------------------	-------------------------



ELEV 261	TDZE 230
----------	----------

CATEGORY	A	B	C	D
LPV DA#	430/24 200 (200-½)			
LNAV/VNAV DA	563/32 333 (400-⅝)			
LNAV MDA	680/24 450 (500-½)		680/50 450 (500-1)	
CIRCLING	860-1 599 (600-1)		860-1½ 1320-3 599 (600-1½) 1059 (1100-3)	



RNAV (GPS) RWY 12

SW-3, 25 FEB 2021 to 25 MAR 2021

SW-3, 25 FEB 2021 to 25 MAR 2021