

LOC/DME I-SMX 108.9 Chan 26	APP CRS 300°	Rwy Idg TDZE Apt Elev 261	N/A N/A N/A
--	------------------------	--	-------------------

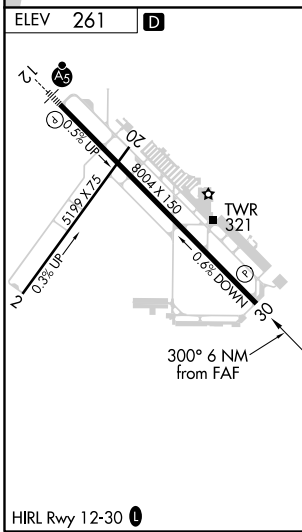
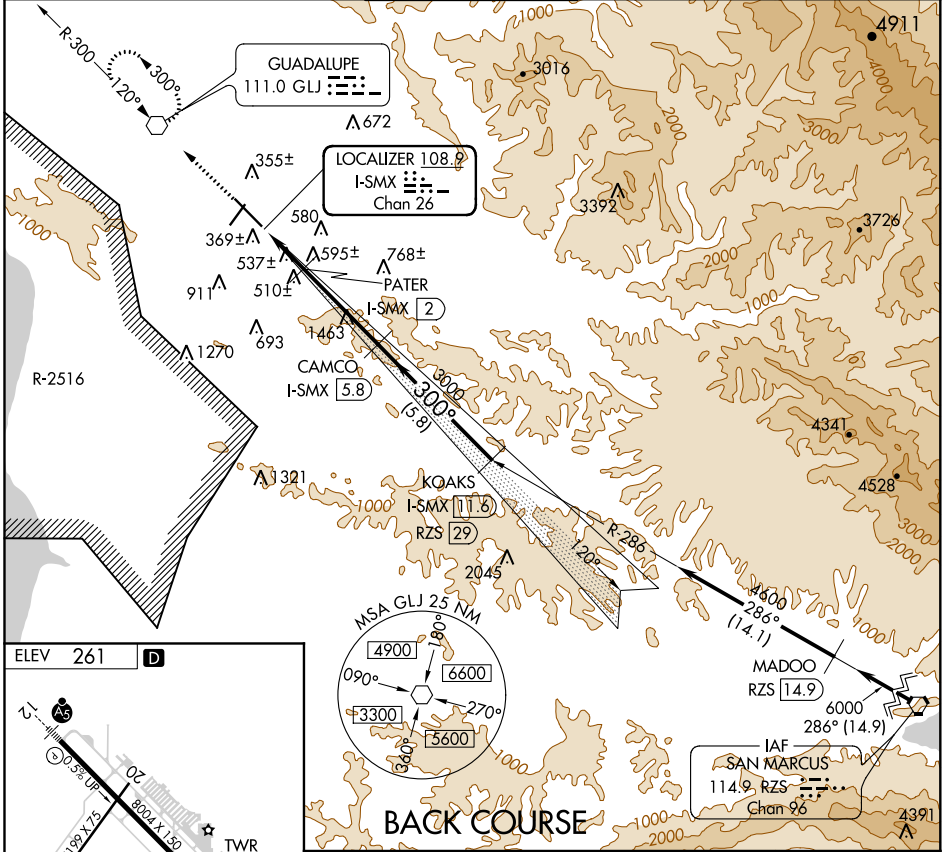
LOC/DME BC-A

SANTA MARIA PUBLIC/CAPTAIN G ALLAN HANCOCK FIELD (SMX)

⚠ Circling to Rwy 2 NA at night.
Helicopter visibility reduction below 1 SM NA.

MISSED APPROACH: Climb to 2100 direct GLJ VOR and hold.

ATIS 121.15	SANTA BARBARA APP CON* 124.15 327.8	SANTA MARIA TOWER* 118.3 (CTAF) 239.25	GND CON 121.9	UNICOM 122.95
-----------------------	---	---	-------------------------	-------------------------



2100	GLJ	Use I-SMX DME when on LOC course.	KOAKS I-SMX 11.6	
			RZS 29	
		PATER I-SMX 2		
		CAMCO I-SMX 5.8		
		I-SMX 0.5		
		1720	4600	
			Procedure Turn NA	
		Disregard glide slope indications		
CATEGORY	A	B	C	D
CIRCLING	1100-1 839 (900-1)	1100-1¼ 839 (900-1¼)	1100-2½ 839 (900-2½)	1320-3 1059 (1100-3)

SW-3, 25 FEB 2021 to 25 MAR 2021

SW-3, 25 FEB 2021 to 25 MAR 2021