

APP CRS <b>009°</b>	Rwy Idg TDZE Apt Elev	<b>N/A</b> <b>N/A</b> <b>4044</b>
------------------------	-----------------------------	---

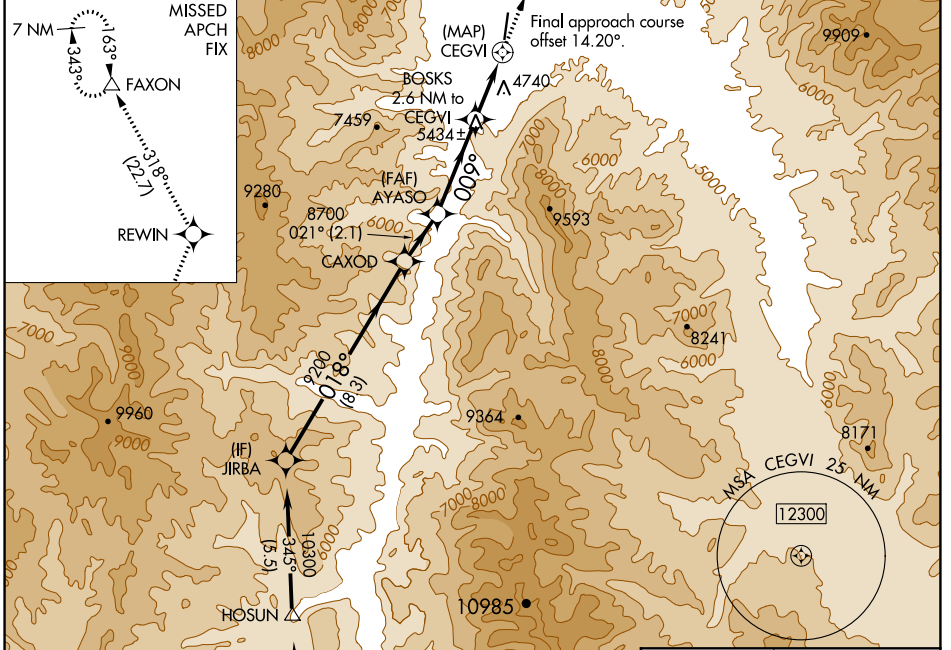
# RNAV (GPS)-D

LEMHI COUNTY (SMN)

**NA** Circling Rwy 35 NA at night.  
DME/DME RNP-0.3 NA.  
Circling NA for Cat C east of Rwy 17-35.

**MISSED APPROACH:** Climb to 12000 direct REWIN and on track 318° to FAXON and hold, continue climb-in-hold to 12000.

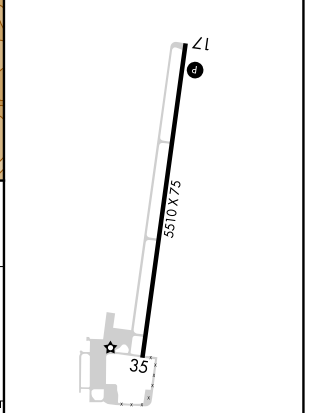
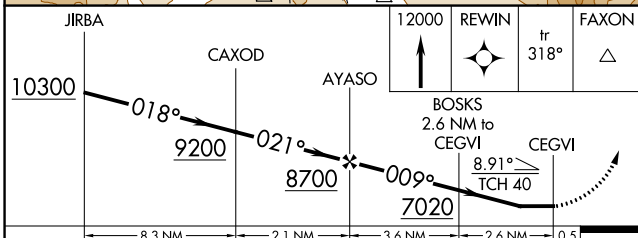
AWOS-3PT <b>135.075</b>	SALT LAKE CENTER <b>132.4 338.3</b>	UNICOM <b>122.8 (CTAF) 0</b>
----------------------------	--	---------------------------------



Procedure NA for arrivals at YOWLS on V298 westbound.

Procedure NA for arrivals at WABUD on V269 southeast bound.

ELEV 4044



CATEGORY	A	B	C	D
<b>CIRCLING</b>	6000-1¼ 1956 (2000-1¼)	6000-1½ 1956 (2000-1½)	6220-3 2176 (2200-3)	NA

REIL Rwy 17 and 35 0  
MIRL Rwy 17-35 0

NW-1, 25 FEB 2021 to 25 MAR 2021

NW-1, 25 FEB 2021 to 25 MAR 2021