

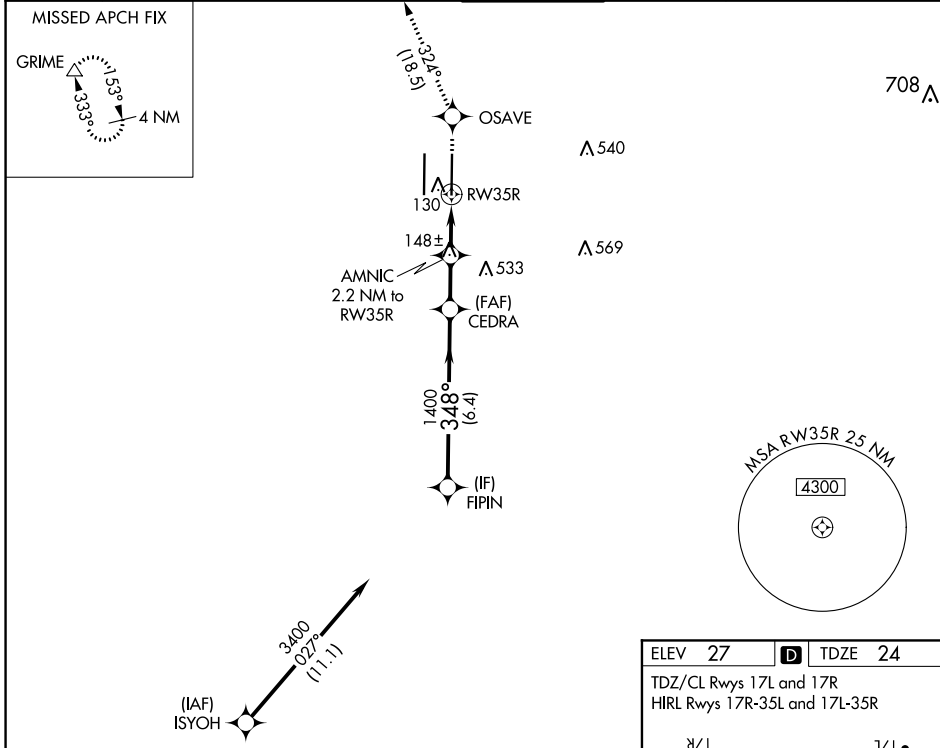
APP CRS	Rwy Idg	<b>8605</b>
<b>348°</b>	TDZE	<b>24</b>
	Apt Elev	<b>27</b>

# RNAV (GPS) Y RWY 35R

SACRAMENTO INTL (SMF)

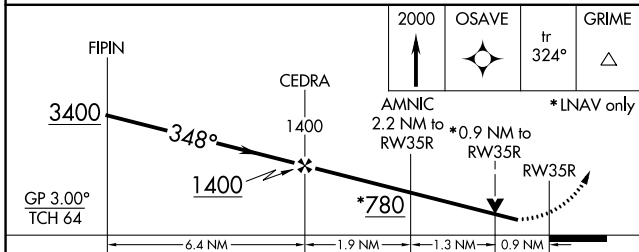
RNP APCH.	MISSED APPROACH: Climb to 2000 direct OSAVE and track 324° to GRIME and hold.
<p>▼ Circling NA west of Rwy 17L-35R. Rwy 35R helicopter visibility reduction below 3/4 SM NA.</p> <p>▲ For uncompensated Baro-VNAV systems, LNAV/VNAV NA below -4°C or above 54°C.</p>	

D-ATIS	NORCAL APP CON	CAPITOL TOWER	GND CON	CLNC DEL	CPDLC
<b>126.75</b>	<b>125.4 259.1 (W-NE) 125.25 257.9 (SW) 127.4 317.5 (E-SE)</b>	<b>125.7 256.7</b>	<b>121.7 256.7</b>	<b>121.1 256.7</b>	



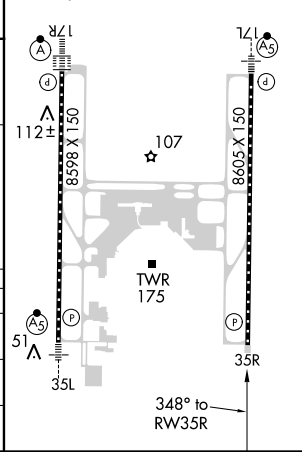
SW-2, 25 FEB 2021 to 25 MAR 2021

SW-2, 25 FEB 2021 to 25 MAR 2021



ELEV	<b>27</b>	<b>D</b>	TDZE	<b>24</b>
------	-----------	----------	------	-----------

TDZ/CL Rwsy 17L and 17R  
HIRL Rwsy 17R-35L and 17L-35R



CATEGORY	A	B	C	D
LNAV/VNAV DA		316-7/8	292 (300-7/8)	
LNAV MDA		380-1	356 (400-1)	
<b>C</b> CIRCLING	400-1 373 (400-1)	480-1 453 (500-1)	480-1 1/2 453 (500-1 1/2)	840-2 3/4 813 (900-2 3/4)