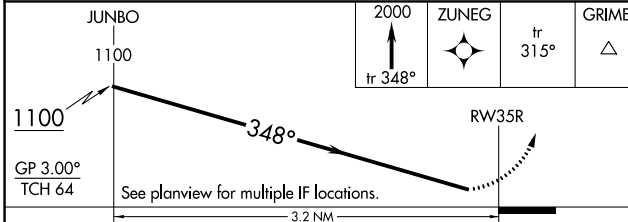
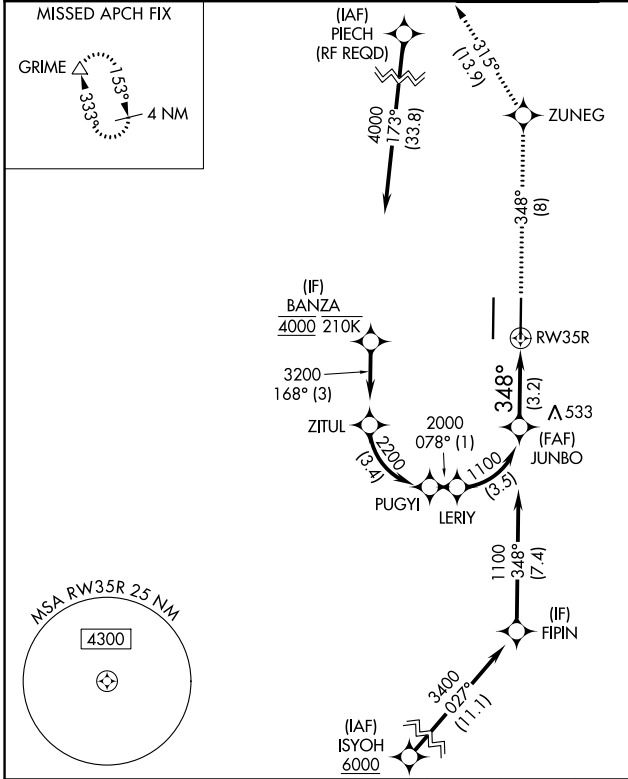


APP CRS <b>348°</b>	Rwy Idg TDZE Apt Elev	<b>8605</b> <b>24</b> <b>27</b>
------------------------	-----------------------------	---------------------------------------

# RNAV (RNP) Z RWY 35R

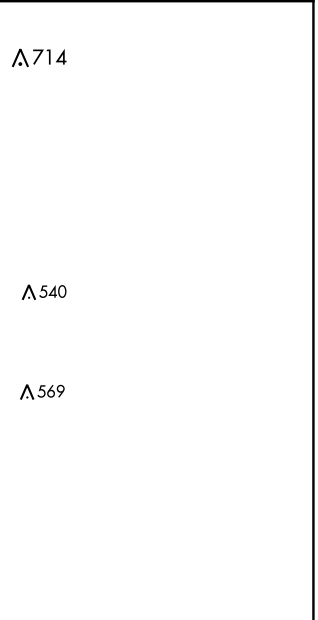
SACRAMENTO INTL (SMF)

RNP AR APCH.		MISSED APPROACH: Climb to 2000 on track 348° to ZUNEG and on track 315° to GRIME and hold.			
▼ For uncompensated Baro-VNAV systems, procedure NA below -4°C or above 54°C.					
D-ATIS <b>126.75</b>	NORCAL APP CON <b>125.4 259.1 (W-NE) 125.25 257.9 (SW) 127.4 317.5 (E-SE)</b>	CAPITOL TOWER <b>125.7 256.7</b>	GND CON <b>121.7 256.7</b>	CLNC DEL <b>121.1 256.7</b>	CPDLC



CATEGORY	A	B	C	D
RNP 0.10 DA		319-7/8	295 (300-7/8)	
RNP 0.30 DA		385-1 1/8	361 (400-1 1/8)	

**AUTHORIZATION REQUIRED**



SW-2, 25 FEB 2021 to 25 MAR 2021

SW-2, 25 FEB 2021 to 25 MAR 2021