

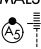
LOC/DME I-HUX 111.1 Chan 48	APP CRS 348°	Rwy Idg 8598 TDZE 24 Apt Elev 27
---	------------------------	---

ILS or LOC RWY 35L

SACRAMENTO INTL (SMF)

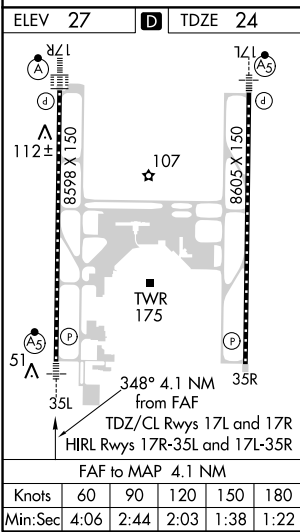
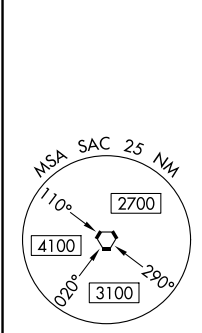
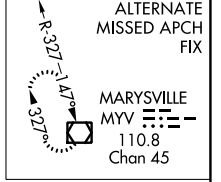
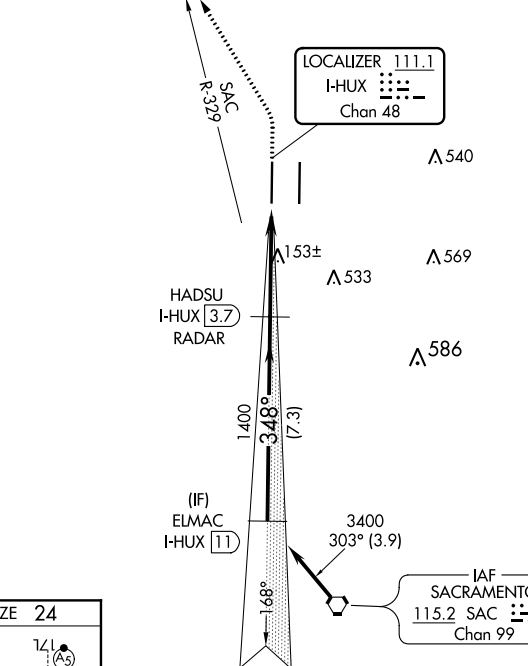
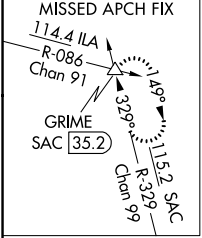
DME required for procedure entry. RADAR or DME required for LOC only.

▼ Circling NA east of Rwy 17R-35L. Autopilot coupled approach NA below 312 MSL. For inop ALS, increase S-LOC 35L Cats C and D visibility to RVR 6000.
* RVR 1800 authorized with the use of FD or AP or HUD to DA.

MALSR


MISSED APPROACH: Climb to 500 then climbing left turn to 2000 on heading 320° and SAC VORTAC R-329 to GRIME INT/SAC 35.2 DME and hold.

D-ATIS 126.75	NORCAL APP CON 125.4 259.1 (W-NE) 125.25 257.9 (SW) 127.4 317.5 (E-SE)	CAPITOL TOWER 125.7 256.7	GND CON 121.7 256.7	CLNC DEL 121.1 256.7	CPDLC
-------------------------	---	--	--------------------------------------	---------------------------------------	-------



Procedure NA for arrivals on SAC VORTAC airway radials 257 CW 329.

VGS and ILS glidepath not coincident (VGS Angle 3.00/TCH 76).		500	2000	SAC R-329	GRIME Δ
ELMAC I-HUX 11		HADSU I-HUX 3.7 RADAR		I-HUX DME ANTENNA I-HUX 0.5	
3400		348°		1400	
GS 3.00° TCH 59		7.3 NM		4.1 NM	
CATEGORY	A	B	C	D	
S-ILS 35L*	224/24 200 (200-1/2)				
S-LOC 35L	420/24	396 (400-1/2)	420/35 396 (400-5/8)	420/40 396 (400-3/4)	
C CIRCLING	440-1 413 (500-1)	480-1 453 (500-1)	480-1/2 453 (500-1/2)	580-2 553 (600-2)	

SW-2, 25 FEB 2021 to 25 MAR 2021

SW-2, 25 FEB 2021 to 25 MAR 2021