

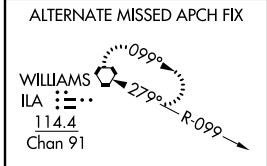
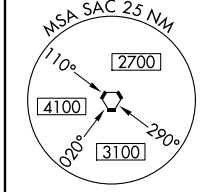
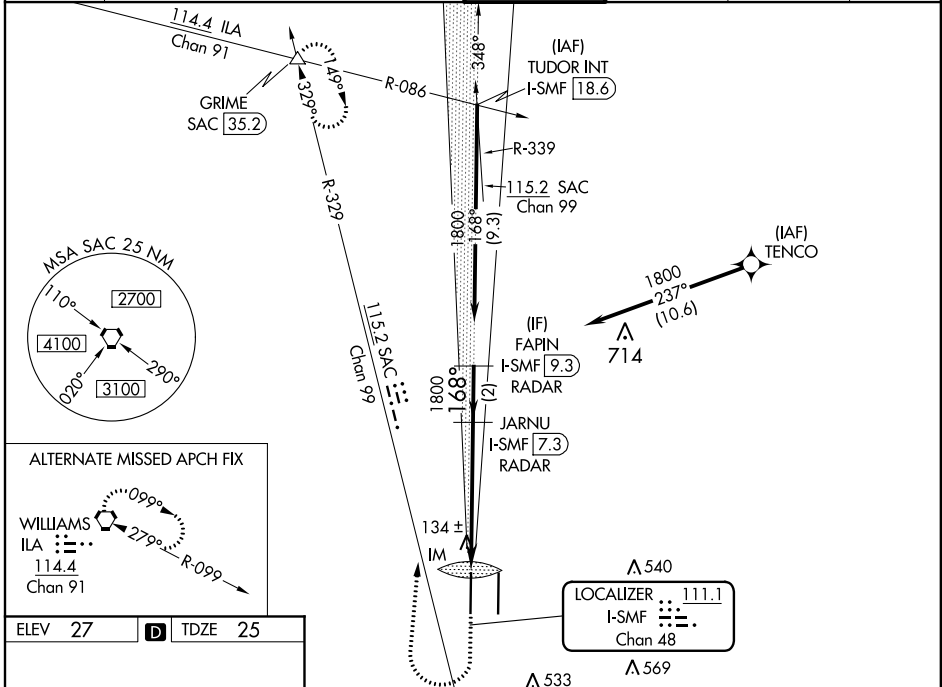
LOC/DME I-SMF 111.1 Chan 48	APP CRS 168°	Rwy Idg 8598 TDZE 25 Apt Elev 27
--	------------------------	---

ILS RWY 17R (CAT II & III)

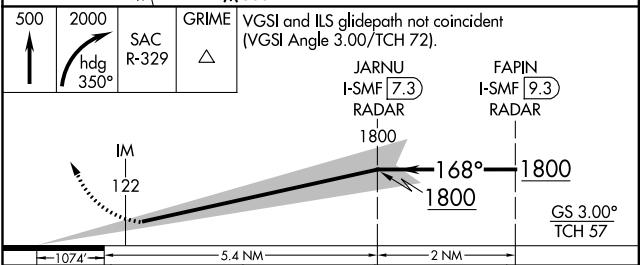
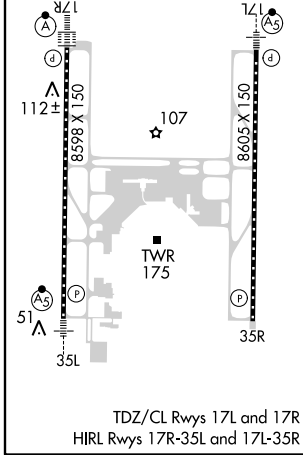
SACRAMENTO INTL (SMF)

RNAV 1-GPS or RADAR required for procedure entry. From TENCO: RNAV 1-GPS required. DME or RADAR required.	ALSIF-2 	MISSED APPROACH: Climb to 500 then climbing right turn to 2000 on heading 350° and SAC VORTAC R-329 to GRIME INT/SAC 35.2 DME and hold.
Simultaneous approach authorized.		

D-ATIS 126.75	NORCAL APP CON 125.4 259.1 (W-NE) 125.25 257.9 (SW) 127.4 317.5 (E-SE)	CAPITOL TOWER 125.7 256.7	GND CON 121.7 256.7	CLNC DEL 121.1 256.7	CPDLC
-------------------------	--	-------------------------------------	-------------------------------	--------------------------------	-------



ELEV 27	D	TDZE 25
---------	----------	---------



CATEGORY	A	B	C	D
S-ILS 17R	CAT II RA 103/12 100 DA 125			
S-ILS 17R	CAT III RVR 06			

CATEGORY II & III ILS - SPECIAL AIRCREW & AIRCRAFT CERTIFICATION REQUIRED

SW-2, 25 FEB 2021 to 25 MAR 2021

SW-2, 25 FEB 2021 to 25 MAR 2021