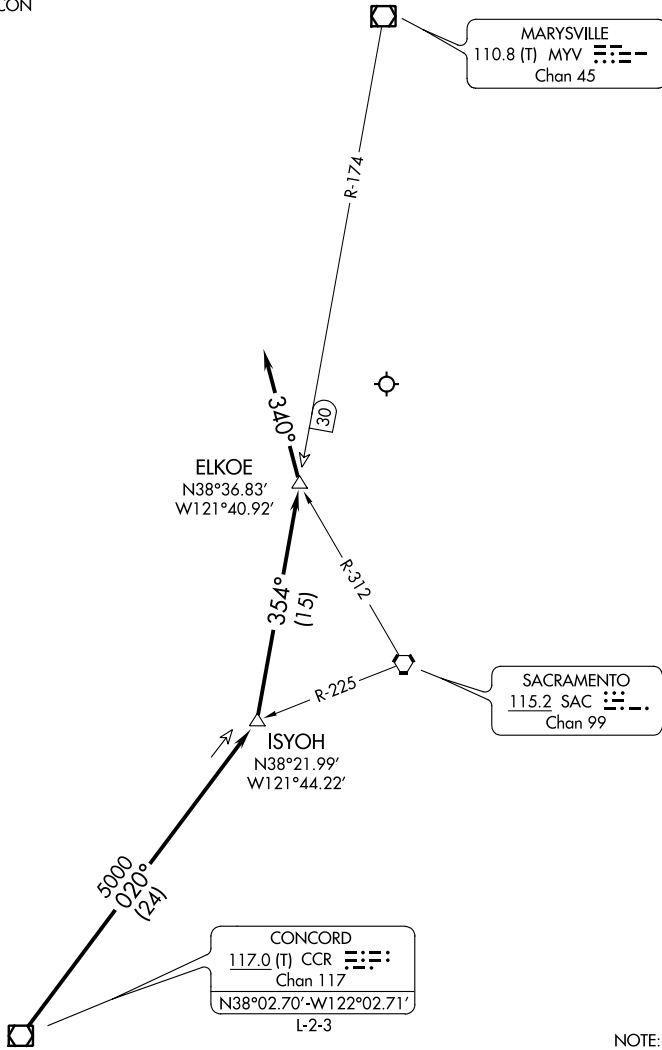


NORCAL APP CON
125.25 257.9



NOTE: Chart not to scale.

ARRIVAL ROUTE DESCRIPTION

From over CCR VOR/DME via CCR R-020 to ISYOH INT, then via MYV R-174 to ELKOE INT, then on heading 340°. Expect RADAR vectors to final approach course.

SW-2, 25 FEB 2021 to 25 MAR 2021

SW-2, 25 FEB 2021 to 25 MAR 2021