

WAAS CH 77638 W31A	APP CRS 313°	Rwy Idg 2821 TDZE 836 Apt Elev 836
--	------------------------	---

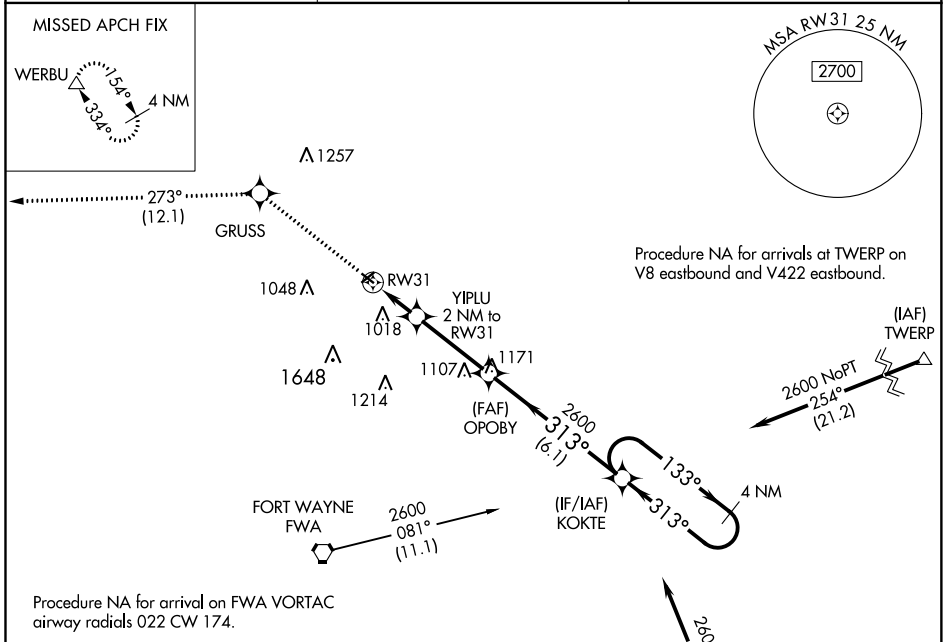
RNAV (GPS) RWY 31

SMITH FIELD (SMD)

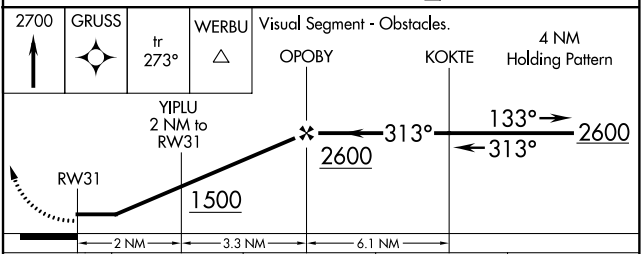
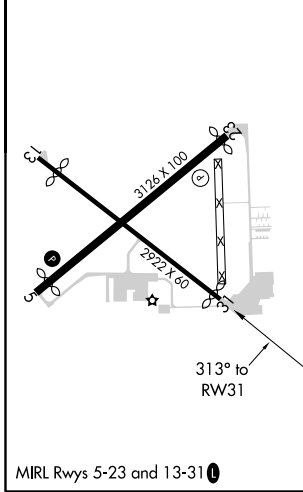
⚠ Rwy 31 helicopter visibility reduction below 1 SM NA. DME/DME RNP-0.3 NA.
⚠ NA Procedure NA at night. When local altimeter setting not received, use Fort Wayne Intl altimeter setting and increase all MDA 40 feet, LP Cat C visibility 1/4 SM and LNAV Cat C visibility 1/8 SM.
⚠ -22°C

MISSED APPROACH: Climb to 2700 direct GRUSS and on track 273° to WERBU and hold.

AWOS-3 124.55	FORT WAYNE APP CON 127.2 284.6	UNICOM 122.8 (CTAF) 0
-------------------------	--	---------------------------------



ELEV 836	TDZE 836
----------	----------



CATEGORY	A	B	C	D
LP MDA	1240-1	404 (500-1)	1240-1 1/8 404 (500-1 1/8)	NA
LNAV MDA	1260-1	424 (500-1)	1260-1 1/4 424 (500-1 1/4)	NA
C CIRCLING	1400-1	564 (600-1)	1940-3 1104 (1200-3)	NA

EC-2, 25 FEB 2021 to 25 MAR 2021

EC-2, 25 FEB 2021 to 25 MAR 2021