

VOR or TACAN RWY 22L

VORTAC SLI 115.7 Chan 104	APCH CRS 214°	Rwy ldg TDZE Arprt Elev 8001 35 35
---	-------------------------	---

AL-953 [USA]

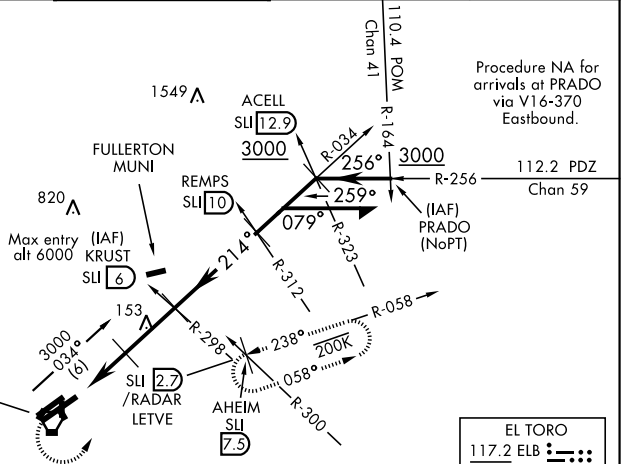
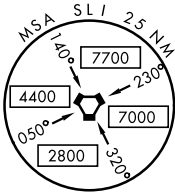
LOS ALAMITOS AAF (KSLI)

* When ALS inop, increase vis CAT D 1/4 mile.
 ** Circling not authorized N of Rwy 4L-22R.

 MISSED APPROACH: Climb to 1800, then climbing left turn to 3000 via SLI VORTAC R-058 to AHEIM INT and hold.

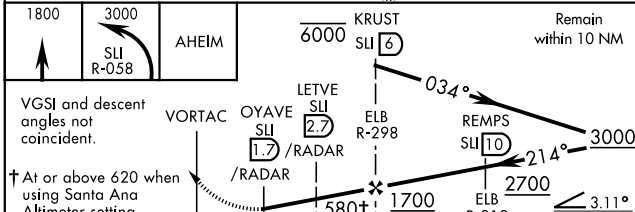
ATIS ★ 118.875 379.975	SOCAL APP CON 125.35 316.125	LOS ALAMITOS TOWER ★ 123.85 251.15	GND CON 126.95 257.95	ASR/ PAR
----------------------------------	--	--	---------------------------------	-------------

When Los Alamitos altimeter setting not available, use Santa Ana altimeter setting.



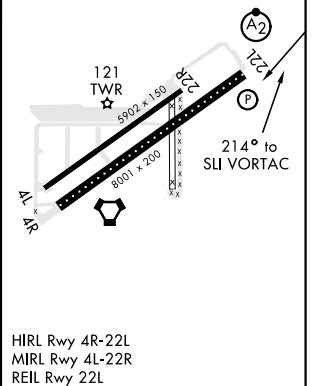
SEAL BEACH
 115.7 SLI
 Chan 104

EL TORO
 117.2 ELB
 Chan 119



ELEV 35	TDZE 35
---------	---------

CATEGORY	A	B	C	D
S-22L *	440-3/4	405 (500-3/4)	440-1 405 (500-1)	440-1 1/4 405 (500-1 1/4)
CIRCLING **	440-1 405 (500-1)	500-1 465 (500-1)	500-1 1/2 465 (500-1 1/2)	600-2 565 (600-2)
WITHOUT DME or RADAR				
S-22L	580-3/4	545 (600-3/4)	580-1 1/4 545 (600-1 1/4)	580-1 1/2 545 (600-1 1/2)
CIRCLING **	580-1	545 (600-1)	580-1 1/2 545 (600-1 1/2)	600-2 565 (600-2)
SANTA ANA ALTIMETER SETTING MINIMUMS				
S-22L *	480-3/4	445 (500-3/4)	480-1 445 (500-1)	480-1 1/2 445 (500-1 1/2)
CIRCLING **	480-1 445 (500-1)	540-1 505 (600-1)	540-1 1/2 505 (600-1 1/2)	640-2 605 (700-2)
SANTA ANA ALTIMETER SETTING WITHOUT DME or RADAR				
S-22L	620-3/4	585 (600-3/4)	620-1 1/4 585 (600-1 1/4)	620-1 3/4 585 (600-1 3/4)
CIRCLING **	620-1	585 (600-1)	620-1 1/2 585 (600-1 1/2)	640-2 605 (700-2)



HIRL Rwy 4R-22L
 MIRL Rwy 4L-22R
 REIL Rwy 22L

FAF to MAP 4.3 NM					
Knots	60	90	120	150	180
Min:Sec	4:18	2:52	2:09	1:43	1:26

VOR or TACAN RWY 22L

SW-3, 25 FEB 2021 to 25 MAR 2021

SW-3, 25 FEB 2021 to 25 MAR 2021