

LOC/DME I-UAT 111.9 Chan 56	APP CRS 164°	Rwy ldg 12000 TDZE 4223 Apt Elev 4227
---	------------------------	--

ILS RWY 16R (SA CAT I)

SALT LAKE CITY INTL (SLC)

DME or RADAR required.

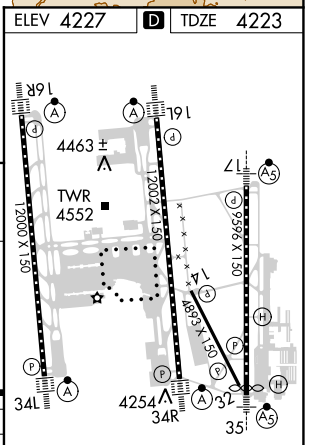
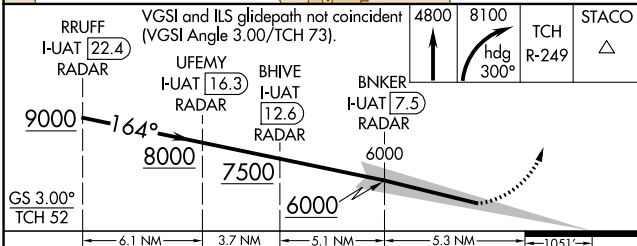
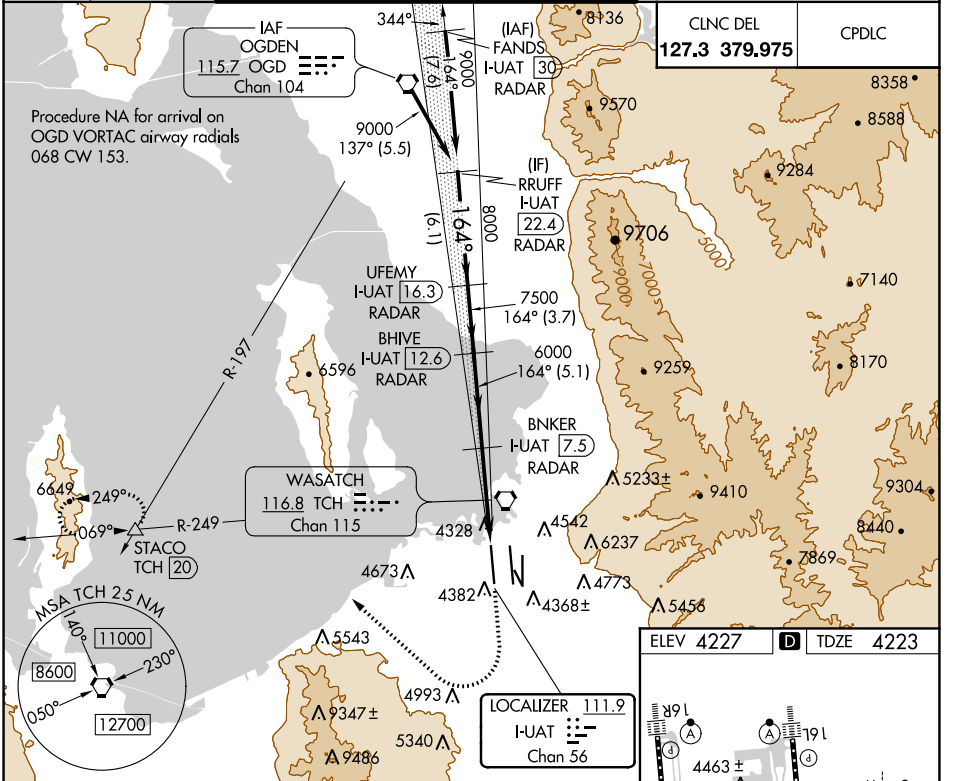
Simultaneous approach authorized.
Requires specific OPSPEC, MSPEC, or LOA approval and use of HUD to DH.

ALSF-2

MISSED APPROACH: Climb to 4800 then climbing right turn to 8100 on heading 300° and on TCH VORTAC R-249 to STACO INT/TCH 20 DME and hold.

D-ATIS 124.75 125.625	SALT LAKE CITY APP CON 125.7 284.6	SALT LAKE CITY TOWER 119.05 257.8 (Rwy 16L-34R)	118.3 257.8 (Rwys 14-32, 17-35)	132.65 336.4 (Rwy 16R-34L)	GND CON 121.9 348.6 (Rwys 14-32, 17-35)	123.775 348.6 (Rwys 16L-34R, 16R-34L)
---	--	--	---	--------------------------------------	--	---

CLNC DEL 127.3 379.975	CPDLC
----------------------------------	-------



CATEGORY	A	B	C	D
S-ILS 16R	RA 157/14 150 DA 4373			

HIRL all Rwys
TDZ/CL Rwys 16L, 16R, 17, 34L, 34R, and 35

SW-4, 25 FEB 2021 to 25 MAR 2021

SW-4, 25 FEB 2021 to 25 MAR 2021