

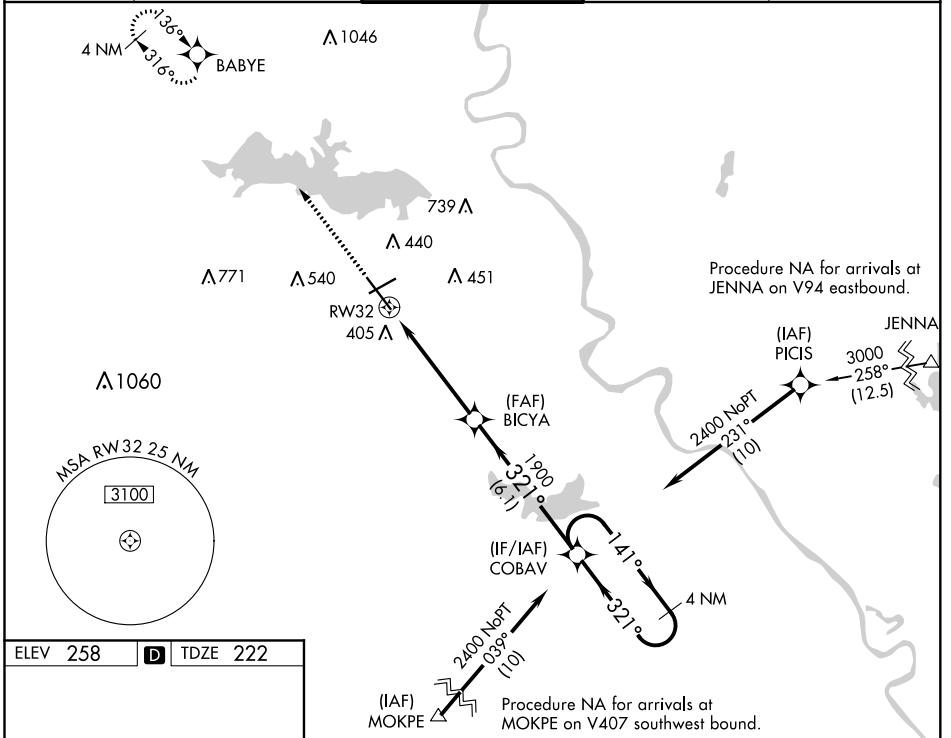
WAAS CH 77913 W32A	APP CRS 321°	Rwy Idg TDZE Apt Elev	7976 222 258
--	------------------------	-----------------------------	---

RNAV (GPS) RWY 32

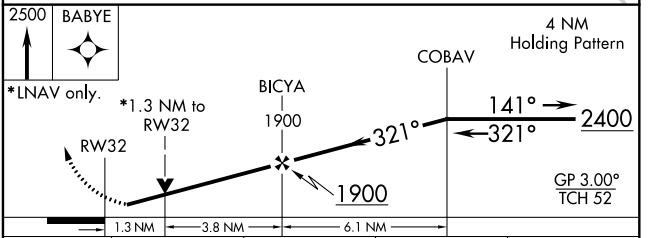
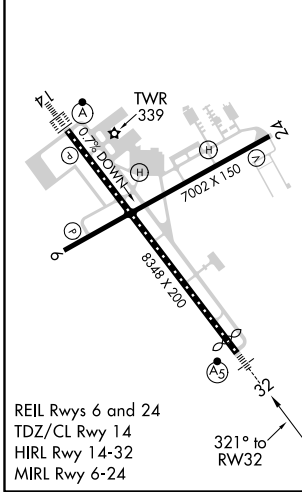
SHREVEPORT RGNL (SHV)

RNP APCH		MALSR		MISSED APPROACH: Climb to 2500 direct BABYE and hold.	
<p>▼ Rwy 32, helicopter visibility reduction below RVR 4000 NA. For uncompensated Baro-VNAV systems, LNAV/VNAV NA below -6°C or above 54°C. Inop table does not apply to LPV all Cats. For inop ALS, increase LNAV Cat A and B visibility to RVR 5500.</p>					

ATIS 128.45	SHREVEPORT APP CON 119.9 335.55	SHREVEPORT TOWER 121.4 236.775	GND CON 121.175 236.775	CLNC DEL 124.65
-----------------------	---	--	-----------------------------------	---------------------------



ELEV 258	D	TDZE 222
----------	----------	----------



CATEGORY	A	B	C	D
LPV DA		422/40	200 (200-¾)	
LNAV/VNAV DA		623/45	401 (400-¾)	
LNAV MDA	680/40	458 (500-¾)	680/45	458 (500-¾)
C CIRCLING	760-1	502 (600-1)	980-2 722 (800-2)	1100-2¾ 842 (900-2¾)

SC-4, 25 FEB 2021 to 25 MAR 2021

SC-4, 25 FEB 2021 to 25 MAR 2021