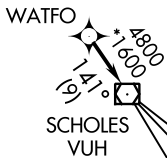
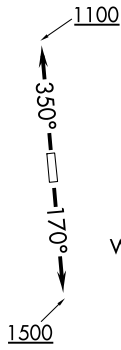


# WATFO FIVE DEPARTURE (RNAV)

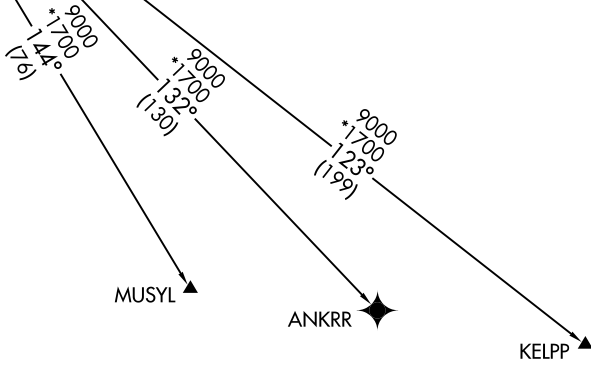
**TOP ALTITUDE:  
ASSIGNED BY ATC**

ATIS★  
 118.125  
 CLNC DEL  
 121.4  
 CLNC DEL (when twr closed)  
 119.25  
 GND CON  
 121.4  
 SUGARLAND TOWER★  
 118.65 (CTAF)  
 HOUSTON DEP CON  
 123.8 257.7



TAKEOFF MINIMUMS:  
 Rwy 17, 35: Standard with minimum  
 climb of 500' per NM to 600.

NOTE: GPS required.  
 NOTE: RADAR required.  
 NOTE: RNAV 1.



NOTE: Chart not to scale.

## DEPARTURE ROUTE DESCRIPTION

TAKEOFF RWY 17: Climb on heading 170° to 1500, for RADAR vectors to WATFO, thence. . . .

TAKEOFF RWY 35: Climb on heading 350° to 1100, for RADAR vectors to WATFO, thence. . . .

. . . on track 141° to VUH VOR/DME, then on (transition). Maintain ATC assigned altitude. Expect filed altitude 10 minutes after departure.

- ANKRR TRANSITION (WATFO5.ANKRR)
- KELPP TRANSITION (WATFO5.KELPP)
- MUSYL TRANSITION (WATFO5.MUSYL)

SC-5, 25 FEB 2021 to 25 MAR 2021

SC-5, 25 FEB 2021 to 25 MAR 2021