

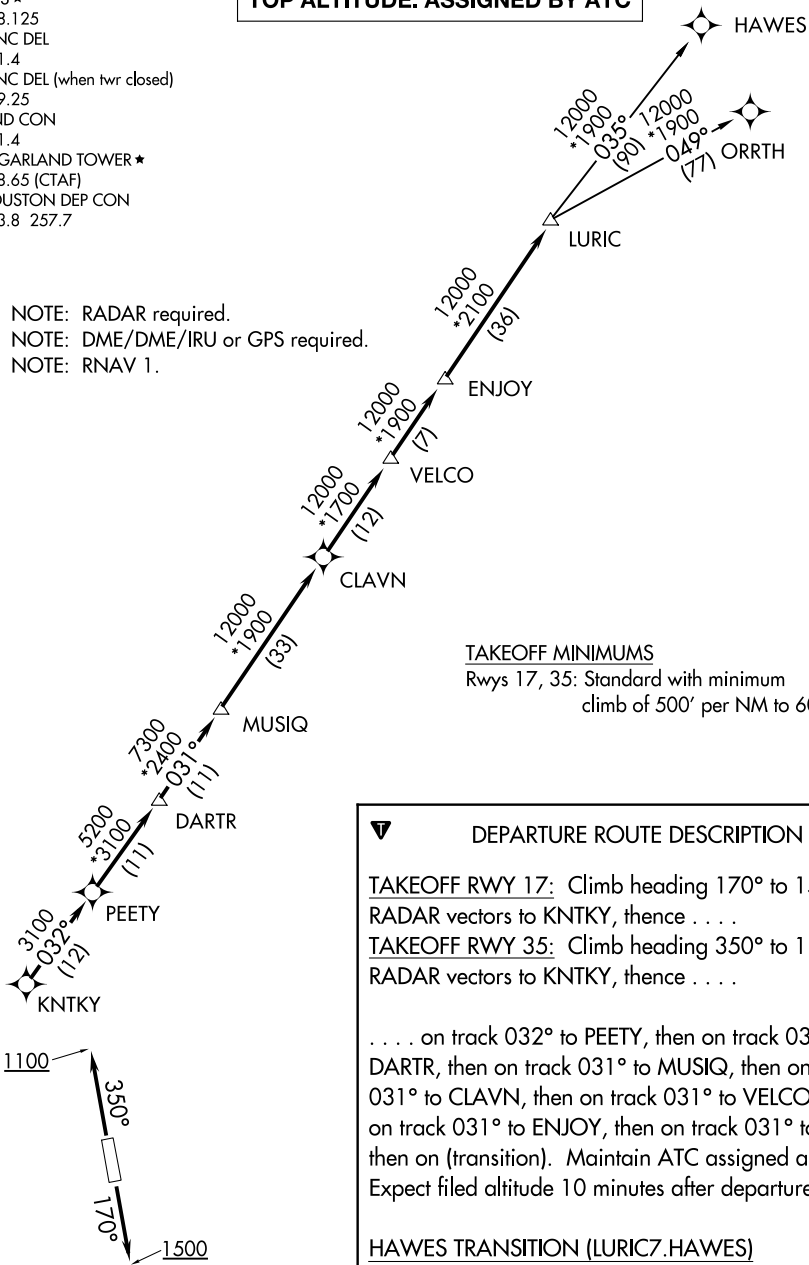
LURIC SEVEN DEPARTURE (RNAV)

HOUSTON, TEXAS

ATIS ★
 118.125
 CLNC DEL
 121.4
 CLNC DEL (when twr closed)
 119.25
 GND CON
 121.4
 SUGARLAND TOWER ★
 118.65 (CTAF)
 HOUSTON DEP CON
 123.8 257.7

TOP ALTITUDE: ASSIGNED BY ATC

NOTE: RADAR required.
 NOTE: DME/DME/IRU or GPS required.
 NOTE: RNAV 1.



TAKEOFF MINIMUMS

Rwys 17, 35: Standard with minimum
 climb of 500' per NM to 600.

DEPARTURE ROUTE DESCRIPTION

TAKEOFF RWY 17: Climb heading 170° to 1500 for RADAR vectors to KNTKY, thence

TAKEOFF RWY 35: Climb heading 350° to 1100 for RADAR vectors to KNTKY, thence

. . . . on track 032° to PEETY, then on track 032° to DARTR, then on track 031° to MUSIQ, then on track 031° to CLAVN, then on track 031° to VELCO, then on track 031° to ENJOY, then on track 031° to LURIC, then on (transition). Maintain ATC assigned altitude. Expect filed altitude 10 minutes after departure.

HAWES TRANSITION (LURIC7.HAWES)

ORRTH TRANSITION (LURIC7.ORRTH)

NOTE: Chart not to scale.

SC-5, 25 FEB 2021 to 25 MAR 2021

SC-5, 25 FEB 2021 to 25 MAR 2021