

# BLTWY SIX DEPARTURE (RNAV)

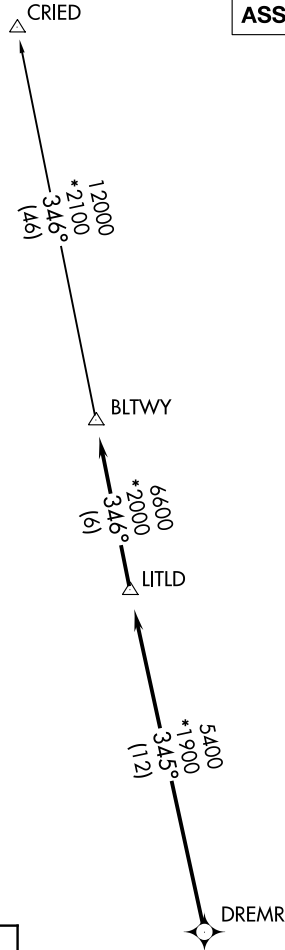
ATIS★  
 118.125  
 CLNC DEL  
 121.4  
 CLNC DEL (when twr closed)  
 119.25  
 GND CON  
 121.4  
 SUGARLAND TOWER★  
 118.65 (CTAF)  
 HOUSTON DEP CON  
 123.8 257.7

**TOP ALTITUDE:  
 ASSIGNED BY ATC**

NOTE: RADAR required.  
 NOTE: DME/DME/IRU or GPS required.  
 NOTE: RNAV 1.

### TAKEOFF MINIMUMS

Rwys 17, 35: Standard with minimum climb  
 of 500' per NM to 600.



SC-5, 25 FEB 2021 to 25 MAR 2021

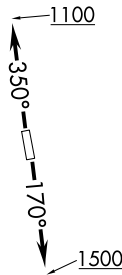
SC-5, 25 FEB 2021 to 25 MAR 2021

### DEPARTURE ROUTE DESCRIPTION

TAKEOFF RWY 17: Climb on heading 170° to 1500 for RADAR vectors to DREMR, thence . . .

TAKEOFF RWY 35: Climb on heading 350° to 1100 for RADAR vectors to DREMR, thence . . .

...on track 345° to LITLD, then on track 346° to BLTWY, then on (transition). Maintain ATC assigned altitude. Expect filed altitude 10 minutes after departure.



CRIED TRANSITION (BLTWY6.CRIED)

NOTE: Chart not to scale.

# BLTWY SIX DEPARTURE (RNAV)

(BLTWY6.BLTWY) 25APR19