

WAAS CH 50231 W05A	APP CRS 047°	Rwy Idg TDZE 429 Apt Elev 441	5000
--	------------------------	---	-------------

RNAV (GPS) RWY 5

NORTH CENTRAL STATE (SFZ)

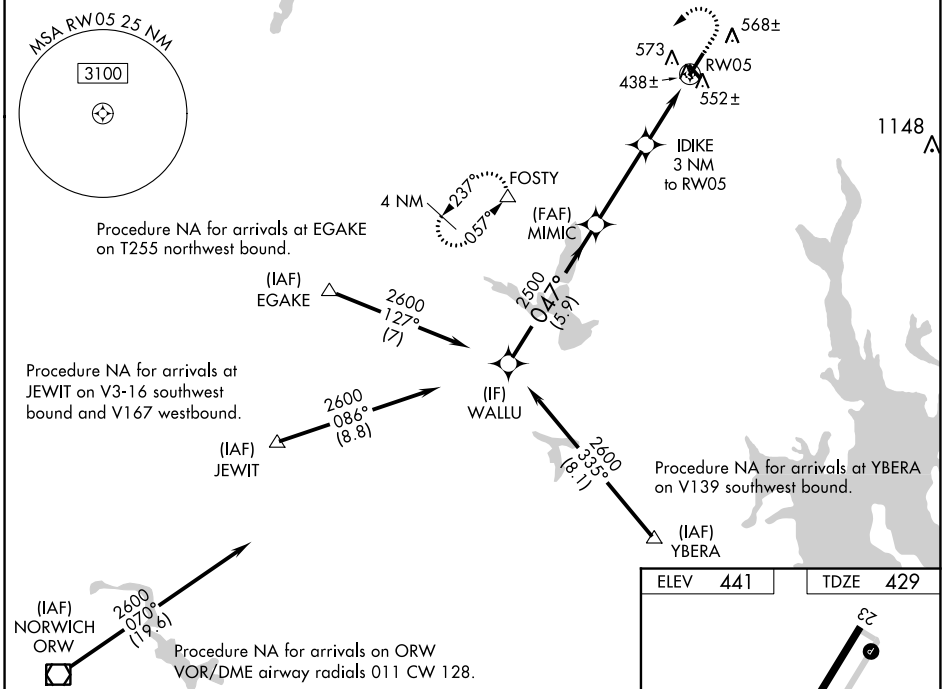
⚠ Circling Rwy 15, 33 NA at night. Baro-VNAV NA when using Providence altimeter setting. For uncompensated Baro-VNAV systems, LNAV/VNAV NA below -15°C (4°F) or above 54°C (130°F). For inoperative MAL5, increase LPV all Cats visibility to 3/8 mile. DME/DME RNP-0.3 NA. VDP NA with Providence altimeter setting. When local altimeter setting not received, use Providence altimeter setting and increase all DA 82 feet and all MDA 100 feet; increase LPV all Cats visibility 1/8 mile, increase LNAV/VNAV all Cats and LNAV Cat C visibility 1/4 mile. For inoperative MAL5, when using Providence altimeter setting increase LPV all Cats visibility to 1 mile.

MAL5

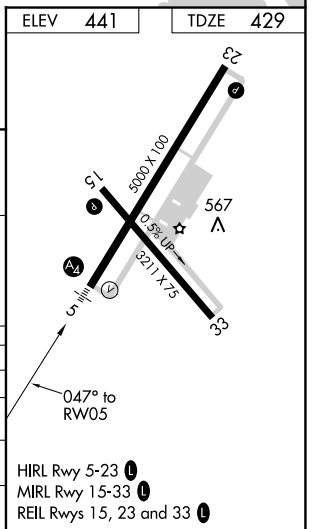


MISSED APPROACH:
Climb to 2000 then descending left turn to 2500 direct FOSTY and hold.

AWOS-3PT 120.775	PROVIDENCE APP CON ★ 123.675 244.875	CLNC DEL 124.35	UNICOM 123.075 (CTAF) 0
----------------------------	--	---------------------------	-----------------------------------



WALLU	MIMIC	IDIKE	FOSTY	
2600	2500	2500	2500	
047°				
GP 3.00° TCH 52				
5.9 NM	3.4 NM	2 NM	1 NM	
CATEGORY	A	B	C	D
LPV DA	700-3/4	271 (300-3/4)		NA
LNAV/VNAV DA	835-1 1/8	406 (400-1 1/8)		NA
LNAV MDA	800-3/4	371 (400-3/4)	800-7/8	371 (400-7/8)
C CIRCLING	900-1	459 (500-1)	900-1 1/2	459 (500-1 1/2)



NE-1, 25 FEB 2021 to 25 MAR 2021

NE-1, 25 FEB 2021 to 25 MAR 2021