

(SSTIK4.SSTIK) 18256

SSTIK FOUR DEPARTURE (RNAV)

SAN FRANCISCO INTL (SFO)
SAN FRANCISCO, CALIFORNIA

AL-375 (FAA)

D-ATIS
113.7 115.8 118.85
CLNC DEL
118.2
CPDLC
GND CON
121.8
SAN FRANCISCO TOWER
120.5 269.1
NORCAL DEP CON
135.1 307.2

**TOP ALTITUDE:
FL190**

DEPARTURE ROUTE DESCRIPTION

TAKEOFF RUNWAYS 1L/R: Climb heading 014° to 520 and at or below 210K, then climbing left turn direct SSTIK, then climbing left turn direct PORTE at or below 10000. Thence . . .

. . . on (transition). Maintain FL190, expect filed altitude 10 minutes after departure.

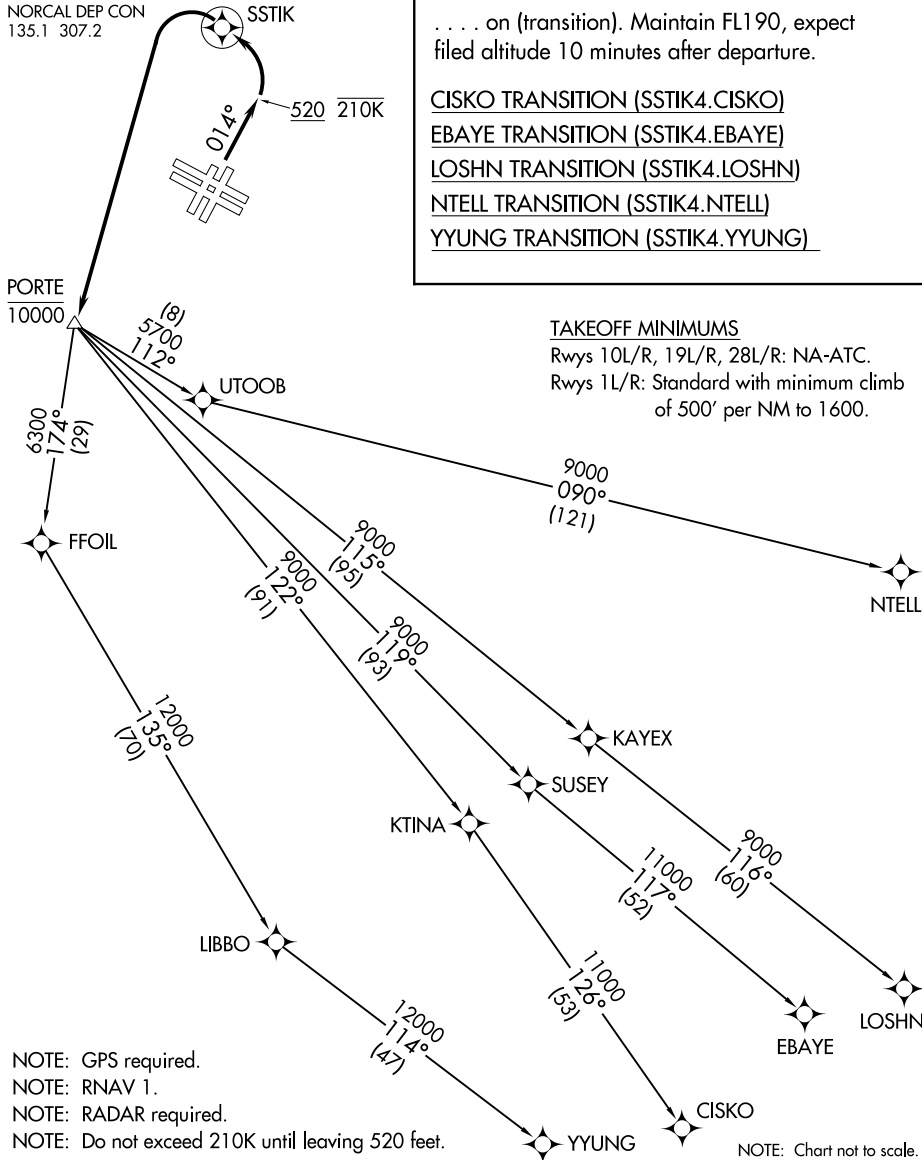
CISKO TRANSITION (SSTIK4.CISKO)

EBAYE TRANSITION (SSTIK4.EBAYE)

LOSHN TRANSITION (SSTIK4.LOSHN)

NTELL TRANSITION (SSTIK4.NTELL)

YYUNG TRANSITION (SSTIK4.YYUNG)



TAKEOFF MINIMUMS

Rwys 10L/R, 19L/R, 28L/R: NA-ATC.

Rwys 1L/R: Standard with minimum climb of 500' per NM to 1600.

- NOTE: GPS required.
- NOTE: RNAV 1.
- NOTE: RADAR required.
- NOTE: Do not exceed 210K until leaving 520 feet.

NOTE: Chart not to scale.

SW-2, 25 FEB 2021 to 25 MAR 2021

SW-2, 25 FEB 2021 to 25 MAR 2021

SSTIK FOUR DEPARTURE (RNAV)

(SSTIK4.SSTIK) 13SEP18

SAN FRANCISCO, CALIFORNIA
SAN FRANCISCO INTL (SFO)