

RNAV (GPS) X RWY 28R

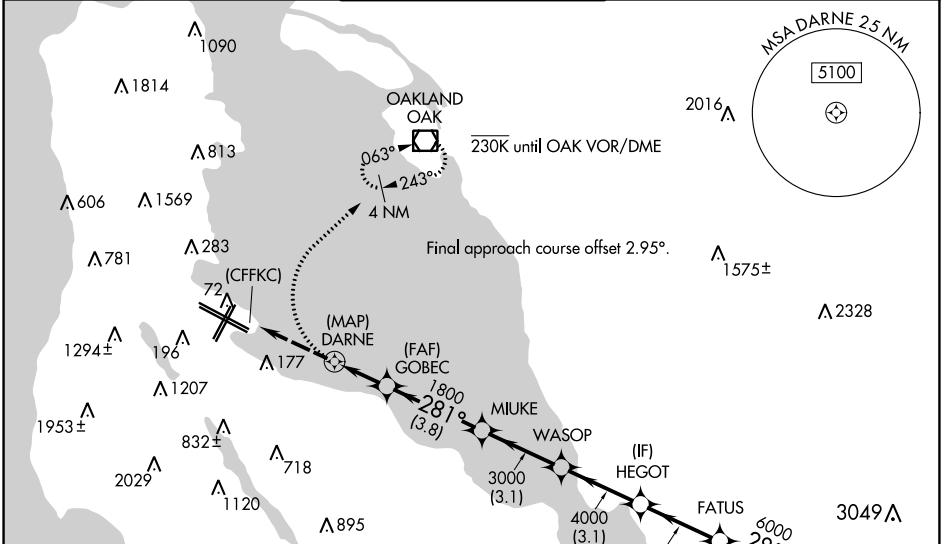
SAN FRANCISCO INTL (SFO)

APP CRS 281°	Rwy Idg 11236
	TDZE 13
	Apt Elev 13

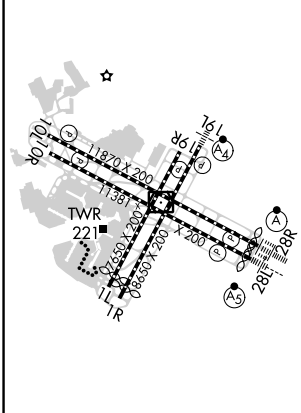
NA Runway 28L and 28R separated by 750 feet centerline to centerline. DME/DME RNP-0.3 NA. When executing a missed approach or go-around, unless otherwise instructed by ATC, initially turn right to 030° utilizing heading mode. Inoperative table does not apply. For uncompensated Baro-VNAV systems, LNAV/VNAV NA below 2°C (36°F) or above 54°C (130°F).
 *If a go-around executed after passing DARNE, go-around requires a minimum climb of 380 feet per NM to 1800.

ALSF-2 MISSED APPROACH: Climbing right turn to 3000 on heading 030° then direct OAK VOR/DME and hold.

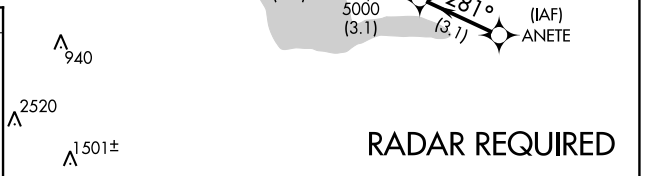
D-ATIS 113.7 115.8 118.85	NORCAL APP CON 134.5 338.2	SAN FRANCISCO TOWER 120.5 269.1	GND CON 121.8	CLNC DEL 118.2	CPDLC
-------------------------------------	--------------------------------------	---	-------------------------	--------------------------	-------



ELEV 13	D	TDZE 13
---------	----------	---------



TDZ/CL Rwy 19L and 28R
 REIL Rwy 1L, 1R, and 10L
 HIRL all Rwy



3000	OAK	VGSI and RNAV glidepath not coincident (VGSI Angle 3.00/TCH 68).		
hdg 030°				
		ANETE 7000		
		FATUS 6000		
		HEGOT 5000		
		WASOP 4000		
		MIUKE 3000		
		GOBEC 1800		
		DARNE 1140		
		(CFFKC)		
		1140		
		1800		
		3.4 - 2.1 NM - 3.8 NM - 3.1 NM - 3.1 NM - 3.1 NM		
CATEGORY	A	B	C	D
LNAV/VNAV DA*	1140-4 1127 (1200-4)			

GP 3.00°	TCH 55
----------	--------

SW-2, 25 FEB 2021 to 25 MAR 2021

SW-2, 25 FEB 2021 to 25 MAR 2021