

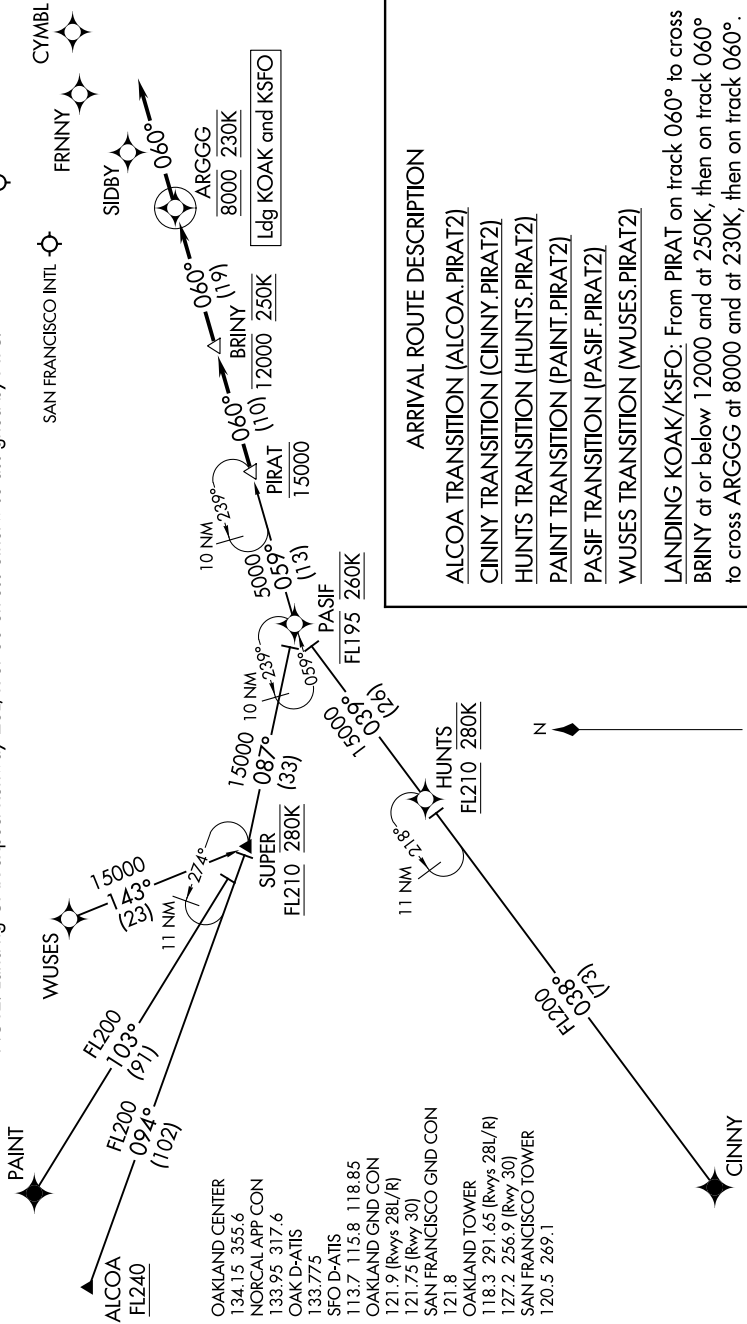
PIRAT TWO ARRIVAL (RNAV)

AL-375 (FAA)

SAN FRANCISCO, CALIFORNIA

SW-2, 25 FEB 2021 to 25 MAR 2021

- NOTE: RADAR required.
- NOTE: RNAV 1.
- NOTE: GPS required.
- NOTE: Turboplet and turboprop aircraft only.
- NOTE: Landing SFO expect Runway 28L/R unless otherwise assigned by ATC.
- NOTE: Landing OAK expect Runway 28L/R or 30 unless otherwise assigned by ATC.



- ARRIVAL ROUTE DESCRIPTION**
- ALCOA TRANSITION (ALCOA.PIRAT2)
  - CINNY TRANSITION (CINNY.PIRAT2)
  - HUNTS TRANSITION (HUNTS.PIRAT2)
  - PAINT TRANSITION (PAINT.PIRAT2)
  - PASIF TRANSITION (PASIF.PIRAT2)
  - WUSES TRANSITION (WUSES.PIRAT2)
- LANDING KOAK/KSFO:** From PIRAT on track 060° to cross BRINY at or below 12000 and at 250K, then on track 060° to cross ARGGG at 8000 and at 230K, then on track 060°. Expect RADAR vectors to assigned instrument approach.

NOTE: Chart not to scale.

SW-2, 25 FEB 2021 to 25 MAR 2021

PIRAT TWO ARRIVAL (RNAV)

SAN FRANCISCO, CALIFORNIA

- OAKLAND CENTER  
134.15 355.6
- NORCAL APP CON  
133.95 317.6
- OAK D-ATIS  
133.775
- SFO D-ATIS  
113.7 115.8 118.85
- OAKLAND GND CON  
121.9 (Rwys 28L/R)
- 121.75 (Rwy 30)
- SAN FRANCISCO GND CON  
121.8
- OAKLAND TOWER  
118.3 291.65 (Rwys 28L/R)
- 127.2 256.9 (Rwy 30)
- SAN FRANCISCO TOWER  
120.5 269.1