

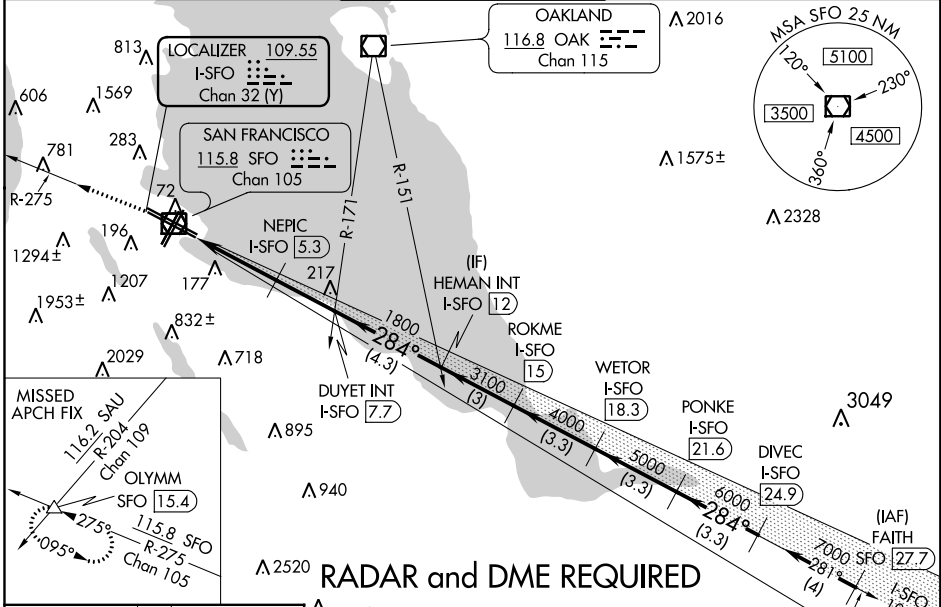
ILS PRM RWY 28L (SIMULTANEOUS CLOSE PARALLEL) SAN FRANCISCO INTL (SFO)

LOC/DME I-SFO 109.55 Chan 32 (Y)	APP CRS 284°	Rwy Idg 10275 TDZE 13 Apt Elev 13
---	------------------------	--

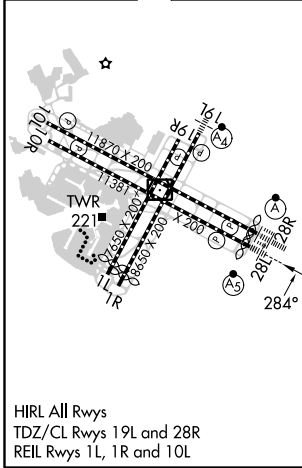
NA Rwy 28L and 28R separated by 750 feet centerline to centerline. DME required. Missed approach requires minimum climb of 325 feet per NM to 2100; if unable to meet climb gradient, see ILS or LOC RWY 28L. RVR 1800 authorized with the use of FD or AP or HUD to DA. Simultaneous Close Parallel approach authorized with LDA PRM RWY 28R and RNAV (GPS) PRM X RWY 28R. Procedure NA when glide slope not available. Dual VHF comm required. See additional requirements on AAUP.

MALSR
MISSED APPROACH:
Climb to 4000 on SFO
VOR/DME R-275 to
OLYMM INT/SFO
15.4 DME and hold.

D-ATIS 113.7 115.8 118.85	NORCAL APP CON 134.5 338.2	SAN FRANCISCO TOWER 120.5 269.1 PRM 125.15	GND CON 121.8	CLNC DEL 118.2	CPDLC
---	--------------------------------------	--	-------------------------	--------------------------	-------



ELEV 13 TDZE 13



ALTERNATE MISSED APCH FIX
SAN JOSE SJC 114.1 Chan 88
SAN JOSE 114.1 SJC Chan 88

4000 OLYMM SFO R-275

VGSI and ILS glidepath not coincident (VGSI Angle 2.85/TCH 67).

DUYET INT I-SFO 5.3	HEMAN INT I-SFO 12	ROKME I-SFO 15	WETOR I-SFO 18.3	PONKE I-SFO 21.6	DIVEC I-SFO 24.9
---------------------	--------------------	----------------	------------------	------------------	------------------

Use I-SFO DME when on the LOC course.

3.3 NM	2.4 NM	4.3 NM	3 NM	3.3 NM	3.3 NM	3.3 NM
Category	A	B	C	D		
S-ILS 28L	213/24 200 (200-1/2)					

284° 7000 GS 2.85° TCH 53

SW-2, 25 FEB 2021 to 25 MAR 2021

SW-2, 25 FEB 2021 to 25 MAR 2021