

LOC/DME I-SFO 109.55 Chan 32 (Y)	APP CRS 284°	Rwy Idg TDZE Apt Elev	10275 13 13
---	------------------------	-----------------------------	--

ILS or LOC RWY 28L

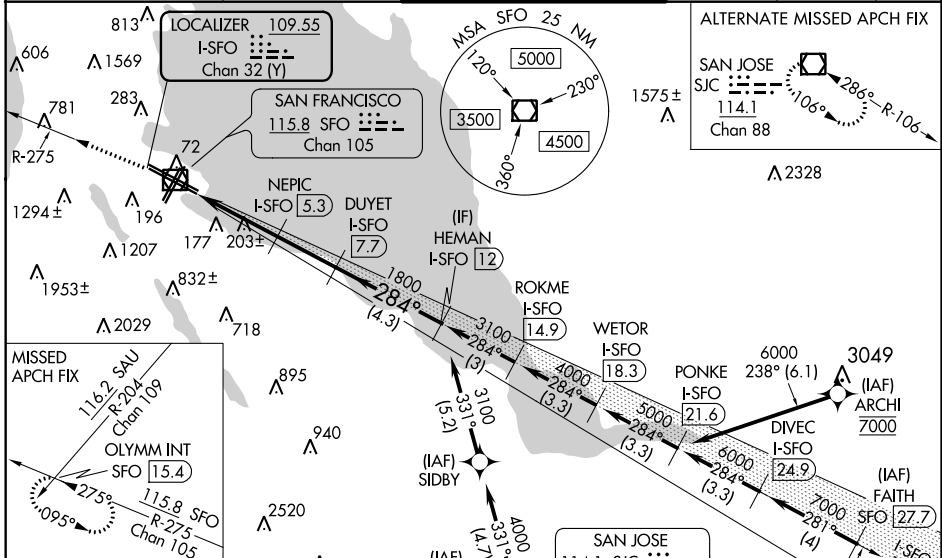
SAN FRANCISCO INTL (SFO)

RNAV 1- GPS or RADAR required for procedure entry. DME required.

MAJLSR

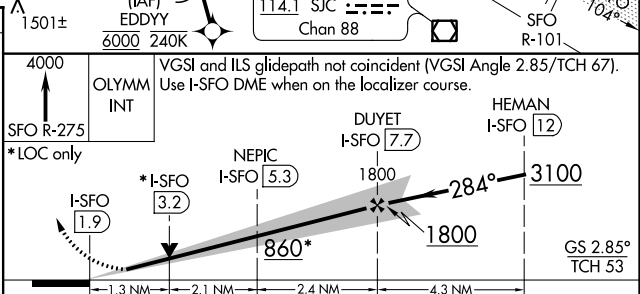
MISSED APPROACH: Climb to 4000 on SFO VOR/DME R-275 to OLYMM INT/SFO 15.4 DME and hold, continue climb-in-hold to 4000.
† Missed approach requires minimum climb of 330 feet per NM to 1600.

D-ATIS 113.7 115.8 118.85	NORCAL APP CON 134.5 338.2	SAN FRANCISCO TOWER 120.5 269.1	GND CON 121.8	CLNC DEL 118.2	CPDLC
-------------------------------------	--------------------------------------	---	-------------------------	--------------------------	-------



ELEV 13	D	TDZE 13
---------	----------	---------

HIRL All Rwy's
TDZ/CL Rwy's 19L and 28R
REIL Rwy's 1L, 1R and 10L



CATEGORY	A	B	C	D
S-ILS 28L †	213/24 200 (200-½)			
S-ILS 28L ††	789-1¼ 776 (800-1¼)			
S-LOC 28L †	460/24 447 (500-½)		460/45 447 (500-¾)	
S-LOC 28L **	860/24 847 (900-½)		860-178 847 (900-178)	
C CIRCLING	860-1¼ 847 (900-1¼)		960-1¼ 1547 (1600-3)	

SW-2, 25 FEB 2021 to 25 MAR 2021

SW-2, 25 FEB 2021 to 25 MAR 2021