

VORTAC ENE <b>117.1</b> Chan <b>118</b>	APP CRS <b>261°</b>	Rwy Idg TDZE Apt Elev	<b>6001</b> <b>235</b> <b>244</b>
---	------------------------	-----------------------------	---

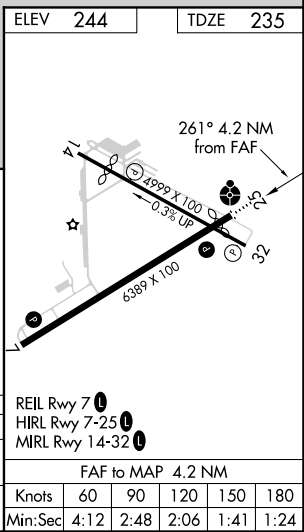
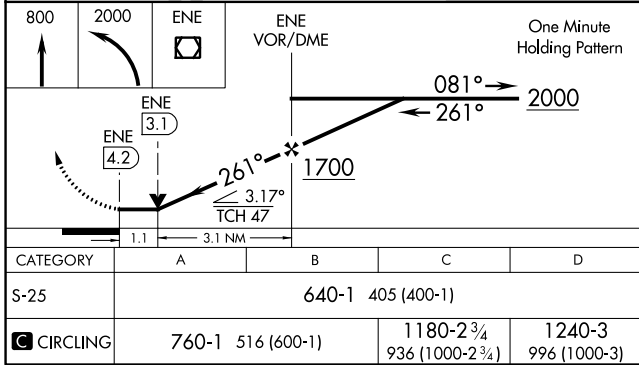
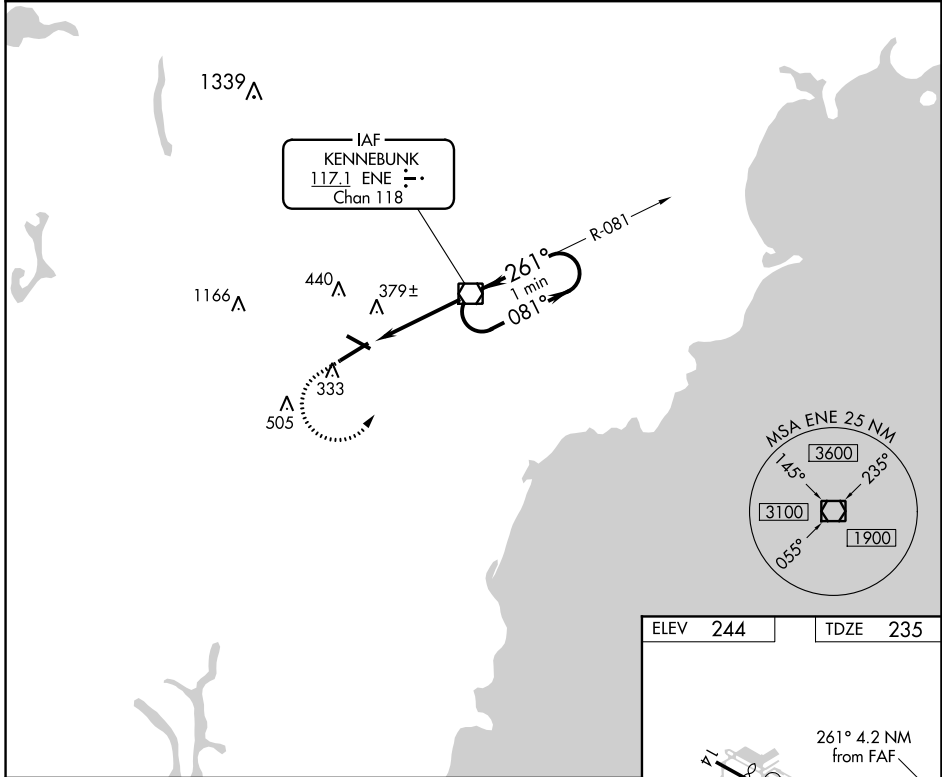
# VOR RWY 25

SANFORD SEACOAST RGNL (SFM)

**⚠** Inoperative table does not apply to S-25 Cats A/B. For inoperative ODALS, increase S-25 Cats C/D visibility to 1 $\frac{1}{8}$ . When local altimeter setting not received, use Rochester, NH altimeter setting increase all MDA 40 feet, S-25 Cats C/D visibility  $\frac{1}{8}$  SM, and Circling Cat C visibility  $\frac{1}{4}$  SM; for inop ODALS, increase S-25 Cats C/D visibility to 1 $\frac{3}{8}$ . Rwy 25 helicopter visibility reduction below  $\frac{3}{4}$  SM NA. Rwy 32 helicopter visibility reduction below 1 SM NA.

**ODALS** MISSED APPROACH: Climb to 800 then climbing left turn to 2000 direct ENE VOR/DME and hold.

AWOS-3PT <b>120.025</b>	PORTLAND APP CON * <b>119.75 269.35</b>	CLNC DEL <b>121.725</b>	UNICOM <b>123.075</b> (CTAF) <b>0</b>
----------------------------	--	----------------------------	--



NE-1, 25 FEB 2021 to 25 MAR 2021

NE-1, 25 FEB 2021 to 25 MAR 2021