

WAAS CH <b>86921</b> W07A	APP CRS <b>075°</b>	Rwy Idg TDZE <b>241</b> Apt Elev <b>244</b>	<b>6389</b>
---------------------------------	------------------------	---	-------------

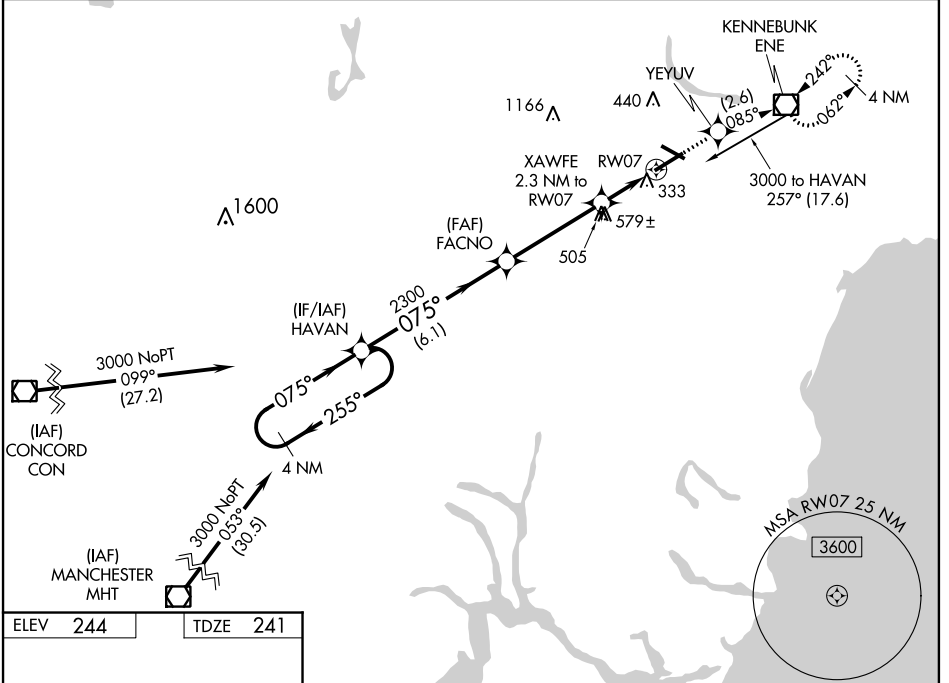
# RNAV (GPS) RWY 7

SANFORD SEACOAST RGNL (SFM)

For uncompensated Baro-VNAV systems, LNAV/VNAV NA below -15°C (5°F) or above 54°C (130°F). Helicopter visibility reduction below 3/4 SM NA. DME/DME RNP-0.3 NA. Baro-VNAV and VDP NA when using Rochester, NH altimeter setting. When local altimeter setting not received, use Rochester, NH altimeter setting: increase LPV DA to 479; increase LNAV/VNAV DA to 699 and visibility all Cats 1/2 SM, increase all MDA 40 feet, and Circling Cat C visibility 1/4 SM.

MISSED APPROACH: Climb to 3000 direct YEVUV and on track 085° to ENE VOR/DME and hold, continue climb-in-hold to 3000.

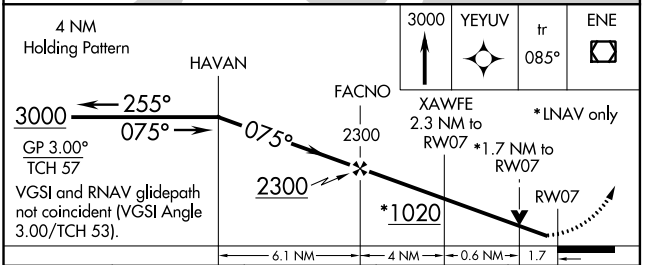
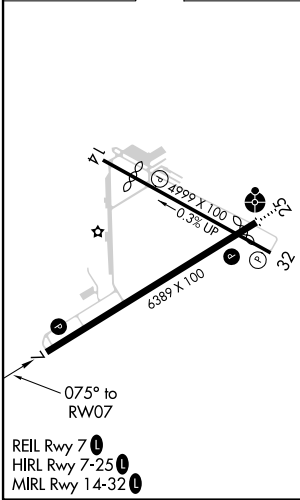
AWOS-3PT <b>120.025</b>	PORTLAND APP CON* <b>119.75 269.35</b>	CLNC DEL <b>121.725</b>	UNICOM <b>123.075 (CTAF)</b>
----------------------------	---	----------------------------	---------------------------------



NE-1, 25 FEB 2021 to 25 MAR 2021

NE-1, 25 FEB 2021 to 25 MAR 2021

ELEV 244	TDZE 241
----------	----------



CATEGORY	A	B	C	D
LPV DA		441-3/4	200 (200-3/4)	
LNAV/VNAV DA		650-1 3/8	409 (500-1 3/8)	
LNAV MDA	840-1	599 (600-1)	840-1 3/4	599 (600-1 3/4)
CIRCLING	840-1	596 (600-1)	1180-2 3/4 936 (1000-2 3/4)	1240-3 996 (1000-3)