

APP CRS 316°	Rwy Idg TDZE Apt Elev	4999 239 244
------------------------	-----------------------------	---

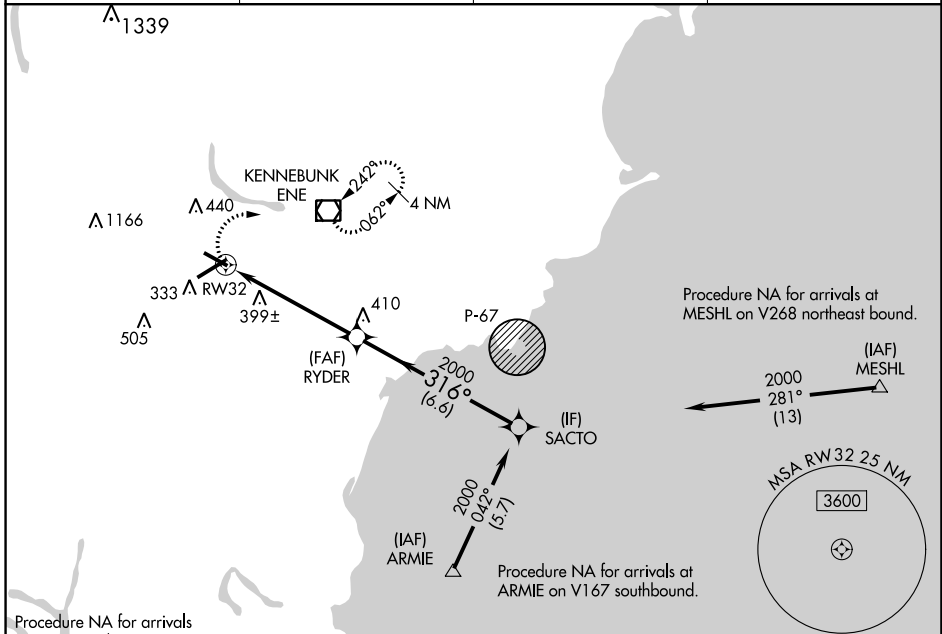
RNAV (GPS) RWY 32

SANFORD SEACOAST RGNL (SFM)

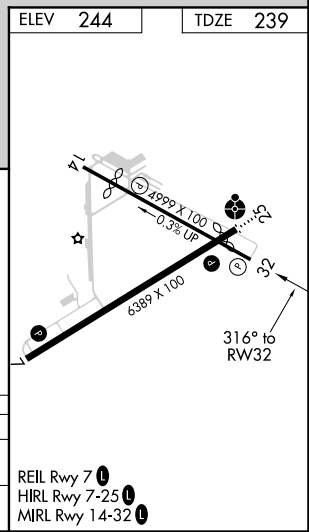
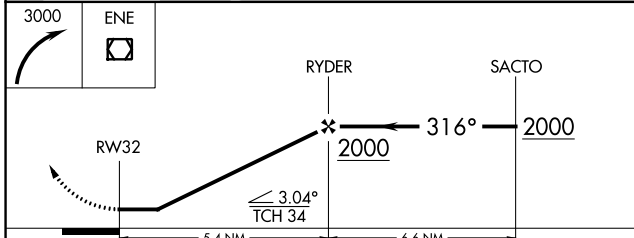
⚠ DME/DME RNP-0.3 NA. When Rwy 32 VGSI inoperative, Straight-in and Circling minimums NA at night. Helicopter visibility reduction below 1 SM NA.
⚠ When local altimeter setting not received, use Rochester, NH altimeter setting and increase all MDA 40 feet, LNAV Cat D and Circling Cat C visibility ¼ SM.

MISSED APPROACH: Climbing right turn to 3000 direct ENE VOR/DME and hold, continue climb-in-hold to 3000.

AWOS-3PT 120.025	PORTLAND APP CON* 119.75 269.35	CLNC DEL 121.725	UNICOM 123.075 (CTAF) 0
----------------------------	---	----------------------------	-----------------------------------



ELEV 244	TDZE 239
----------	----------



CATEGORY	A	B	C	D
LNAV MDA	660-1	421 (500-1)	660-1¼	421 (500-1¼)
C CIRCLING	760-1	516 (600-1)	1180-2¾ 936 (1000-2¾)	1240-3 996 (1000-3)

NE-1, 25 FEB 2021 to 25 MAR 2021

NE-1, 25 FEB 2021 to 25 MAR 2021