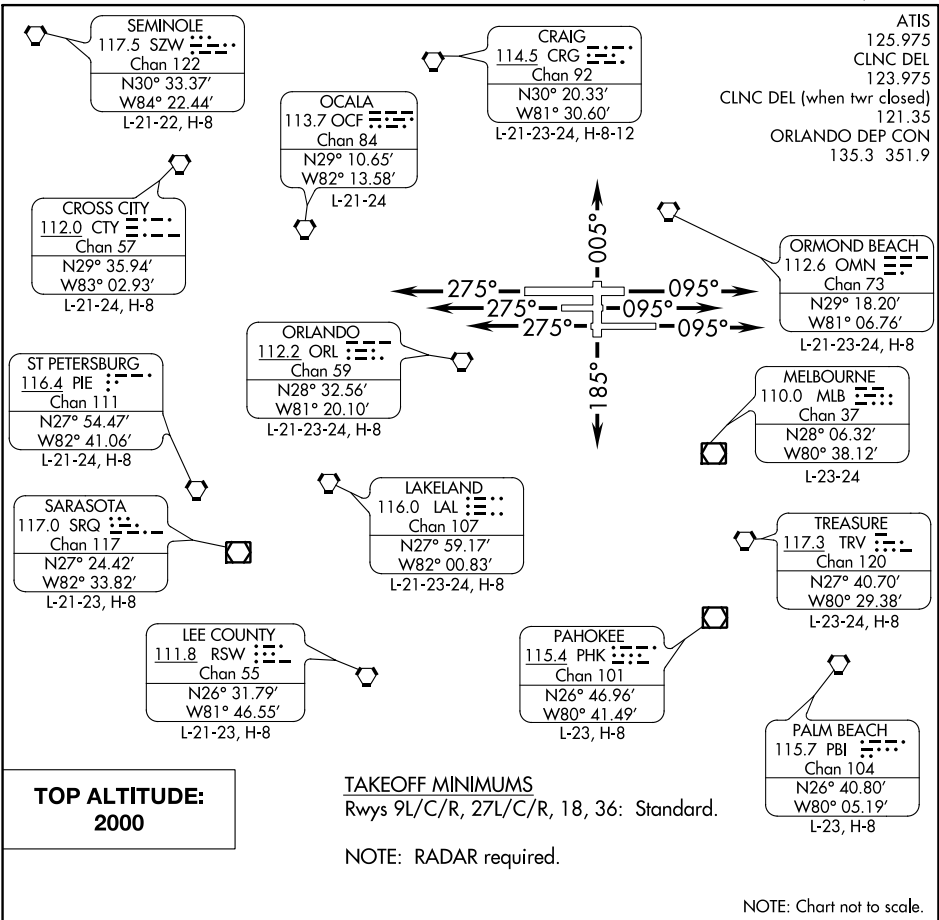


SANFORD EIGHT DEPARTURE



SE-3, 25 FEB 2021 to 25 MAR 2021

SE-3, 25 FEB 2021 to 25 MAR 2021

DEPARTURE ROUTE DESCRIPTION

TAKEOFF RUNWAYS 9L/C/R: Climb heading 095°, thence. . . .

TAKEOFF RUNWAYS 27L/C/R: Climb heading 275°, thence. . . .

TAKEOFF RUNWAY 18: Climb heading 185°, thence. . . .

TAKEOFF RUNWAY 36: Climb heading 005°, thence. . . .

. . . .expect vectors to appropriate fix. Maintain 2000. Expect further clearance to filed altitude/flight level ten (10) minutes after departure.