

APP CRS	Rwy Idg	<b>5839</b>
<b>275°</b>	TDZE	<b>28</b>
	Apt Elev	<b>55</b>

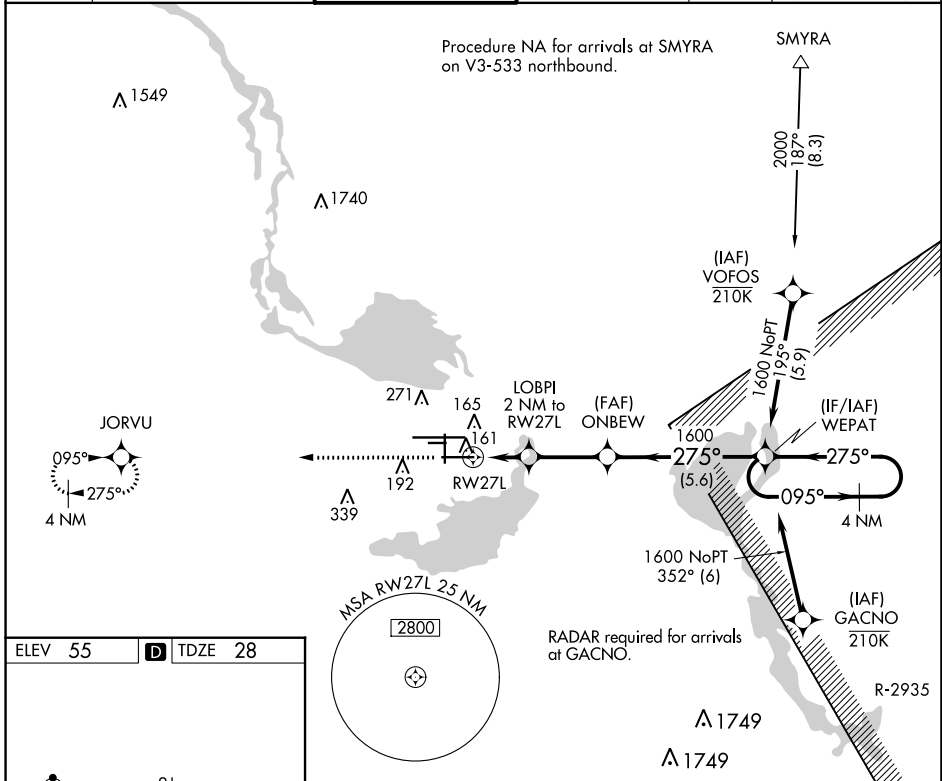
# RNAV (GPS) RWY 27L

ORLANDO SANFORD INTL (SF'B)

**▼** Night Landing: Rwy 27C NA. DME/DME RNP-0.3 NA. Visibility reduction by helicopters NA. When local altimeter setting not received, use Executive altimeter setting: increase all MDAs 60 feet and visibility Cat C ¼ SM. VDP NA when using Executive altimeter setting.

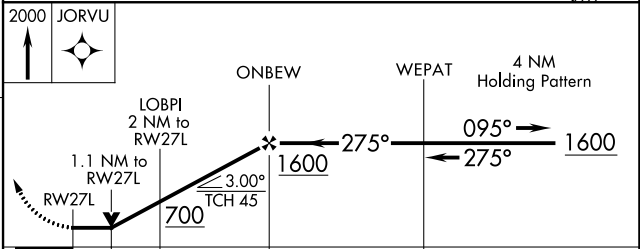
**MISSED APPROACH:** Climb to 2000 direct JORVU and hold.

ATIS	ORLANDO APP CON	SANFORD TOWER*	GND CON	CLNC DEL	CLNC DEL
<b>125.975</b>	<b>135.3 351.9 (NORTH)</b> <b>119.775 351.9 (SOUTH)</b>	<b>120.3(CTAF) 254.35</b>	<b>121.35 254.35</b>	<b>123.975</b>	<b>121.35</b> (when twr closed)



ELEV	55	<b>D</b>	TDZE	28
------	----	----------	------	----

MIRL Rwy 9C-27C and 18-36 **!**  
 HIRL Rwy 9L-27R and 9R-27L **!**  
 REIL Rws 9C, 18, 27L and 36



CATEGORY	A	B	C	D
LNNAV MDA	420-1	392 (400-1)	420-1½ 392 (400-1½)	420-2 392 (400-2)
<b>C</b> CIRCLING	580-1	525 (600-1)	600-1½ 545 (600-1½)	640-2 585 (600-2)

SE-3, 25 FEB 2021 to 25 MAR 2021

SE-3, 25 FEB 2021 to 25 MAR 2021