

LOC/DME I-SND <b>108.9</b> Chan <b>26</b>	APP CRS <b>095°</b>	Rwy ldg <b>10002</b> TDZE <b>55</b> Apt Elev <b>55</b>
---	------------------------	--

# ILS or LOC RWY 9L

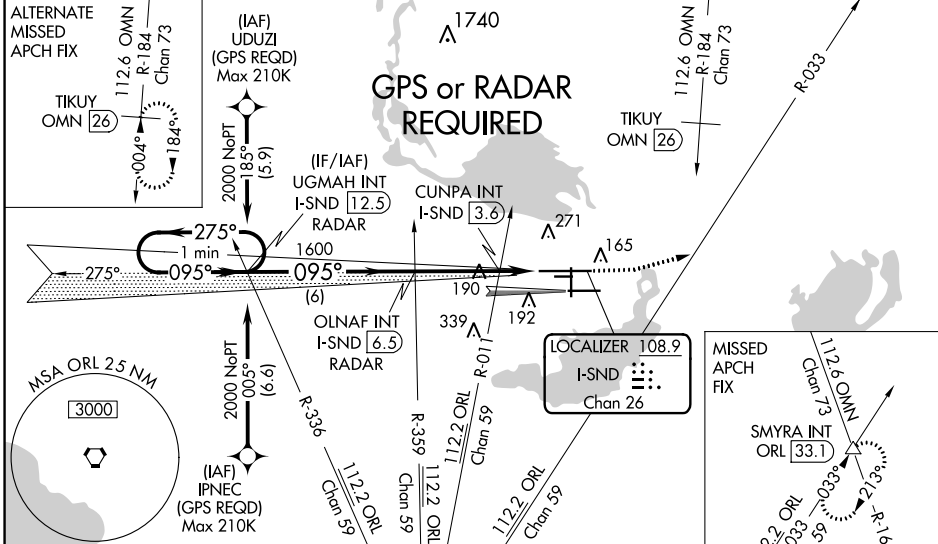
ORLANDO SANFORD INTL (SF7B)

**⚠** VDP NA with Executive altimeter setting. When local altimeter setting not received, use Executive altimeter setting: increase DA to 298 feet; increase all MDAs 60 feet and visibility Cots C and D ¼ SM. Simultaneous approach authorized with Rwy 9R. Circling to Rwy 27C NA at night.

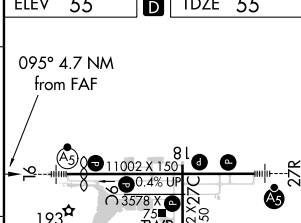
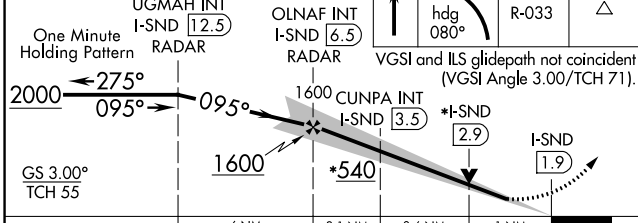


**MISSED APPROACH:** Climb to 500 then climbing left turn to 2000 on heading 080° and ORL VORTAC R-033 to SMYRA INT/ORL 33.1 DME and hold.

ATIS <b>125.975</b>	ORLANDO APP CON <b>135.3 351.9</b> (NORTH) <b>119.775 351.9</b> (SOUTH)	<b>SANFORD TOWER*</b> <b>120.3</b> (CTAF) <b>0 254.35</b>	GND CON <b>121.35 254.35</b>	CLNC DEL <b>123.975</b>	CLNC DEL <b>121.35</b> (when twr closed)
------------------------	---	--	---------------------------------	----------------------------	--



\*600 when using Executive altimeter setting.  
\*LOC only.



CATEGORY	A	B	C	D
S-ILS 9L	255-½ 200 (200-½)			
S-LOC 9L	540-½ 485 (500-½)	540-1 485 (500-1)		
<b>C</b> CIRCLING	580-1 525 (600-1)	600-1½ 545 (600-1½)		640-2 585 (600-2)
CUNPA FIX MINIMUMS (DUAL VOR RECEIVER OR DME REQUIRED)				
S-LOC 9L	440-½ 385 (400-½)	440- 5/8 385 (400- 5/8)		
<b>C</b> CIRCLING	580-1 525 (600-1)	600-1½ 545 (600-1½)	640-2 585 (600-2)	

ELEV	55	TDZE	55
MIRL Rwy 9C-27C and 18-36			
HIRL Rwy 9L-27R and 9R-27L			
REIL Rwsy 9C, 18, 27L and 36			
FAF to MAP 4.7 NM			
Knots	60	90	120 150 180
Min:Sec	4:42	3:08	2:21 1:53 1:34

SE-3, 25 FEB 2021 to 25 MAR 2021

SE-3, 25 FEB 2021 to 25 MAR 2021