

WAAS CH <b>62918</b> <b>W01A</b>	APP CRS <b>015°</b>	Rwy Idg TDZE <b>1985</b> Apt Elev <b>1985</b>
--	------------------------	---

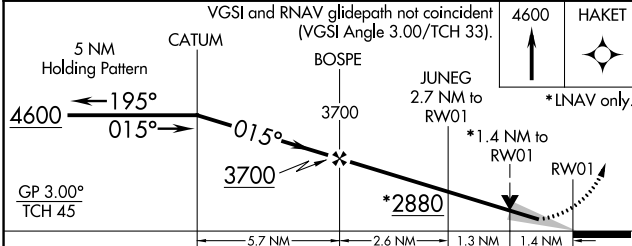
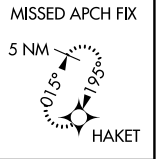
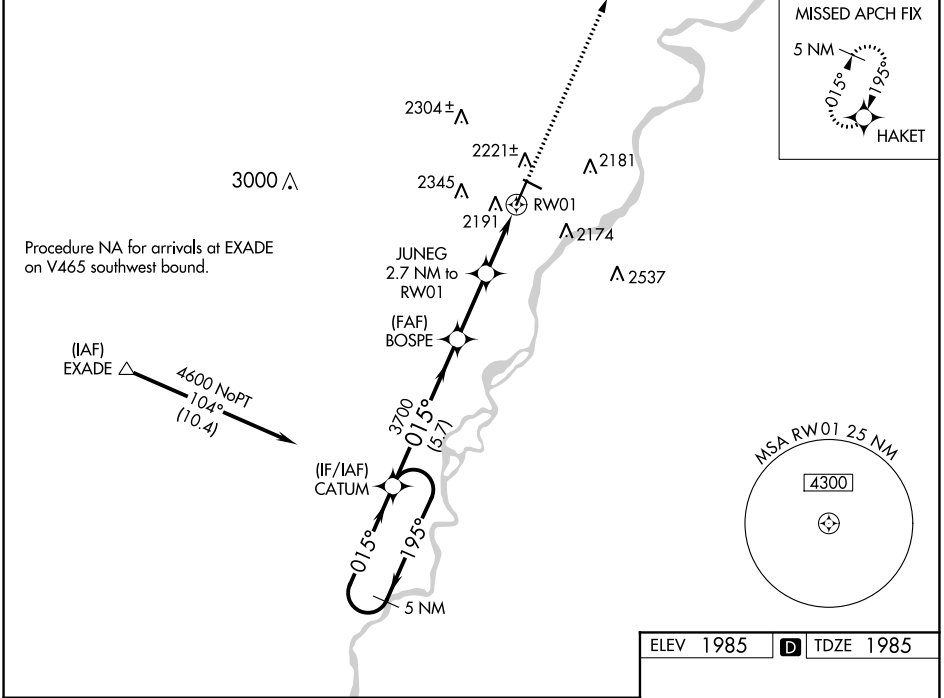
# RNAV (GPS) RWY 1

SIDNEY-RICHLAND RGNL (SDY)

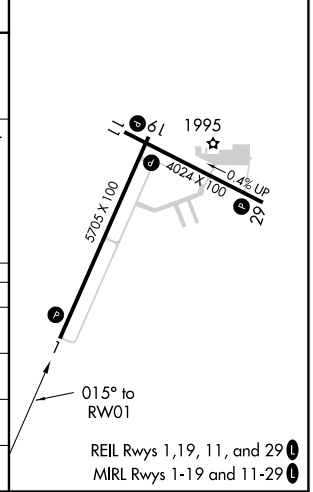
**⚠** For uncompensated Baro-VNAV systems, LNAV/VNAV NA below -20°C (-4°F) or above 54°C (130°F). Circling Rwy 11, 19, and 29 NA at night. DME/DME RNP-0.3 NA.

MISSED APPROACH: Climb to 4600 direct HAKET and hold.

AWOS-3PT <b>119.275</b>	SALT LAKE CENTER <b>126.85 305.2</b>	UNICOM <b>122.8 (CTAF) 0</b>
----------------------------	---	---------------------------------



ELEV 1985	<b>D</b> TDZE 1985
-----------	--------------------



CATEGORY	A	B	C	D
LPV DA		2238-7/8	253 (300-7/8)	
LNAV/VNAV DA		2419-1 1/2	434 (500-1 1/2)	
LNAV MDA	2460-1	475 (500-1)	2460-1 3/8	475 (500-1 3/8)
<b>C</b> CIRCLING	2580-1 595 (600-1)	2660-1 675 (700-1)	2700-2 715 (800-2)	2840-2 3/4 855 (900-2 3/4)

NW-1, 25 FEB 2021 to 25 MAR 2021

NW-1, 25 FEB 2021 to 25 MAR 2021