

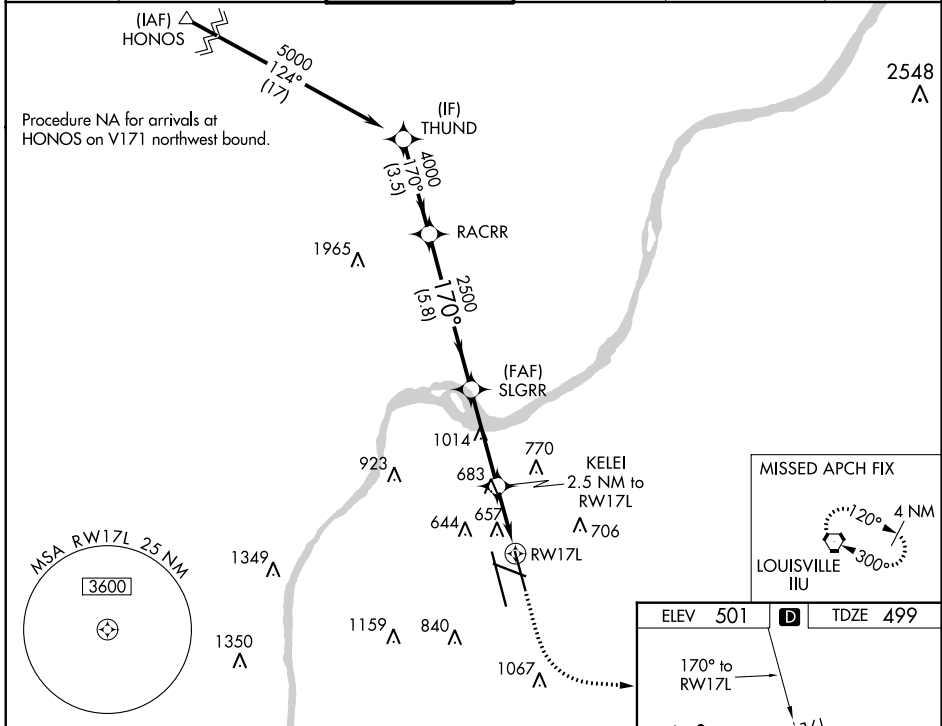
WAAS CH <b>90101</b> <b>W17B</b>	APP CRS <b>170°</b>	Rwy Idg TDZE Apt Elev	<b>7800</b> <b>499</b> <b>501</b>
--	------------------------	-----------------------------	---

# RNAV (GPS) Y RWY 17L

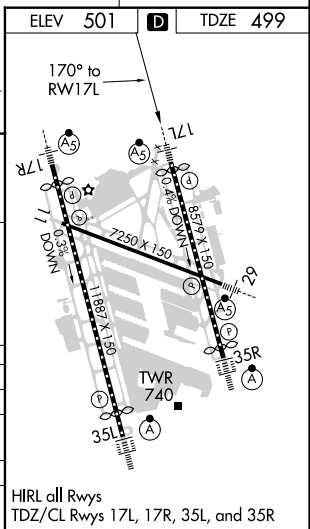
LOUISVILLE MUHAMMAD ALI INTL (SDF)

RNP APCH.	MALSR	MISSED APPROACH: Climb to 1000 then climbing left turn to 3000 direct IIL VORTAC and hold, continue climb-in-hold to 3000.
<p><b>⚠</b> Circling Rwy 11 NA at night. Simultaneous approach authorized. For uncompensated Baro-VNAV systems, LNAV/VNAV NA below -14°C or above 54°C. LNAV procedure NA during simultaneous operations. Use of FD or AP required during simultaneous operations.</p>		

D-ATIS <b>118.725</b>	LOUISVILLE APP CON <b>132.075 327.0</b>	LOUISVILLE TOWER <b>124.2 257.8</b>	GND CON <b>121.7 348.6</b>	CLNC DEL <b>126.1 275.8</b>	CPDLC
--------------------------	--	--	-------------------------------	--------------------------------	-------



THUND	VGSI and RNAV glidepath not coincident (VGSI Angle 3.32/TCH 71).			
RACRR	SLGRR	KELEI	1000	3000
5000	2500	2.5 NM to RWY 17L	↑	⤵
GP 3.00°	*1320	*1 NM to RWY 17L	IIL	IIL
TCH 55				
	3.5 NM	5.8 NM	3.6 NM	1.5 NM
CATEGORY	A	B	C	D
LPV DA		699/18	200 (200-½)	
LNAV/VNAV DA		818/24	319 (400-½)	
LNAV MDA	920/24	421 (500-½)	920/40	421 (500-¾)
<b>C</b> CIRCLING	1040-1 539 (600-1)	1140-1 639 (700-1)	1160-1¾ 659 (700-1¾)	1400-3 899 (900-3)



SE-1, 25 FEB 2021 to 25 MAR 2021

SE-1, 25 FEB 2021 to 25 MAR 2021