

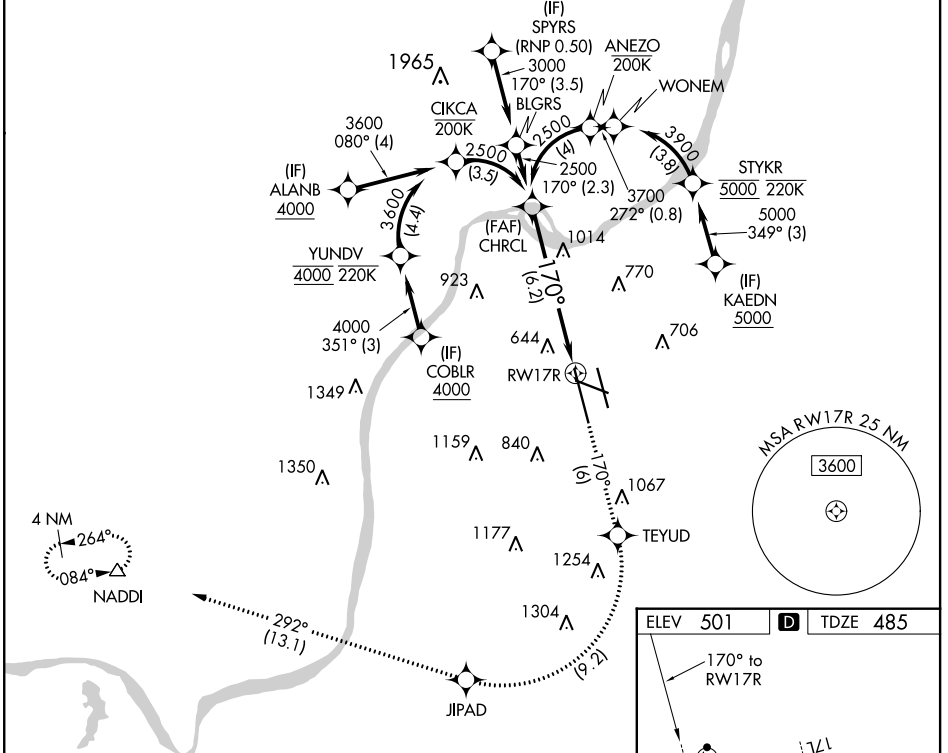
APP CRS	Rwy Idg 10000
170°	TDZE 485
	Apt Elev 501

RNAV (RNP) Z RWY 17R

LOUISVILLE MUHAMMAD ALI INTL (SDF)

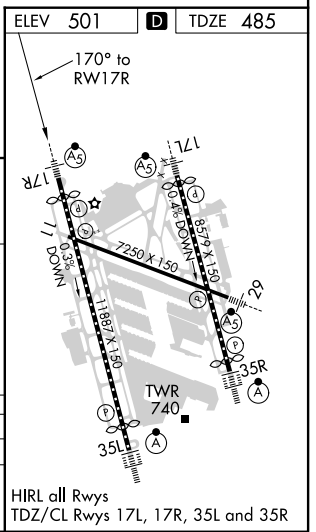
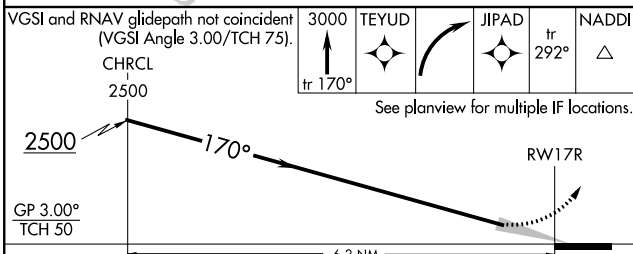
RNP AR APCH. RF required.		MALSR	MISSED APPROACH: Climb to 3000 on track 170° to TEYUD right turn to JIPAD and on track 292° to NADDI and hold.
<p>For uncompensated Baro-VNAV systems, procedure NA below -14°C or above 54°C. For inop ALS, increase RNP 0.30 all Cats visibility to 1 3/8 SM. Simultaneous approach authorized, except for arrivals at KAEDN, ALANB, and COBLR.</p>			

D-ATIS 118.725	LOUISVILLE APP CON 132.075 327.0	LOUISVILLE TOWER 124.2 257.8	GND CON 121.7 348.6	CLNC DEL 126.1 275.8	CPDLC
--------------------------	--------------------------------------------	----------------------------------------	-------------------------------	--------------------------------	-------



SE-1, 25 FEB 2021 to 25 MAR 2021

SE-1, 25 FEB 2021 to 25 MAR 2021



CATEGORY	A	B	C	D
RNP 0.30 DA	974/60		489 (500-1)	

AUTHORIZATION REQUIRED