

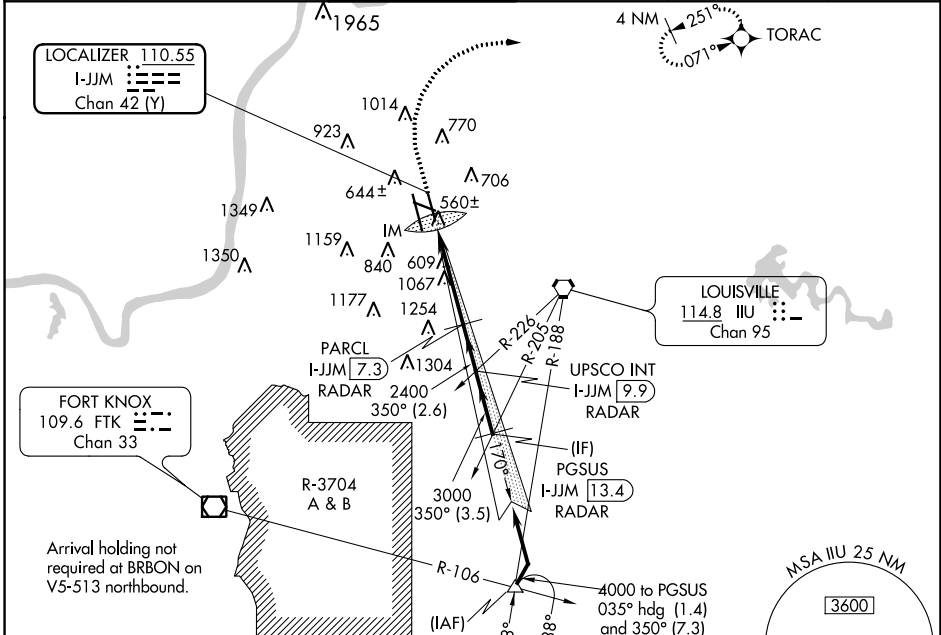
LOC/DME I-JJM <b>110.55</b> Chan <b>42</b> (Y)	APP CRS <b>350°</b>	Rwy Idg <b>7800</b> TDZE <b>480</b> Apt Elev <b>501</b>
--	------------------------	---

# ILS RWY 35R (CAT II & III)

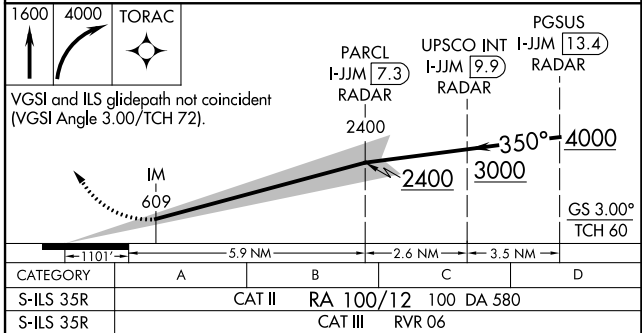
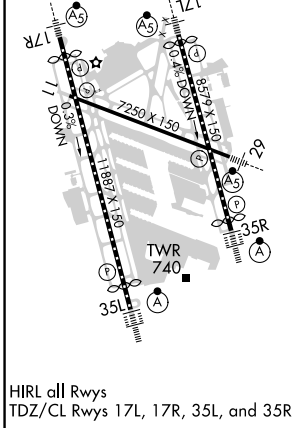
LOUISVILLE MUHAMMAD ALI INTL (SDF)

RNAV 1-GPS required.	ALSIF-2	MISSED APPROACH: Climb to 1600 then climbing right turn to 4000 direct TORAC and hold.
<p>Simultaneous approach authorized. Cat II: RVR 1000 authorized with specific OPSPEC, MSPEC, or LOA approval and use of autoland or HUD to touchdown.</p>		

D-ATIS <b>118.725</b>	LOUISVILLE APP CON <b>132.075 327.0</b>	LOUISVILLE TOWER <b>124.2 257.8</b>	GND CON <b>121.7 348.6</b>	CLNC DEL <b>126.1 275.8</b>	CPDLC
--------------------------	--	--	-------------------------------	--------------------------------	-------



ELEV 501	<b>D</b>	TDZE 480
----------	----------	----------



CATEGORY	A	B	C	D
S-ILS 35R	CAT II RA 100/12		100 DA 580	
S-ILS 35R	CAT III		RVR 06	

## CATEGORY II & III ILS - SPECIAL AIRCREW & AIRCRAFT CERTIFICATION REQUIRED

SE-1, 25 FEB 2021 to 25 MAR 2021

SE-1, 25 FEB 2021 to 25 MAR 2021