

LOC I-SBY <b>108.7</b>	APP CRS <b>319°</b>	Rwy Idg TDZE Apt Elev	<b>6400</b> <b>53</b> <b>53</b>
---------------------------	------------------------	-----------------------------	---------------------------------------

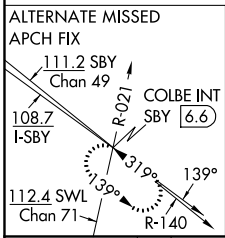
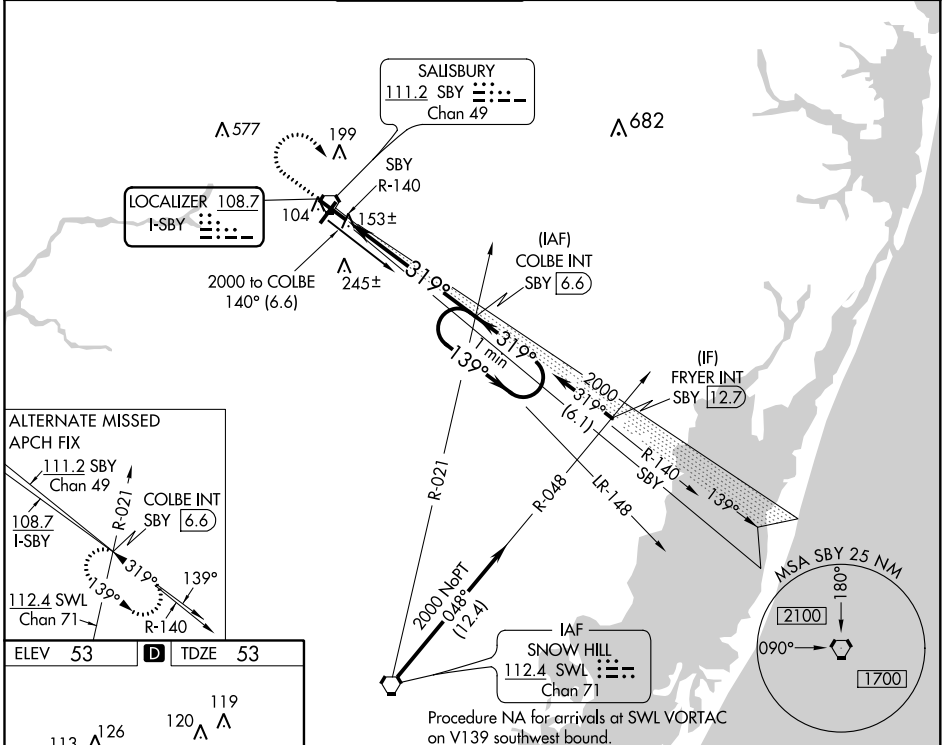
# ILS or LOC RWY 32

SALISBURY-OCEAN CITY WICOMICO RGNL (SBY)

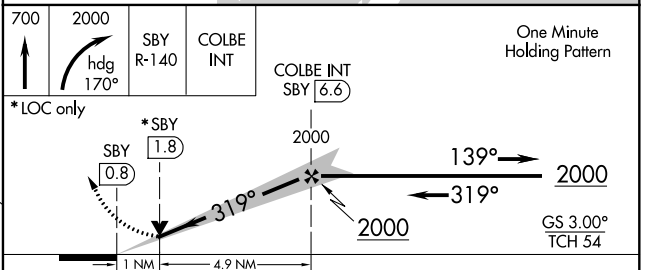
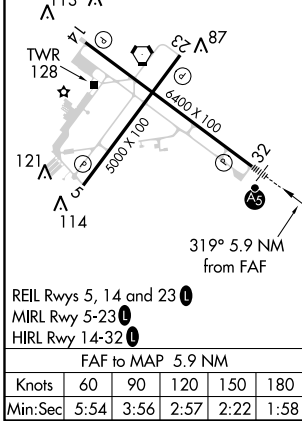
**⚠** When local altimeter setting not received, use Georgetown altimeter setting and increase DA 52 feet and all MDA 60 feet, and increase S-LOC 32 Cat C visibility ¼ mile.

**MALSR** MISSED APPROACH: Climb to 700 then climbing right turn to 2000 on heading 170° and on SBY VORTAC R-140 to COLBE INT/SBY VORTAC 6.6 DME and hold.

ASOS <b>118.325</b>	PATUXENT APP CON ★ <b>127.95 314.0</b>	SALISBURY TOWER ★ <b>119.425</b> (CTAF) <b>0</b>	GND CON <b>123.775</b>	CLNL DEL ★ <b>123.775</b>	UNICOM <b>122.95</b>
------------------------	---	---	---------------------------	------------------------------	-------------------------



ELEV 53	<b>D</b>	TDZE 53
---------	----------	---------



CATEGORY	A	B	C	D
S-ILS 32	253-½ 200 (200-½)			
S-LOC 32	420-½ 367 (400-½)			420-¾ 367 (400-¾)
CIRCLING	480-1 427 (500-1)	520-1 467 (500-1)	520-1½ 467 (500-1½)	620-2 567 (600-2)

NE-3, 25 FEB 2021 to 25 MAR 2021

NE-3, 25 FEB 2021 to 25 MAR 2021