

WAAS CH <b>69630</b> <b>W05A</b>	APP CRS <b>050°</b>	Rwy Idg TDZE Apt Elev	<b>5005</b> <b>3427</b> <b>3443</b>
--	------------------------	-----------------------------	---

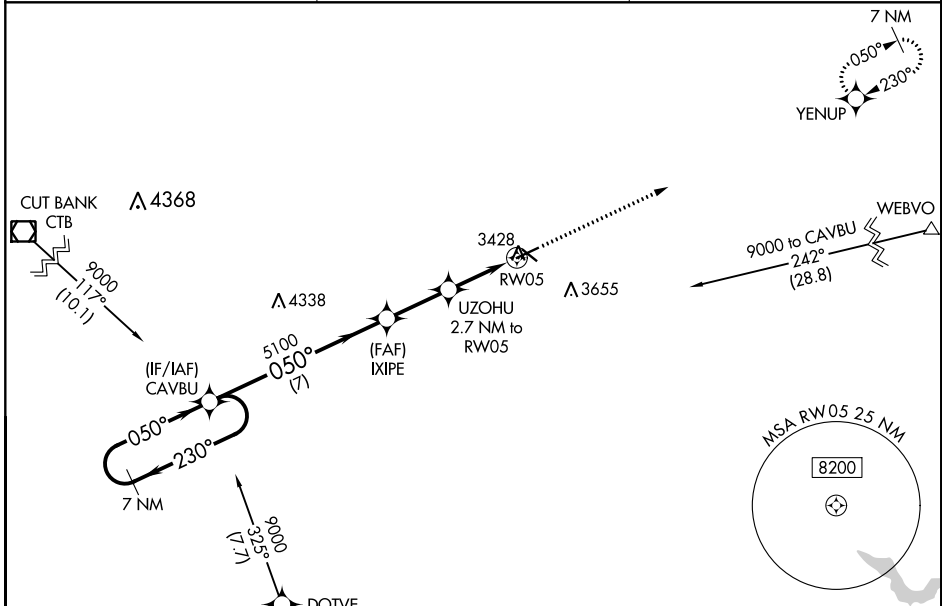
# RNAV (GPS) RWY 5

SHELBY (SBX)

**⚠** Night landing: Rwy 23 NA. Baro-VNAV NA. DME/DME RNP-0.3 NA. Use Cut Bank altimeter setting, if not received use Great Falls altimeter setting and increase all DA 81 feet and all MDA 100 feet; increase LPV all Cats visibility ¼ mile, LNAV/VNAV all Cats visibility ½ mile, LNAV Cats C/D and Circling Cat C/D visibilities ¼ mile.

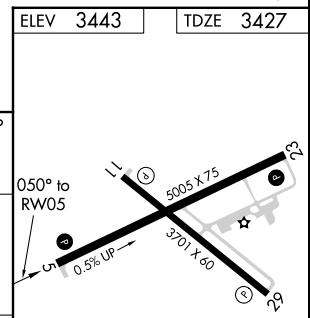
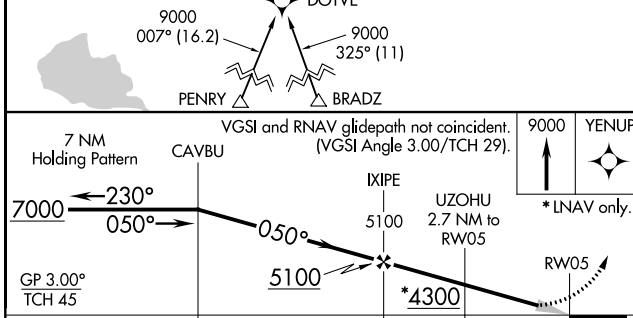
**MISSED APPROACH:** Climb to 9000 direct YENUP and hold, continue climb-in-hold to 9000.

CTB ASOS <b>119.025</b>	SALT LAKE CITY CENTER <b>133.4 285.4</b>	UNICOM <b>122.8 (CTAF) 0</b>
----------------------------	---	---------------------------------



NW-1, 25 FEB 2021 to 25 MAR 2021

NW-1, 25 FEB 2021 to 25 MAR 2021



CATEGORY	A	B	C	D
LPV DA		3733-1	306 (300-1)	
LNAV/VNAV DA		3783-1½	356 (400-1½)	
LNAV MDA	3800-1	373 (400-1)	3800-1½	373 (400-1½)
<b>C</b> CIRCLING	4020-1 577 (600-1)	4080-1 637 (700-1)	4100-1¾ 657 (700-1¾)	4220-2½ 777 (800-2½)

ELEV 3443	TDZE 3427
MRL Rwy 5-23 and 11-29 0	