

WAAS CH 70339 W34A	APP CRS 340°	Rwy Idg TDZE Apt Elev	3400 1107 1107
--	------------------------	-----------------------------	---

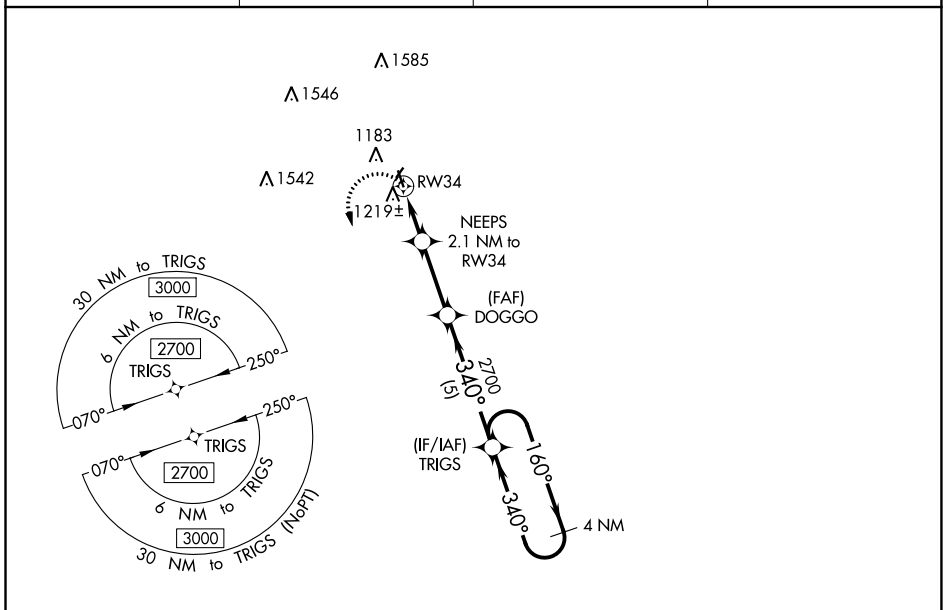
RNAV (GPS) RWY 34

BLUE EARTH MUNI (SBU)

NA Baro-VNAV NA. Use Fairmont altimeter setting; when not received, use Forest City altimeter setting and increase all DA 45 feet and all MDA 60 feet; increase LPV all Cats visibility $\frac{1}{8}$ mile, LNAV/VNAV all Cats, LNAV Cat C and Circling Cat C visibility $\frac{1}{4}$ mile. DME/DME RNP-0.3 NA. Helicopter visibility reduction below 1 SM NA. Circling NA to Rwy's 3 and 21.

MISSED APPROACH: Climbing left turn to 2700 direct TRIGS and hold.

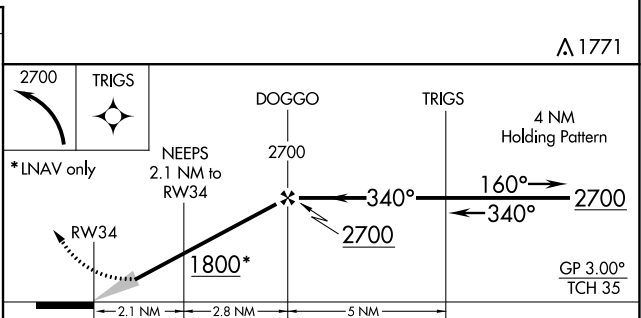
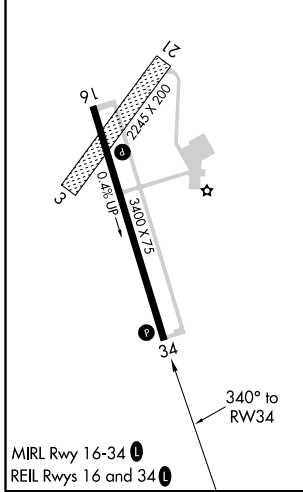
FRM AWOS-3PT 120.025	MINNEAPOLIS CENTER 127.75 257.7	GCO 121.725	UNICOM 122.8 (CTAF) 0
--------------------------------	---	-----------------------	---------------------------------



NC-1, 25 FEB 2021 to 25 MAR 2021

NC-1, 25 FEB 2021 to 25 MAR 2021

ELEV 1107	TDZE 1107
-----------	-----------



CATEGORY	A	B	C	D
LPV DA	1398-1 291 (300-1)			NA
LNAV/VNAV DA	1548-1½ 441 (500-1½)			NA
LNAV MDA	1520-1	413 (500-1)	1520-1½ 413 (500-1½)	NA
C CIRCLING	1560-1	453 (500-1)	1720-1¾ 613 (700-1¾)	NA