

| | | | |
|--------------|-------------|----------|-------------|
| VORTAC GVO | APP CRS | Rwy Idg | 6052 |
| 113.8 | 279° | TDZE | 10 |
| Chan 85 | | Apt Elev | 10 |

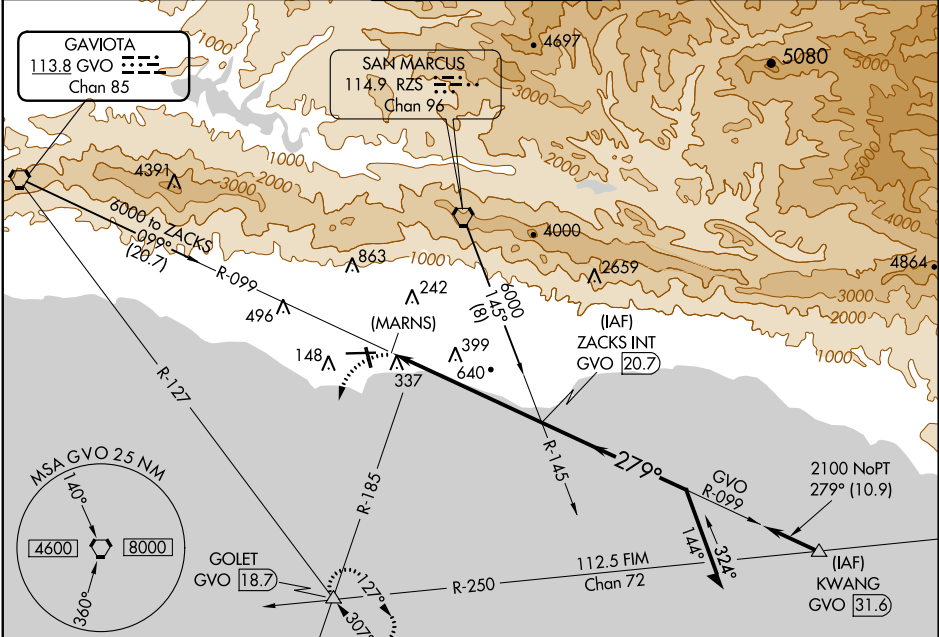
VOR or GPS RWY 25

SANTA BARBARA MUNI (SBA)

⚠ Night landing Rwy 15R NA. Helicopter visibility reduction below 3/4 SM NA. When local altimeter not received, use Oxnard altimeter setting and increase all MDA 100 feet and all Cats B and C visibility 1/4 mile.

MISSED APPROACH: Climbing left turn to 4000 via heading 205° and GVO R-127 to GOLET Int and hold.

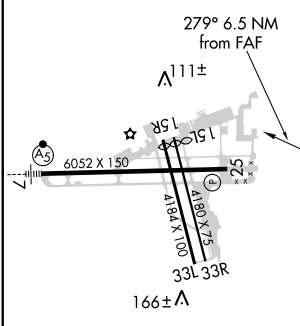
| | | | | | |
|---------------|--|-------------------------------------|--------------|--------------|---------------|
| ATIS | SANTA BARBARA APP CON* | SANTA BARBARA TOWER* | GND CON | CLNC DEL | UNICOM |
| 132.65 | 120.55 319.15 (151°-329°) 125.4 291.1 (330°-150°) | 119.7 (CTAF) 0 254.35 | 121.7 | 132.9 | 122.95 |



SW-3, 25 FEB 2021 to 25 MAR 2021

SW-3, 25 FEB 2021 to 25 MAR 2021

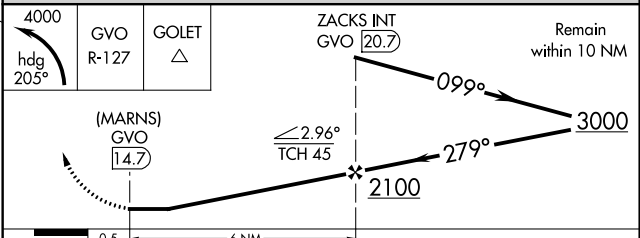
| | | | |
|------|-----------|------|-----------|
| ELEV | 10 | TDZE | 10 |
|------|-----------|------|-----------|



HIRL Rwy 7-25
MIRL Rwy 15R-33L
REL Rwy 15R
REL Rwy 25

FAF to MAP 6 NM

| | | | | | |
|---------|------|------|------|------|------|
| Knots | 60 | 90 | 120 | 150 | 180 |
| Min:Sec | 6:00 | 4:00 | 3:00 | 2:24 | 2:00 |



| CATEGORY | A | B | C | D |
|----------|----------------------------|---|----------------------------|--------------------|
| S-25 | 920-1 1/4 910 (1000-1 1/4) | | 920-2 3/4 910 (1000-2 3/4) | 920-3 910 (1000-3) |
| CIRCLING | 920-1 1/4 910 (1000-1 1/4) | | 920-2 3/4 910 (1000-2 3/4) | 960-3 950 (1000-3) |