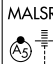


LOC/DME I-SBA 110.3 Chan 40	APP CRS 075°	Rwy Idg 6052 TDZE 13 Apt Elev 13
---	------------------------	---

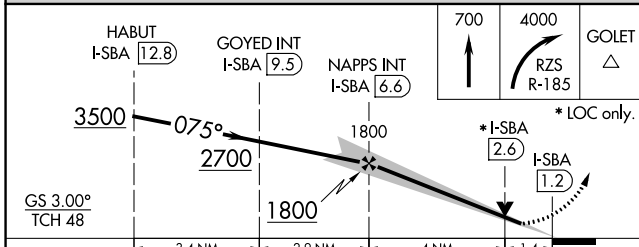
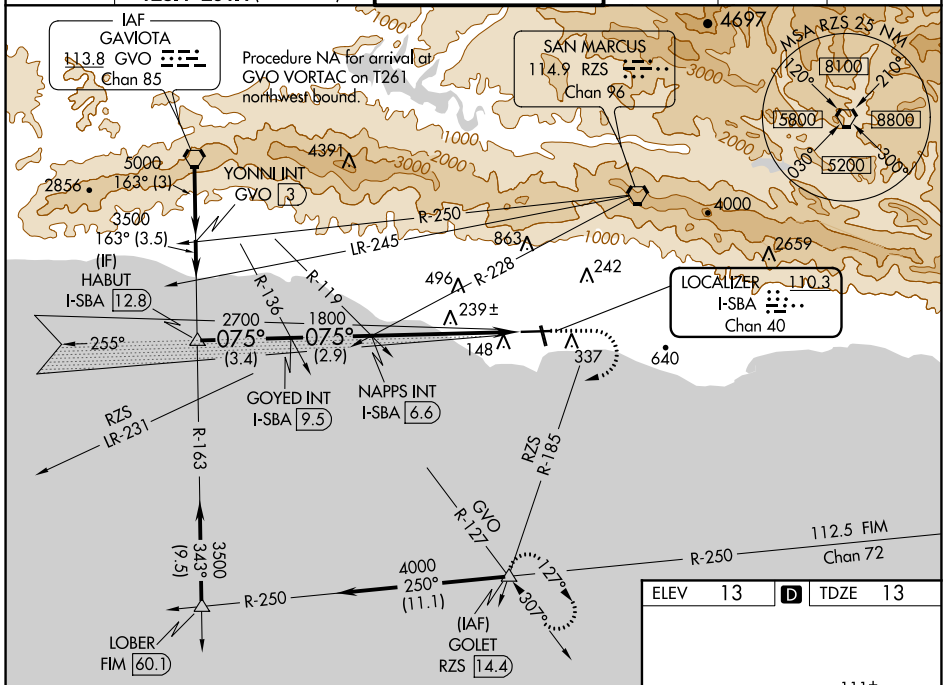
ILS or LOC RWY 7

SANTA BARBARA MUNI (SBA)

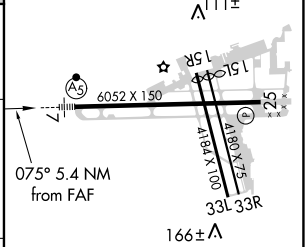
⚠ Circling Rwy 15R NA at night. VDP NA when using Oxnard altimeter setting.
 When local altimeter setting not received, use Oxnard altimeter setting and increase all DA/MDA 100 feet, and S-LOC Cat C visibility to RVR 5000, Cat D visibility to RVR 6000.
 Increase Circling Cat A visibility 1/4 mile, Cat C visibility 1/2 mile. For inop ALS when using Oxnard altimeter setting, increase S-ILS 7 all Cats visibility to RVR 5000.
 # RVR 1800 authorized with use of FD or AP or HUD to DA (NA when using Oxnard altimeter setting).

MALSR

MISSED APPROACH:
 Climb to 700 then climbing right turn to 4000 on RZS VORTAC R-185 to GOLET INT/RZS 1.4.4 DME and hold, continue climb-in-hold to 4000.

ATIS 132.65	SANTA BARBARA APP CON* 120.55 319.15 (151°-329°) 125.4 291.1 (330°-150°)	SANTA BARBARA TOWER* 119.7 (CTAF) 0 254.35	GND CON 121.7	CLNC DEL 132.9	UNICOM 122.95
-----------------------	--	---	-------------------------	--------------------------	-------------------------



ELEV 13	D	TDZE 13
---------	----------	---------



CATEGORY	A	B	C	D
S-ILS 7 #	213/24		200 (200-1/2)	
S-LOC 7	500/24	487 (500-1/2)	500/40 487 (500-3/4)	500/50 487 (500-1)
CIRCLING	800-1 787 (800-1)	800-1 1/4 787 (800-1 1/4)	800-2 1/4 787 (800-2 1/4)	1000-3 987 (1000-3)

HIRL Rwy 7-25	MIRL Rwy 15R-33L Ⓛ
REIL Rwy 15R Ⓛ	REIL Rwy 25
FAF to MAP 5.4 NM	
Knots	60 90 120 150 180
Min:Sec	5:24 3:36 2:42 2:10 1:48

SW-3, 25 FEB 2021 to 25 MAR 2021

SW-3, 25 FEB 2021 to 25 MAR 2021