

WAAS CH 97314 W19A	APP CRS 186°	Rwy Idg TDZE 47 Apt Elev 50	7002
--	------------------------	---	-------------

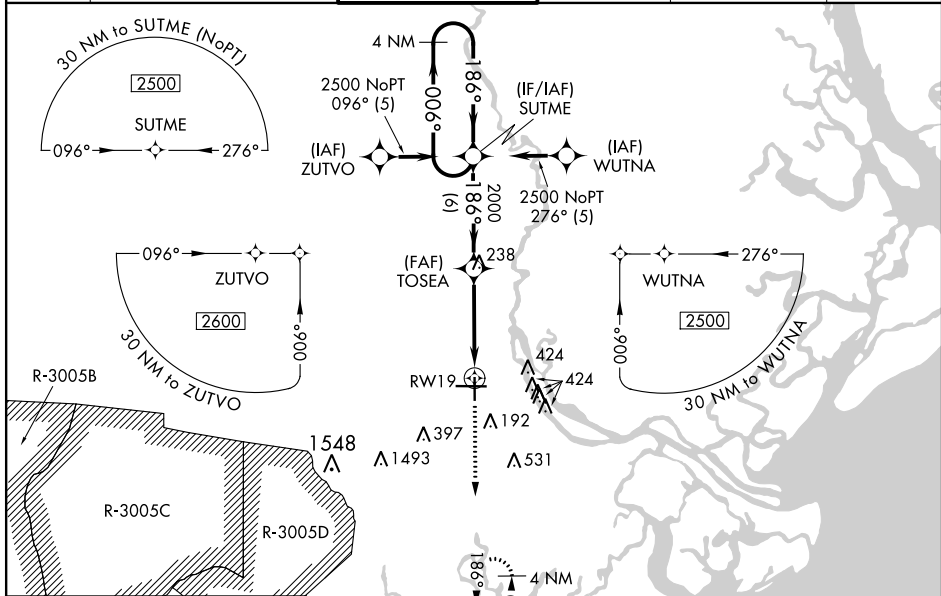
RNAV (GPS) RWY 19

SAVANNAH/HILTON HEAD INTL (SAV)

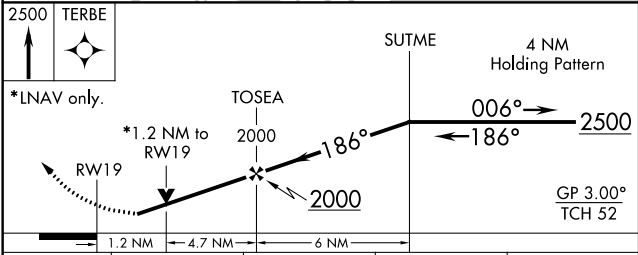
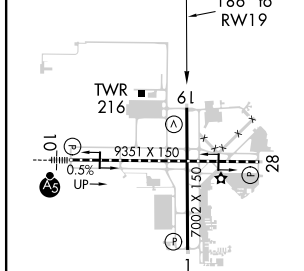
▼ For uncompensated Baro-VNAV systems, LNAV/VNAV NA below 15°C (5°F) or above 49°C (120°F). DME/DME RNP-0.3 NA. Visibility reduction by helicopters NA.
▲ When local altimeter setting not received, use Hilton Head Island altimeter setting and increase all DA 65 feet and all MDA 80 feet; increase LPV all Cats, LNAV/VNAV all Cats, LNAV Cats C/D, and Circling Cats C/D visibility ¼ SM. VDP and Baro-VNAV NA when using Hilton Head Island altimeter setting.

MISSED APPROACH: Climb to 2500 direct TERBE and hold.

ATIS 123.75	SAVANNAH APP CON* 125.3 371.875	SAVANNAH TOWER* 119.1 (CTAF) 0 257.8	GND CON 121.9 348.6	CLNC DEL 119.55 291.775	UNICOM 122.95
-----------------------	---	--	-------------------------------	-----------------------------------	-------------------------



ELEV 50	D	TDZE 47
---------	----------	---------



CATEGORY	A	B	C	D
LPV DA	312-1		265 (300-1)	
LNAV/VNAV DA	466-1½		419 (500-1½)	
LNAV MDA	480-1	433 (500-1)	480-1¼ 433 (500-1¼)	480-1½ 433 (500-1½)
C CIRCLING	520-1	470 (500-1)	740-2 690 (700-2)	740-2¼ 690 (700-2¼)

TDZ/CL Rwy 10
 REIL Rwy 19 and 28
 HIRL Rwy 1-19 and 10-28

SAVANNAH, GEORGIA
 Amdt 2A 10SEP20

32°08'N-81°12'W

SAVANNAH/HILTON HEAD INTL (SAV)

RNAV (GPS) RWY 19

SE-4, 25 FEB 2021 to 25 MAR 2021

SE-4, 25 FEB 2021 to 25 MAR 2021