

WAAS CH 90114 W10A	APP CRS 097°	Rwy Idg TDZE 30 Apt Elev 50	9351
--	------------------------	---	-------------

RNAV (GPS) RWY 10

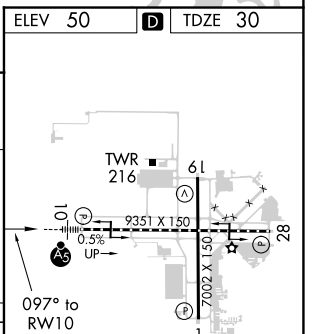
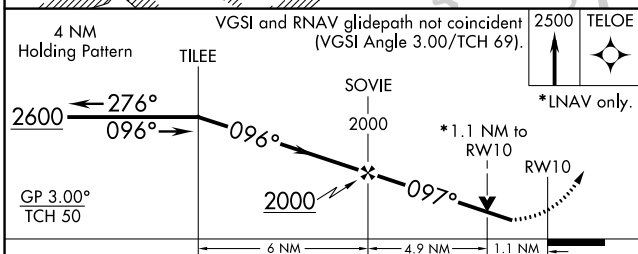
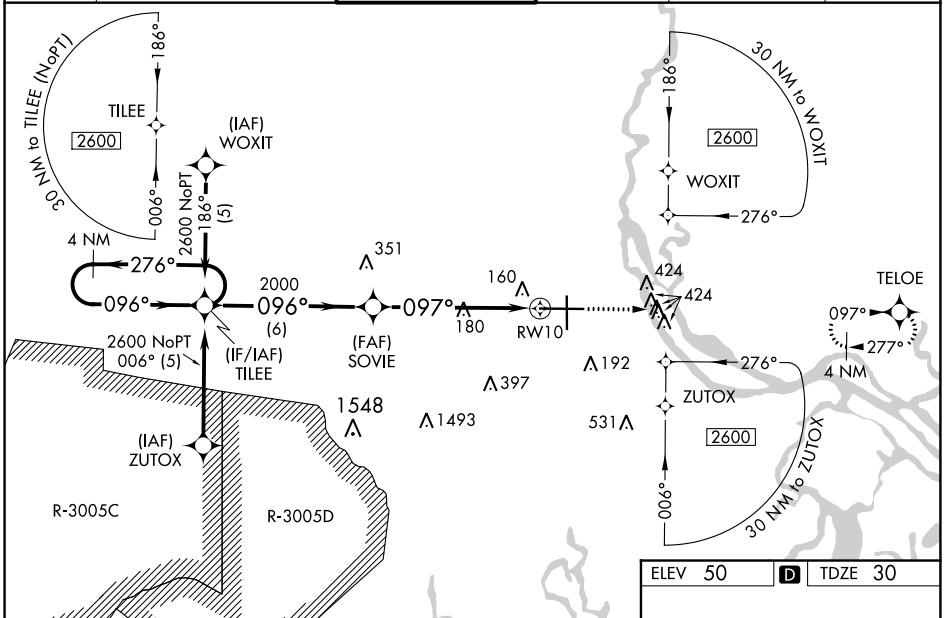
SAVANNAH/HILTON HEAD INTL (SAV)

⚠ For inoperative MALSRS, increase LNAV Cat D visibility to RVR 6000. For uncompensated Baro-VNAV systems, LNAV/VNAV NA below -15°C (5°F) or above 49°C (120°F).
⚠ DME/DME RNP-0.3 NA. When local altimeter setting not received, use Hilton Head Island altimeter setting and increase all DA 65 feet and all MDA 80 feet; increase LNAV/VNAV all Cats and Circling Cats C/D visibility ¼ SM. For inoperative MALSRS when using Hilton Head Island altimeter setting, increase LPV all Cats visibility to RVR 5000.
 VDP and Baro-VNAV NA when using Hilton Head Island altimeter setting. **LPV DA visibility RVR 1800 all Cats, RVR 2000 when using Hilton Head Island, SC altimeter setting.

MALSRS

MISSED APPROACH:
Climb to 2500 direct TELOE and hold.

ATIS 123.75	SAVANNAH APP CON * 125.3 371.875	SAVANNAH TOWER * 119.1 (CTAF) 257.8	GND CON 121.9 348.6	CLNC DEL 119.55 291.775	UNICOM 122.95
-----------------------	--	---	-------------------------------	-----------------------------------	-------------------------



CATEGORY	A	B	C	D
LPV DA **		230/24	200 (200-½)	
LNAV/VNAV DA		504/60	474 (500-1¼)	
LNAV MDA	440/24	410 (400-½)	440/40 410 (400-¾)	440/50 410 (400-1)
C CIRCLING	520-1	470 (500-1)	740-2 690 (700-2)	740-2¼ 690 (700-2¼)

SE-4, 25 FEB 2021 to 25 MAR 2021

SE-4, 25 FEB 2021 to 25 MAR 2021