

WAAS CH 93630 W18A	APP CRS 179°	Rwy Idg 4002 TDZE 538 Apt Elev 538
--	------------------------	---

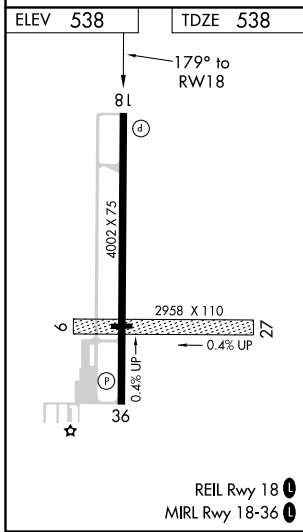
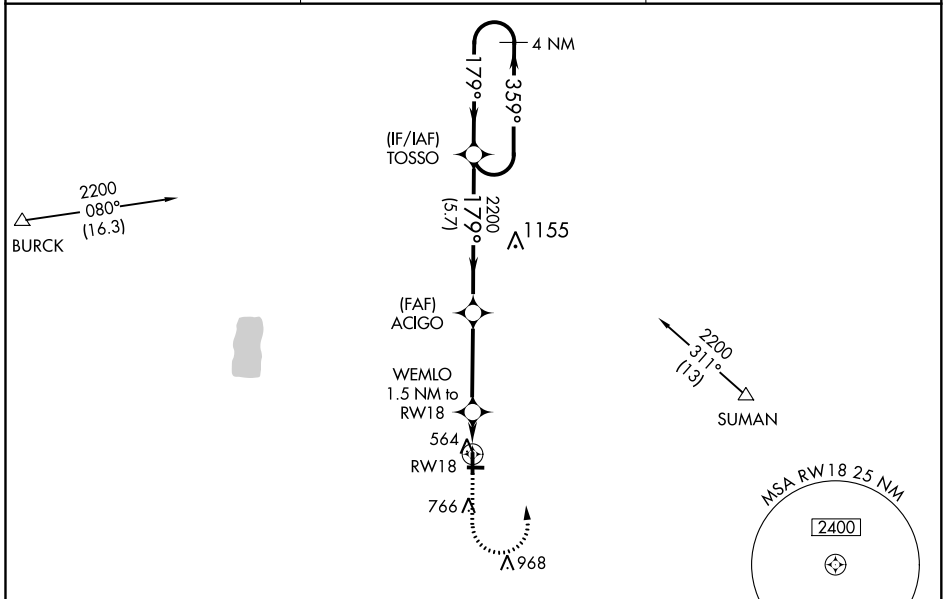
RNAV (GPS) RWY 18

SPARTA COMMUNITY-HUNTER FIELD (S.A.R.)

⚠ NA Baro-VNAV NA when using Scott AFB/Midamerica altimeter setting. For uncompensated Baro-VNAV systems, LNAV/VNAV NA below -16°C (4°F) or above 54°C (130°F). DME/DME RNP-0.3 NA. Helicopter visibility reduction below ¾ SM NA. When local altimeter setting not received, use Scott AFB/Midamerica altimeter setting and increase all DA 68 feet and all MDA 80 feet, increase LNAV and circling Cat C/D visibility ¼ mile. Circling NA to Rwy 9/27.

MISSED APPROACH: Climb to 1200 then climbing left turn to 2200 direct TOSSO and hold.

AWOS-3 118,375	ST. LOUIS APP CON 125.2 281.5	UNICOM 123,075 (CTAF) 0
--------------------------	---	-----------------------------------



Limit missed approach to 250K.

VGSI and RNAV glidepath not coincident (VGSI Angle 3.00/TCH 20).

4 NM Holding Pattern

1200	2200	TOSSO	ACIGO	TOSSO
↑	↶	✦	2200	2200
*LNAV only	WEMLO 1.5 NM to RWY 18		179°	359°
			2200	GP 3.00°
				TCH 55
	1.5 NM	3.6 NM	5.7 NM	
CATEGORY	A	B	C	D
LPV DA		788-1	250 (300-1)	
LNAV/VNAV DA		788-1	250 (300-1)	
LNAV MDA		880-1	342 (400-1)	
CIRCLING	980-1 442 (500-1)	1140-1 602 (700-1)	1140-1¾ 602 (700-1¾)	1140-2 602 (700-2)

EC-3, 25 FEB 2021 to 25 MAR 2021

EC-3, 25 FEB 2021 to 25 MAR 2021