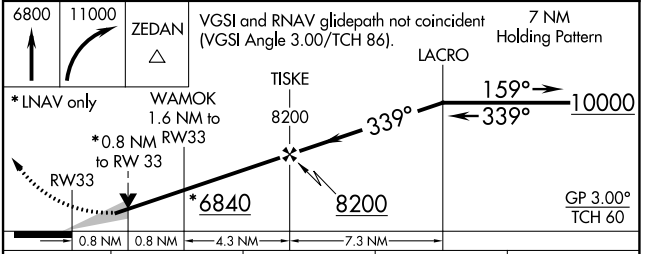
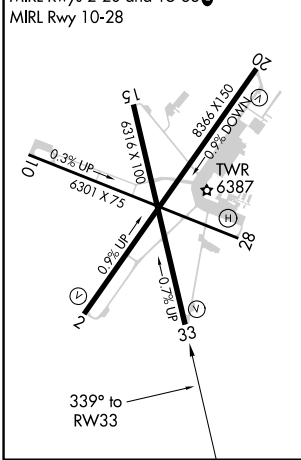
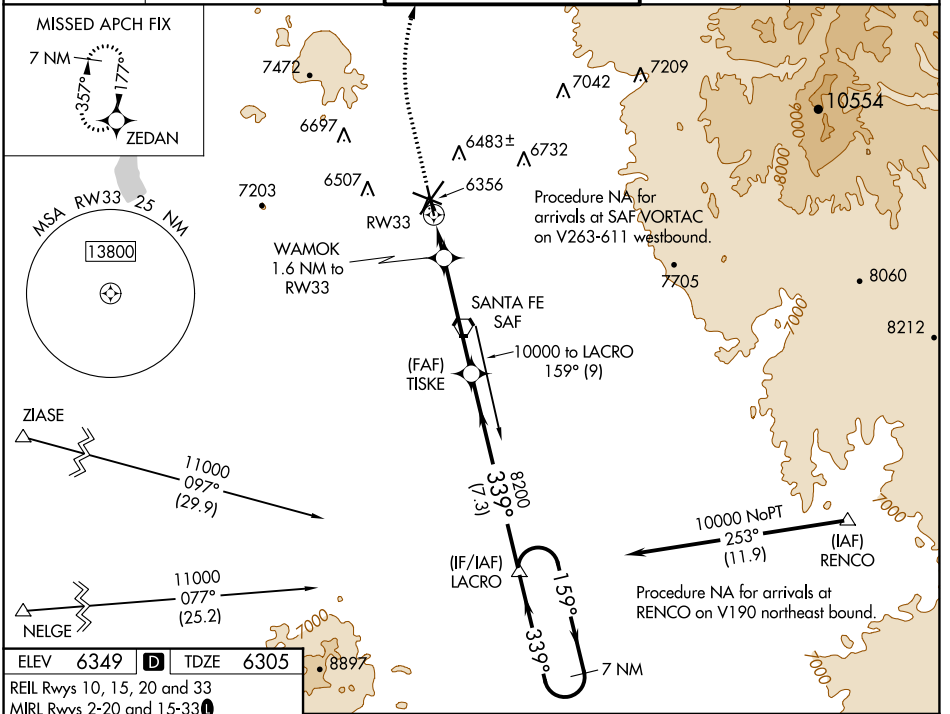


|  |                        |   |
|--|------------------------|---|
| WAAS<br>CH <b>69539</b><br><b>W33A</b> | APP CRS<br><b>339°</b> | Rwy Ldg<br>TDZE <b>6316</b><br>6305<br>Apt Elev <b>6349</b> |
|--|------------------------|---|

# RNAV (GPS) RWY 33

SANTA FE MUNI (SAF)

|  |   |  |                         |
|--|---|--|-------------------------|
| <p><b>⚠</b> For uncompensated Baro-VNAV systems, LNAV/VNAV NA below -18°C (0°F) or above 43°C (110°F).<br/>DME/DME RNP-0.3 NA.</p> |   | <p>MISSED APPROACH: Climb to 6800 then climbing right turn to 11000 direct ZEDAN and hold.</p> |                         |
| ATIS<br><b>128.55</b>  | ALBUQUERQUE CENTER<br><b>132.8 346.35</b> | SANTA FE TOWER *<br><b>119.5 (CTAF) 239.3</b>  | GND CON<br><b>121.7</b> |
|  |   | UNICOM<br><b>122.95</b>  |                         |



| CATEGORY          | A                     | B                     | C                      | D                       |
|-------------------|-----------------------|-----------------------|------------------------|-------------------------|
| LPV DA            |                       | 6555-78               | 250 (300-78)           |                         |
| LNAV/VNAV DA      |                       | 6555-78               | 250 (300-78)           |                         |
| LNAV MDA          | 6620-1                | 315 (300-1)           | 6620-78                | 315 (300-78)            |
| <b>C</b> CIRCLING | 6800-1<br>451 (500-1) | 6920-1<br>571 (600-1) | 7340-3<br>991 (1000-3) | 7660-3<br>1311 (1400-3) |

SW-1, 25 FEB 2021 to 25 MAR 2021

SW-1, 25 FEB 2021 to 25 MAR 2021