

WAAS CH 78316 W30A	APP CRS 303°	Rwy Idg TDZE Apt Elev	6006 3169 3179
--	------------------------	-----------------------------	---

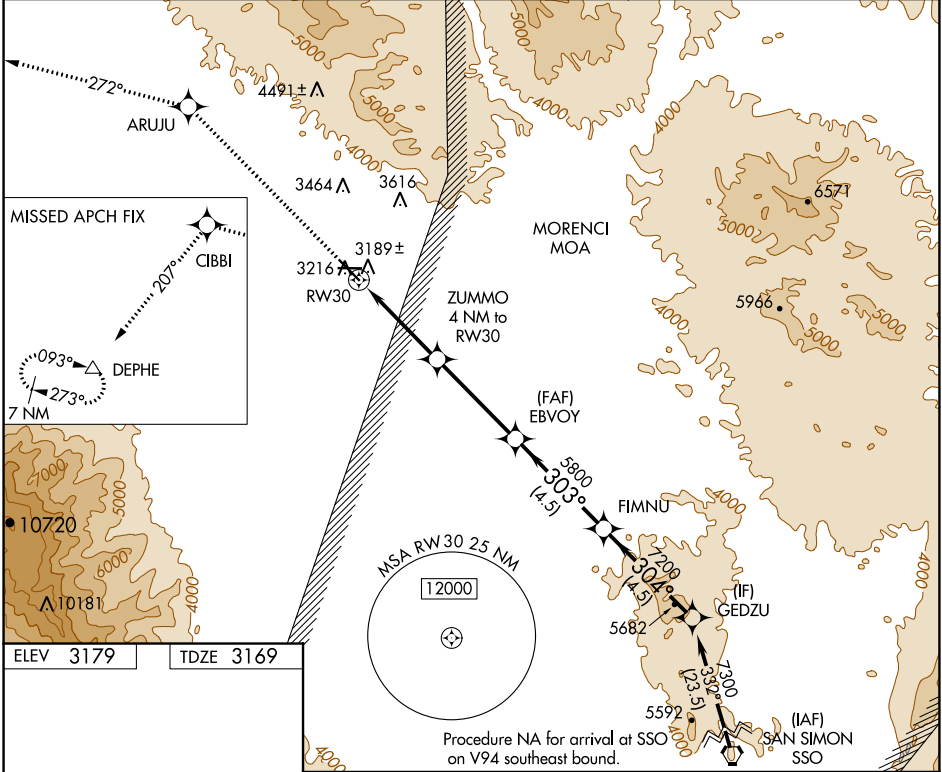
RNAV (GPS) RWY 30

SAFFORD RGNL (SAD)

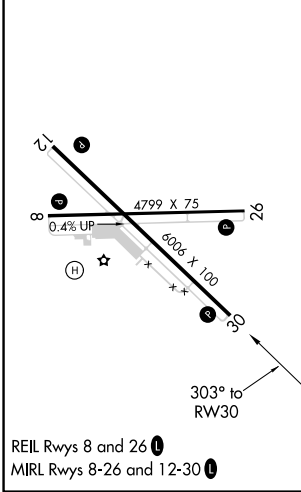
⚠ For uncompensated Baro-VNAV systems, LNAV/VNAV NA below -21°C (-5°F) or above 54°C (130°F).
⚠ DME/DME RNP-0.3 NA. Night landing: Rwy 8 NA.

MISSED APPROACH: Climb to 10000 direct ARUJU and on track 272° to CIBBI and on track 207° to DEPHE and hold.

ASOS 124.175	ALBUQUERQUE CENTER 134.45 327.15	UNICOM 122.8 (CTAF) 0
------------------------	--	---------------------------------



ELEV 3179	TDZE 3169
-----------	-----------



10000	ARUJU	CIBBI	DEPHE	GEDZU
↑	tr 272°	tr 207°	△	
* LNAV only				
	ZUMMO	EBVOY	FIMNU	GEDZU
	4 NM to RW30	5800	7200	7300
	* 2.1 NM to RW30	4480*	5800	Procedure Turn NA
				GP 3.00°
				TCH 36
	2.1 NM	1.9 NM	4 NM	4.5 NM
				4.5 NM

CATEGORY	A	B	C	D
LPV DA	3419-1	250 (300-1)		NA
LNAV/VNAV DA	3854-2½	685 (700-2½)		NA
LNAV MDA	3860-1	691 (700-1)		NA
CIRCLING	3860-1	681 (700-1)		NA

SW-4, 25 FEB 2021 to 25 MAR 2021

SW-4, 25 FEB 2021 to 25 MAR 2021