

WAAS CH 69516 W12A	APP CRS 123°	Rwy Idg TDZE Apt Elev	6006 3167 3179
--	------------------------	-----------------------------	---

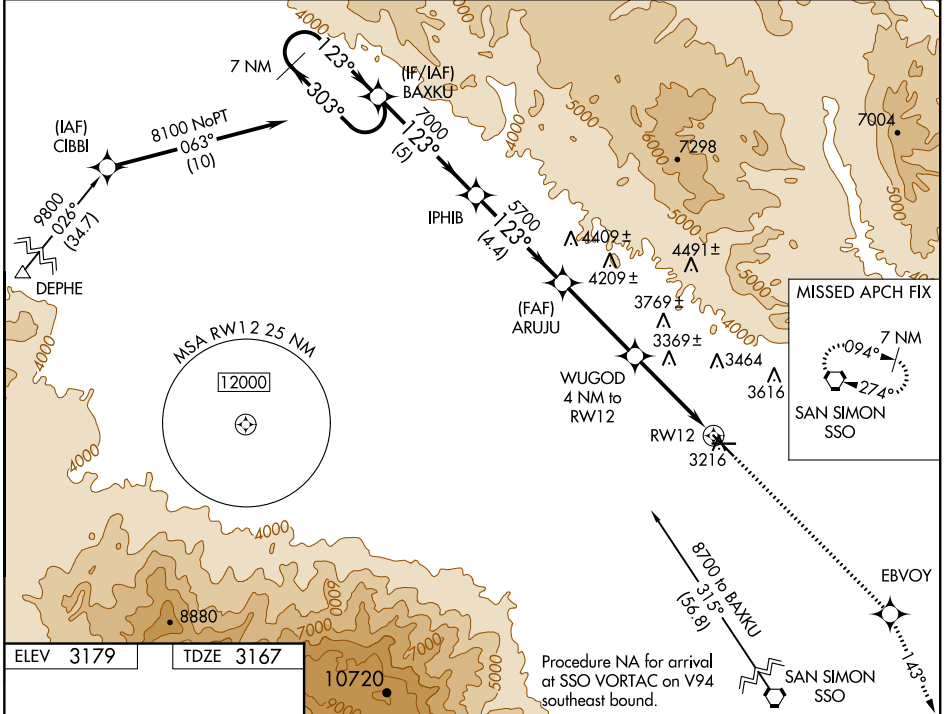
RNAV (GPS) RWY 12

SAFFORD RGNL (SAD)

▽ For uncompensated Baro-VNAV systems, LNAV/VNAV NA below -21°C (-5°F) or above 54°C (130°F). DME/DME RNP-0.3 NA.
▲ Night landing: Rwy 8 NA.

MISSED APPROACH: Climb to 10000 direct EBVOY and on track 143° to SSO VORTAC and hold.

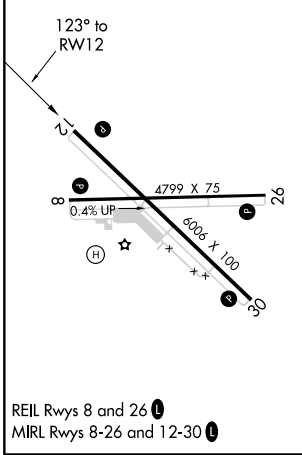
ASOS 124.175	ALBUQUERQUE CENTER 134.45 327.15	UNICOM 122.8 (CTAF) 0
------------------------	--	---------------------------------



SW-4, 25 FEB 2021 to 25 MAR 2021

SW-4, 25 FEB 2021 to 25 MAR 2021

ELEV 3179	TDZE 3167
-----------	-----------



7 NM Holding Pattern	BAXKU	IPHIB	ARUJU	WUGOD	SSO
8100 ← 303°	→ 123°	→ 123°	→ 143°	→ 143°	
GP 3.00° TCH 38		5700	*4480		
	5 NM	4.4 NM	3.7 NM	2.4 NM	1.6 NM
CATEGORY	A	B	C	D	
LPV DA	3417-1	250 (300-1)			NA
LNAV/VNAV DA	3635-1¾	468 (500-1¾)			NA
LNAV MDA	3700-1	533 (600-1)			NA
CIRCLING	3740-1	561 (600-1)			NA

REIL Rwy 8 and 26
MIRL Rwy 8-26 and 12-30

32°51'N-109°38'W

SAFFORD RGNL (SAD)
RNAV (GPS) RWY 12