

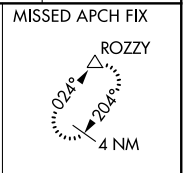
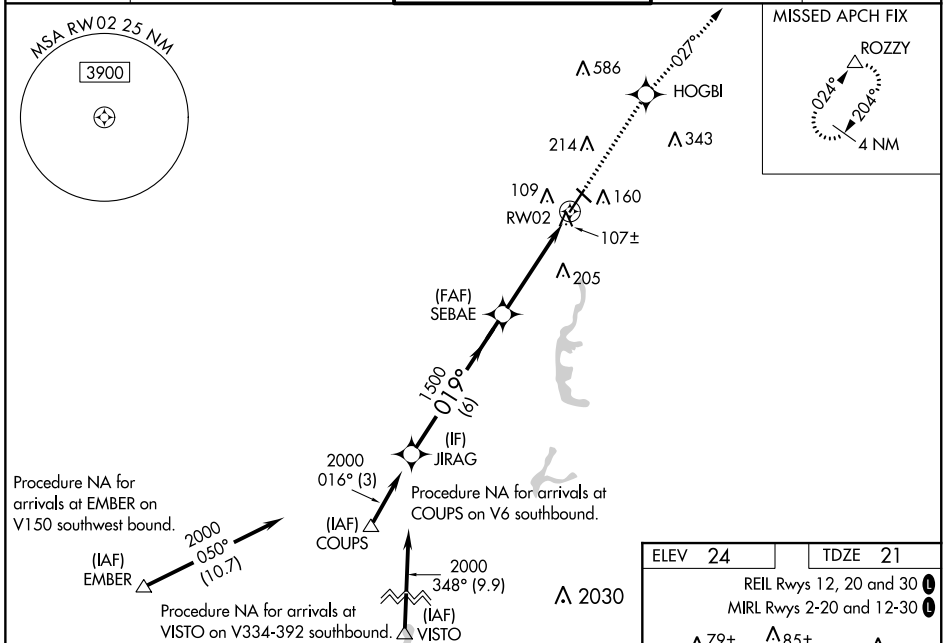
WAAS CH <b>62810</b> <b>W02A</b>	APP CRS <b>019°</b>	Rwy Idg TDZE Apt Elev	<b>5503</b> <b>21</b> <b>24</b>
--	------------------------	-----------------------------	---------------------------------------

# RNAV (GPS) RWY 2

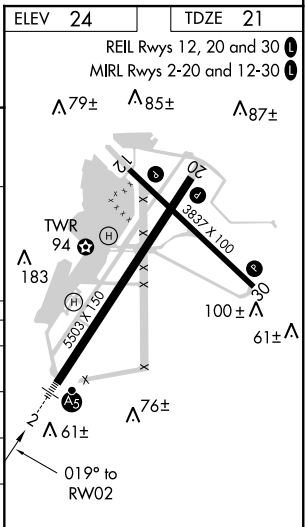
SACRAMENTO EXECUTIVE (SAC)

<p><b>⚠</b> Baro-VNAV NA when using Sacramento Intl altimeter setting. For uncompensated Baro-VNAV systems, LNAV/VNAV NA below -1.5°C (5°F) or above 54°C (130°F). DME/DME RNP-0.3 NA. When local altimeter setting not received, use Sacramento Intl altimeter setting and increase LPV DA to 322; increase LNAV/VNAV DA to 401 and all visibilities 1/8 mile; increase all MDA 40 feet and LNAV Cats C/D visibility 1/8 mile. For inop MALSR, increase LPV all Cats visibility to 1.</p>	<p><b>MALSR</b></p>	<p><b>MISSED APPROACH:</b> Climb to 3000 direct HOGBI and on track 027° to ROZZY and hold.</p>
--	---------------------	--

ATIS <b>125.5</b>	NORCAL APP CON <b>125.25 257.9</b>	EXEC TOWER * <b>119.5 (CTAF) 0 278.8</b>	GND CON <b>125.0</b>	UNICOM <b>122.95</b>
----------------------	---------------------------------------	---	-------------------------	-------------------------



JIRAG	SEBAE	HOGBI	ROZZY
2000	1500	3000	027° tr
GP 3.00° TCH 57	1500		
6 NM	4.4 NM		
CATEGORY	A	B	C
LPV DA		294-1/2	273 (300-1/2)
LNAV/VNAV DA		373-5/8	352 (400-5/8)
LNAV MDA	440-1/2	419 (500-1/2)	440-3/4
CIRCLING	500-1 476 (500-1)	520-1 496 (500-1)	520-1 1/2 496 (500-1 1/2)



SW-2, 25 FEB 2021 to 25 MAR 2021

SW-2, 25 FEB 2021 to 25 MAR 2021