

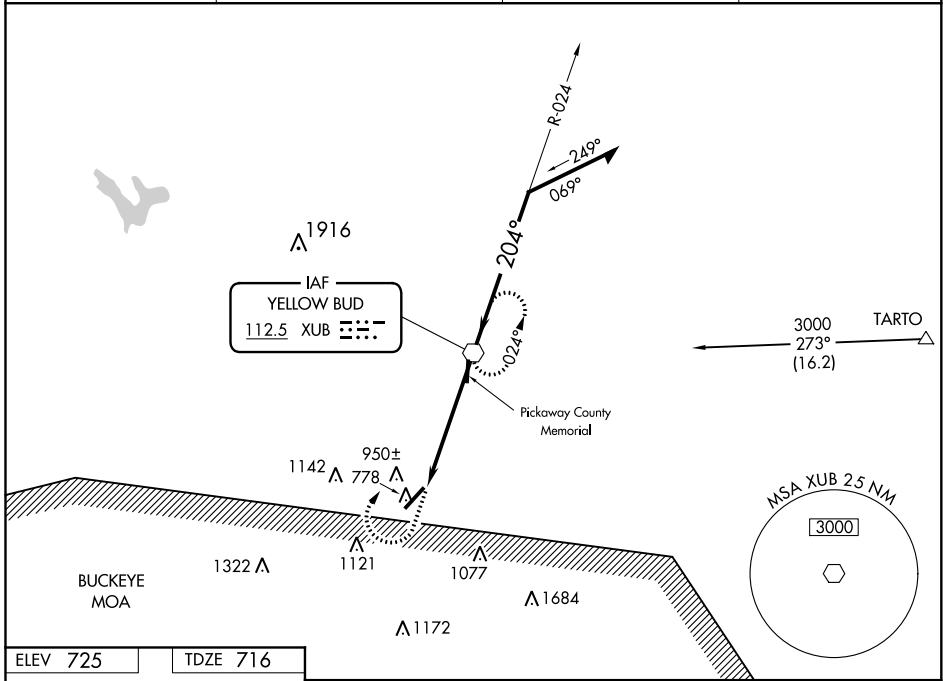
VOR XUB <b>112.5</b>	APP CRS <b>204°</b>	Rwy Idg TDZE Apt Elev	<b>5405</b> <b>716</b> <b>725</b>
-------------------------	------------------------	-----------------------------	---

**VOR RWY 23**  
ROSS COUNTY (R/ZT)

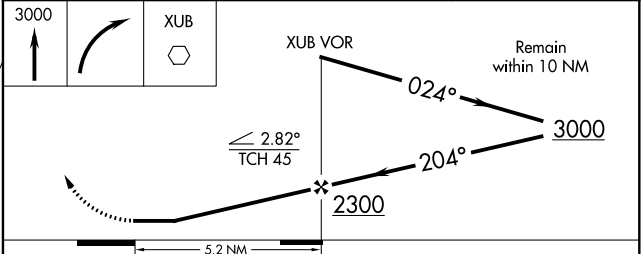
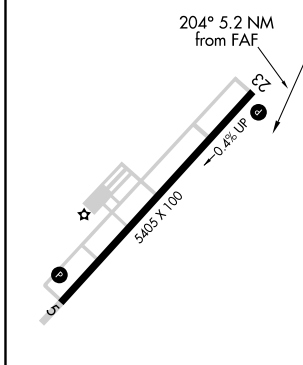
**NA** When local altimeter setting not received, use Rickenbacker Intl altimeter setting. When VGSI is inop, Straight-in and Circling Rwy 23 procedures NA at night.

**MISSED APPROACH:** Climb to 3000 then right turn direct XUB VOR and hold.

AWOS-3 <b>119.225</b>	COLUMBUS APP CON <b>134.0 279.6</b>	UNICOM <b>122.8</b> (CTAF)	<b>123.0</b> <b>0</b>
--------------------------	--	-------------------------------	-----------------------



ELEV 725	TDZE 716
----------	----------



CATEGORY	A		B		C		D	
	S-23	1220-1	504 (500-1)	1220-1½	504 (500-1½)			
CIRCLING	1340-1 615 (700-1)	1360-1 635 (700-1)	1380-1¾ 655 (700-1¾)	1400-2¼ 675 (700-2¼)				
RICKENBACKER INTL ALTIMETER SETTING MINIMUMS								
S-23	1280-1	564 (600-1)	1280-1½	564 (600-1½)				
CIRCLING	1400-1 675 (700-1)	1420-1 695 (700-1)	1440-2 715 (800-2)	1460-2¼ 735 (800-2¼)				

FAF to MAP 5.2 NM					
Knots	60	90	120	150	180
Min:Sec	5:12	3:28	2:36	2:05	1:44

EC-2, 25 FEB 2021 to 25 MAR 2021

EC-2, 25 FEB 2021 to 25 MAR 2021