

APP CRS	Rwy Idg	<b>3900</b>
<b>046°</b>	TDZE	<b>989</b>
	Apt Elev	<b>989</b>

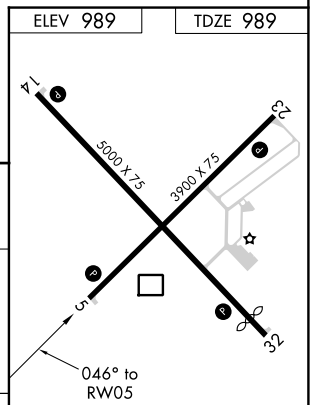
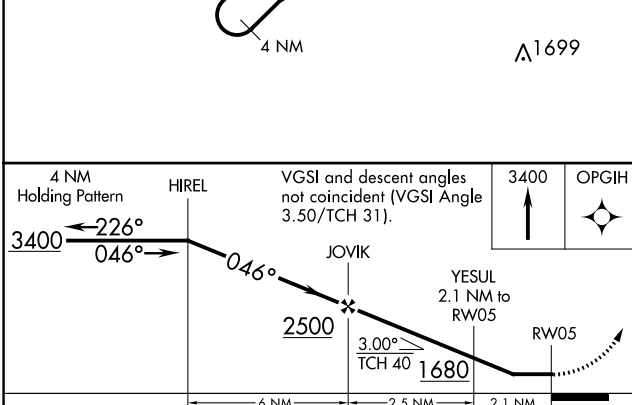
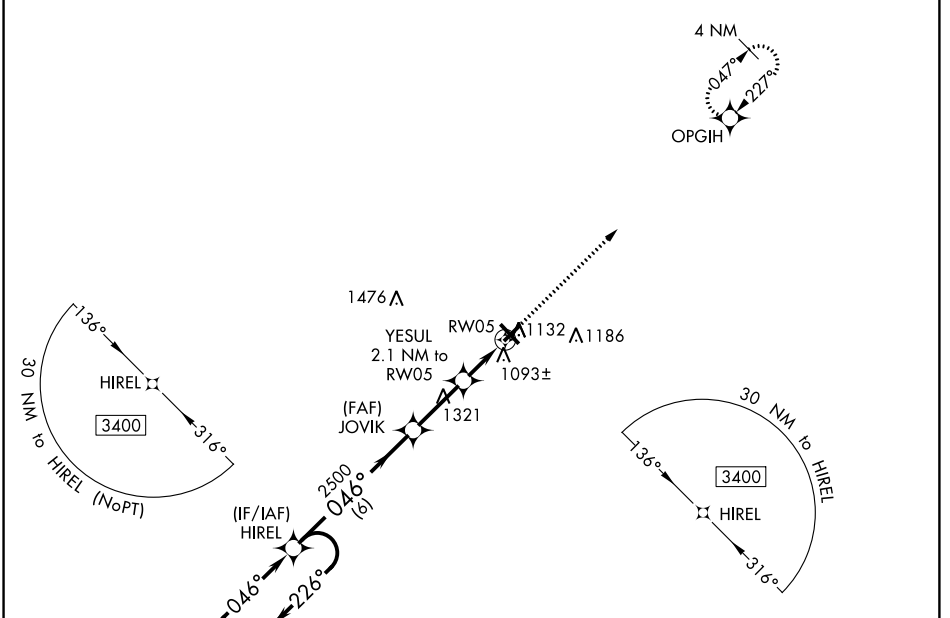
# RNAV (GPS) RWY 5

BURNETT COUNTY (RZN)

**⚠** DME/DME RNP-0.3 NA. Helicopter visibility reduction below 1 SM NA.  
**⚠** Night Landing: Rwy 5, 23, 32 NA. When local altimeter setting not received, use Rush City, MN altimeter setting and increase all MDA 80 feet; increase LNAV Cat C/D visibility 3/8 mile, and Circling Cat C/D visibility 1/4 mile.

MISSED APPROACH: Climb to 3400 direct OPGIH and hold.

AWOS-3 <b>118.325</b>	MINNEAPOLIS CENTER <b>121.05 397.9</b>	UNICOM <b>122.8 (CTAF)</b> <b>📻</b>
--------------------------	---	--



CATEGORY	A	B	C	D
LNAV MDA	1360-1 371 (400-1)			
<b>📻</b> CIRCLING	1440-1 451 (500-1)	1540-1½ 551 (600-1½)	1680-2¼ 691 (700-2¼)	

REIL Rws 5, 14, 23 and 32 **📻**  
 MRL Rws 5-23 and 14-32 **📻**

EC-3, 25 FEB 2021 to 25 MAR 2021

EC-3, 25 FEB 2021 to 25 MAR 2021