

APP CRS 326°	Rwy Idg 3010
	TDZE 390
	Apt Elev 391

RNAV (GPS) RWY 33

CALDWELL MUNI (RWV)

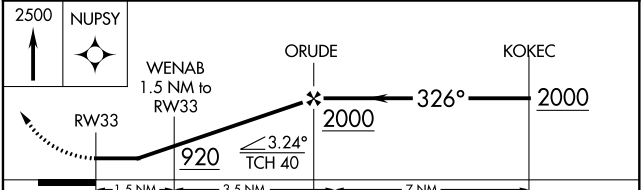
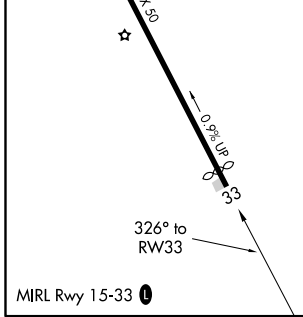
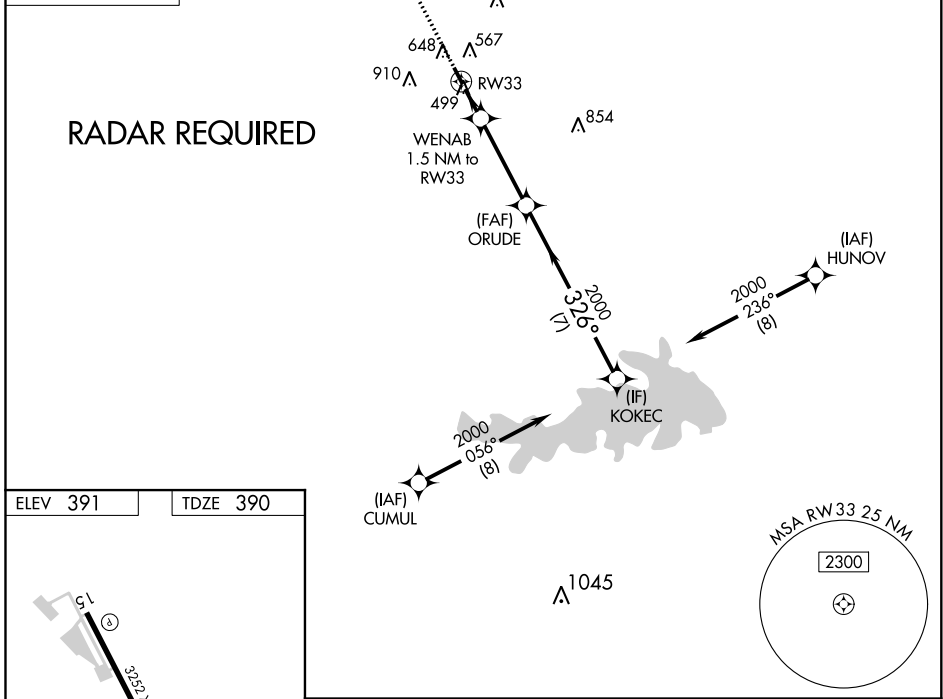
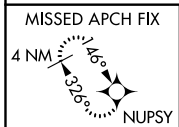
⚠ When local altimeter setting not received, use College Station altimeter setting and increase all MDA 60 feet. Circling NA east of Rwy 15-33. DME/DME RNP-0.3 NA. Procedure NA at night. Rwy 33 helicopter visibility reduction below 1 SM NA.

MISSED APPROACH: Climb to 2500 direct NUPSY and hold.

AWOS-3
118.35

HOUSTON APP CON
134.3 360.85

CTAF
122.9



CATEGORY	A	B	C	D
LNAV MDA	760-1	370 (400-1)	NA	
CIRCLING	1000-1	609 (700-1)	NA	

SC-5, 25 FEB 2021 to 25 MAR 2021

SC-5, 25 FEB 2021 to 25 MAR 2021