

APP CRS	Rwy Idg	3252
146°	TDZE	391
	Apt Elev	391

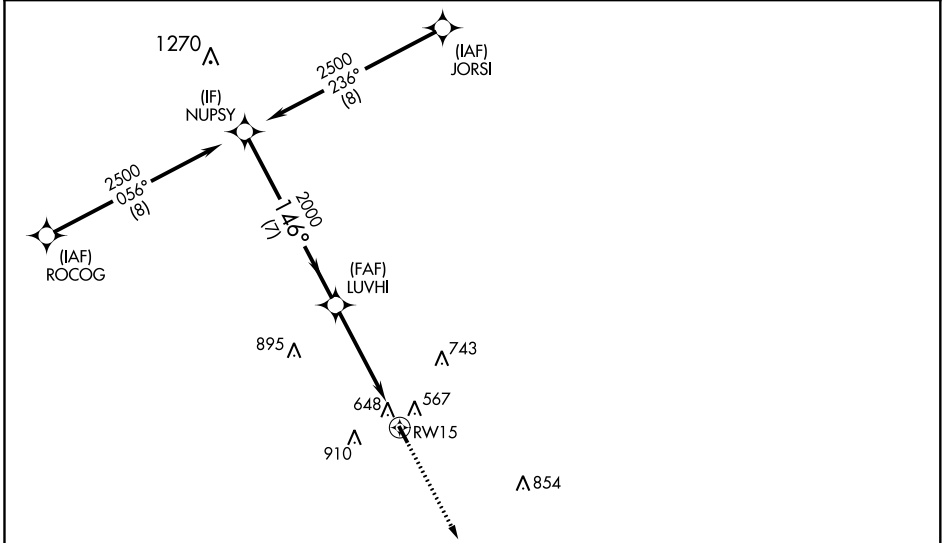
RNAV (GPS) RWY 15

CALDWELL MUNI (RWV)

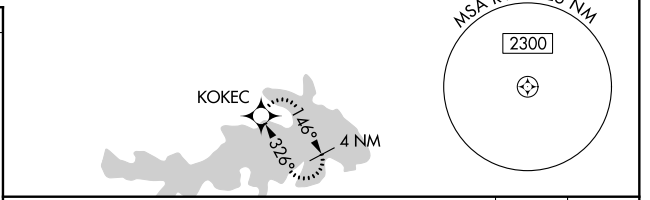
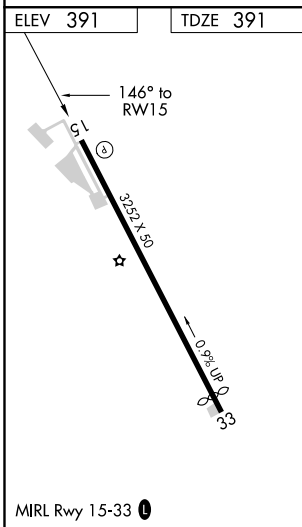
⚠ When local altimeter setting not received, use College Station altimeter setting and increase all MDA 60 feet. Circling NA east of Rwy 15-33.
⚠ DME/DME RNP-0.3 NA. Procedure NA at night. Helicopter visibility reduction below 1 SM NA.

MISSED APPROACH: Climb to 2000 direct KOKEC and hold.

AWOS-3 118,35	HOUSTON APP CON 134.3 360,85	CTAF 122.9 ①
-------------------------	--	-------------------------------



RADAR REQUIRED



	2500	2000	2000	KOKEC
		146°		
			3.00°	
			TCH 36	
	7 NM		4.9 NM	
CATEGORY	A	B	C	D
LNAV MDA	960-1	569 (600-1)	NA	
CIRCLING	1000-1	609 (700-1)	NA	