

WAAS CH 78107 W24A	APP CRS 239°	Rwy Idg TDZE Apt Elev	5001 818 819
--	------------------------	-----------------------------	---

RNAV (GPS) RWY 24

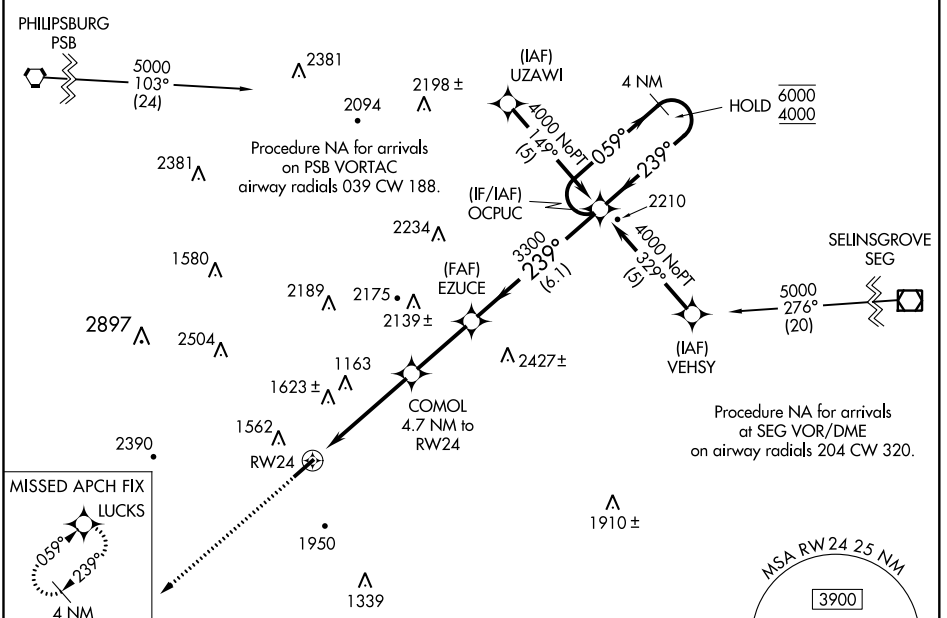
MIFFLIN COUNTY (R.V.L.)

RNP APCH.

VDP NA when using State College altimeter setting. Rwy 24 helicopter visibility reduction below 3/4 SM NA. Circling NA NW of Rwy 6-24. When local altimeter setting not received, use State College altimeter setting and increase LPV DA to 1602 feet and all MDAs 100 feet; increase LPV visibility all Cats to 2 1/2 SM.

MISSED APPROACH:
Climb to 4000 direct
LUCKS and hold.

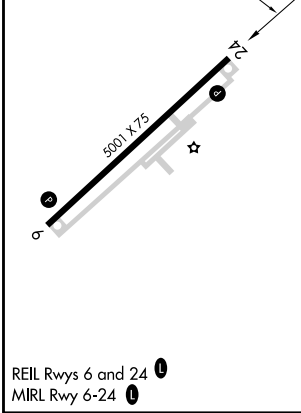
AWOS-3PT 123.85	NEW YORK CENTER 134.8 338.3	UNICOM 122.7 (CTAF) 0
---------------------------	---------------------------------------	---------------------------------



NE-4, 25 FEB 2021 to 25 MAR 2021

NE-4, 25 FEB 2021 to 25 MAR 2021

ELEV 819	TDZE 818
----------	----------



CATEGORY	A	B	C	D
	1509-2 691 (700-2)			1509-2 1/4 691 (700-2 1/4)
LPV DA	1509-2 691 (700-2)			1509-2 1/4 691 (700-2 1/4)
LNAV MDA	2220-1 1/4 1402 (1500-1 1/4)	2220-1 1/2 1402 (1500-1 1/2)	2220-3 1402 (1500-3)	2360-3 1541 (1600-3)
CIRCLING	2220-1 1/4 1401 (1500-1 1/4)	2220-1 1/2 1401 (1500-1 1/2)	2220-3 1401 (1500-3)	2360-3 1541 (1600-3)