

WAAS CH <b>40321</b> <b>W02A</b>	APP CRS <b>022°</b>	Rwy Idg TDZE Apt Elev	<b>5375</b> <b>772</b> <b>772</b>
--	------------------------	-----------------------------	---

# RNAV (GPS) RWY 2

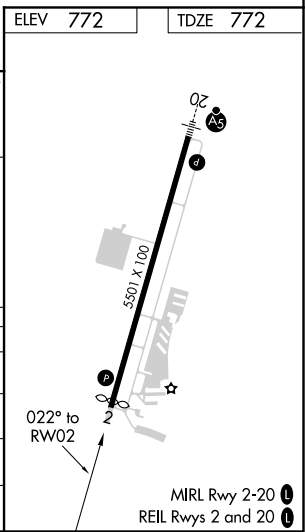
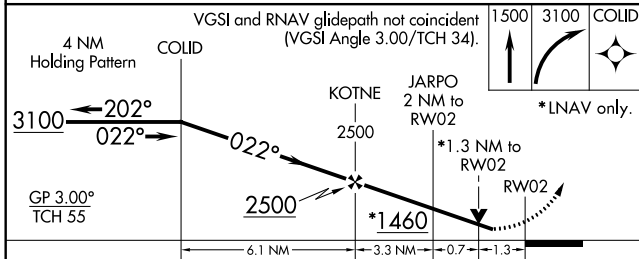
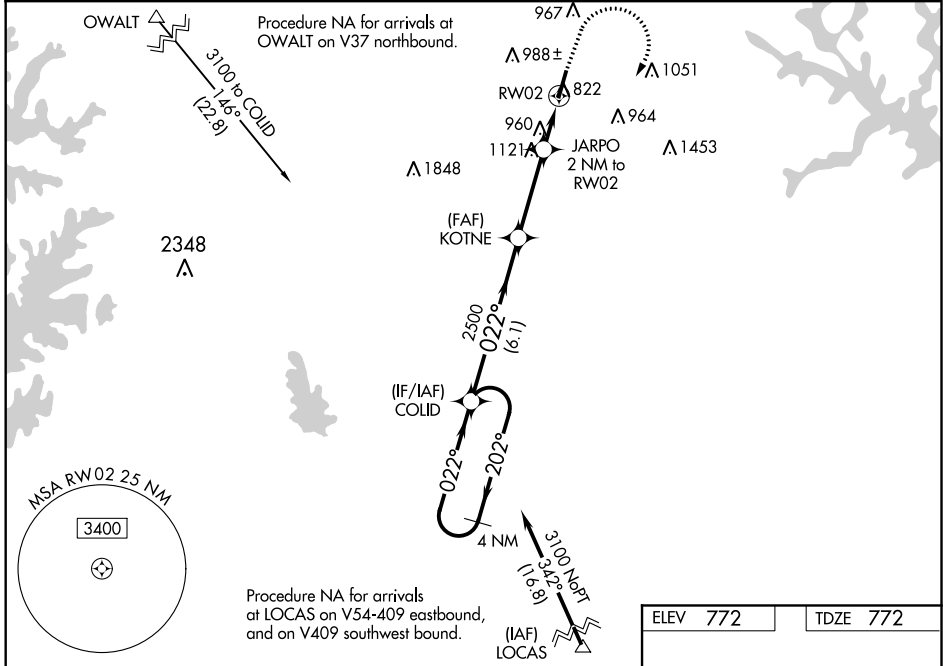
MID-CAROLINA RGNL (RUQ)

RNP APCH.

▼ For uncompensated Baro-VNAV systems, LNAV/VNAV NA below -16°C or above 54°C. Rwy 2 helicopter visibility reduction below 3/4 SM NA.

MISSED APPROACH: Climb to 1500 then climbing right turn to 3100 direct COLID and hold.

AWOS-3 <b>118.175</b>	CHARLOTTE APP CON <b>128.325 307.8</b>	CLNC DEL <b>127.35</b>	UNICOM <b>122.725 (CTAF)</b>
--------------------------	---	---------------------------	---------------------------------



CATEGORY	A	B	C	D
LPV DA	1138-1 366 (400-1)			
LNAV/VNAV DA	1181-1 1/8 409 (500-1 1/8)			
LNAV MDA	1220-1 448 (500-1)	1220-1 3/8 448 (500-1 3/8)		448 (500-1 3/8)
<b>C</b> CIRCLING	1220-1 448 (500-1)	1260-1 488 (500-1)	1440-1 3/4 668 (700-1 3/4)	1440-2 668 (700-2)

SE-2, 25 FEB 2021 to 25 MAR 2021

SE-2, 25 FEB 2021 to 25 MAR 2021