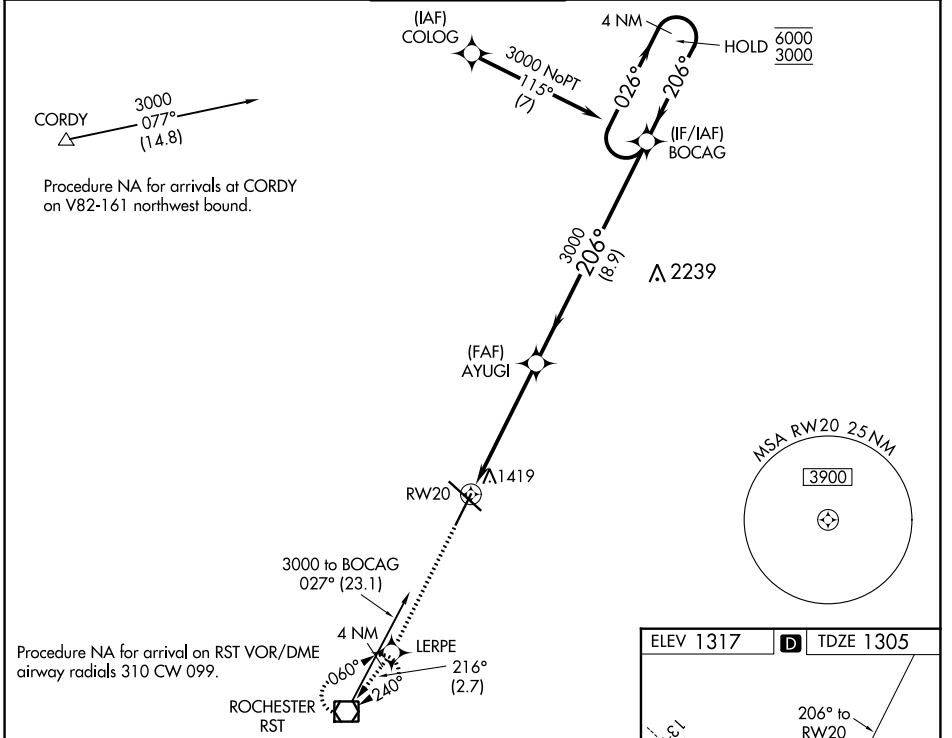


WAAS CH 57922 W20A	APP CRS 206°	Rwy Idg 7300 TDZE 1305 Apt Elev 1317
----------------------------------------	------------------------	-----------------------------------------------------------------

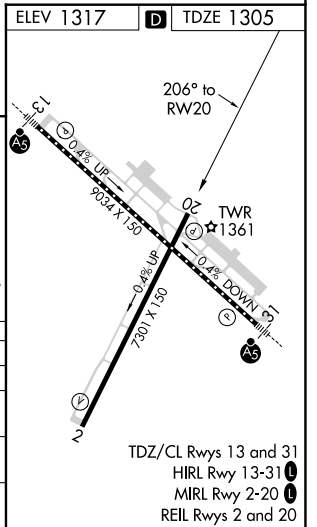
RNAV (GPS) RWY 20

ROCHESTER INTL (RST)

RNP APCH.		MISSED APPROACH: Climb to 3000 direct LERPE and on track 216° to RST VOR/DME and hold.	
⚠ For uncompensated Baro-VNAV systems, LNAV/VNAV ASR NA below -28°C or above 54°C.			
ATIS 120.5	ROCHESTER APP CON ★ 119.8 251.125	ROCHESTER TOWER ★ 118.3 (CTAF) 0 257.8	GND CON 121.9
		UNICOM 122.95	



3000	LERPE	tr 216°	RST	AYUGI	BOCAG	4 NM Holding Pattern
*LNAV only.	*1.1 NM to RW20			3000		6000 3000
						GP 3.00° TCH 50
	1.1 NM	4.1 NM	8.9 NM			
CATEGORY	A	B	C	D		
LPV DA		1555-1	250 (300-1)			
LNAV/VNAV DA		1603-1	298 (300-1)			
LNAV MDA		1680-1	375 (400-1)			
CIRCLING	1720-1	1780-1	1900-1½	1900-2		
	403 (500-1)	463 (500-1)	583 (600-1½)	583 (600-2)		



NC-1, 25 FEB 2021 to 25 MAR 2021

NC-1, 25 FEB 2021 to 25 MAR 2021